

*Nelson . Weiss Inc.*

## HOLLY GRACE NELSON

*Landscape Architect*

### EDUCATION

#### Degrees

Rutgers University, EdD  
University of Virginia, MLA  
Yale University, BA

#### Other

Rutgers Leadership Academy, 2019

### EMPLOYMENT

#### Academic

Rutgers University: Associate Professor of Practice, MLA Program Director, 2024  
Rutgers University: Associate Professor of Practice, BSLA Program Director, 2017

#### Positions

Rutgers University: Assistant Professor of Practice, BSLA Program Director, 2015 - 2024  
Rutgers University: Instructor, Landscape Architecture, 2008-2014  
Rutgers University: PTL, Landscape Architecture, 1992, 1994, 2006-2008  
New York Botanical Garden: Instructor, Landscape Architecture, 1989-92  
University of Virginia: Teaching Assistant: Graphics, & History of Landscape Architecture, 1985-86

#### Professional Practice

Holly Grace Nelson, Landscape Architect, est. 1994  
Glen Fries Associates, Architects and Landscape Architects: Associate, 1987-93  
Robert A.M. Stern, Architect: Landscape Architect, 1987  
Peter G. Rolland and Associates: Landscape Architect, 1986-87

#### Academic Award

The Presidential Award for Excellence in Teaching, Rutgers University, 2024

### PRACTICE

#### Registration

Registered Landscape Architect: The State of New Jersey, 1994 to present  
The State of New York, 1990 to 2020

#### Design Awards

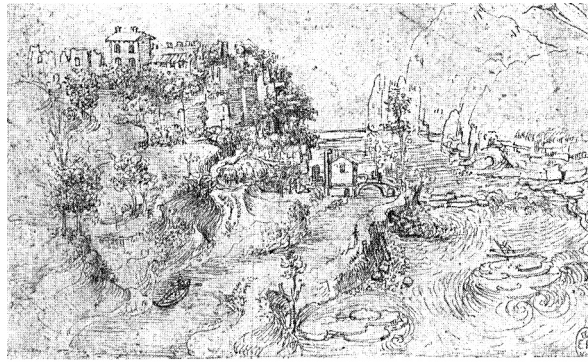
NJASLA Merit Award, 2017, Environmental Enhancement: Princeton Energy Parklet (Nelson/Weiss, Inc.)  
NJASLA Merit Award, 2015, Unbuilt Project: Shallcross Hall Addition @ Friends Central School, Wayne, PA  
NJASLA Merit Award, 2014, Landscape Planning & Analysis: Socialspaces Masterplan—Stonebridge at Montgomery Retirement Community  
NJASLA Honor Award, 2010, for Mid-century Modern off Rittenhouse Square  
NJASLA Merit Award, 2007, for Willow Gate Farm  
N.J. Historic Preservation Award, 2007, for Woodrow Wilson House  
NJASLA Merit Award, 2006, for Westland  
NJAPA Smart Growth Award for Residential Infill, 2005, for Radburn Housing with Landmark Home Design  
Stanley Abbott Award for Academic Achievement, U.V.A., 1986  
ASLA Student Merit Award, 1986

#### Design Award Juror

PA/DE Chapter American Society of Landscape Architecture 2018 Design Awards  
NJASLA Chapter American Society of Landscape Architecture 2016 Design Awards

#### Professional Service

ASLA Education Committee, 2016-2020  
Princeton Site Plan Review Advisory Board (1993-2001, 2013-2019)  
Princeton Parks & Recreation Dept. Masterplan Steering Committee, 2007



*Nelson . Weiss Inc.*

**HOLLY GRACE NELSON**

*Landscape Architect*

**Professional Associations**

American Society of Landscape Architects Member, 1990 to present  
NJ ASLA Member, 1994 to present  
EDRA, 2022

**Exhibitions**

Living Laboratories: Campus Learning Landscapes, IFNH, 2018  
Quark Park, Weather Garden, Princeton, N.J., 2006

**Living Lab**

2023: Pollinator Parking Lot Gardens at Blake Hall

**Student-Design Demonstration Gardens**

2022: Native American Acknowledgement Garden: Concept Design (with Anita Bakshi and Jameson Sweet)  
2022: 103 Davidson Courtyards (with James Erdogdu)  
2021: Blake Hall Rain Garden and Plant Library  
2020: Urban Ag Garden at Martin Hall  
2019: Provisioning Garden, Cook Office Building (with Christina Kaunzinger)  
2018: Pollinator Garden, IFNH (with Christina Kaunzinger)  
Culture of Health Academy Nursery School Mobile Vegetable Garden (Byrne Seminar with Arianna Lindberg)  
2017: Meadow Border Garden, IFNH Entrance (with Christina Kaunzinger)  
Culinary Herb Garden, IFNH (Byrne Seminar with Arianna Lindberg)  
2016: Amphitheater Garden, IFNH

**Selected Built Work-- Commercial & Institutional**

Academic Arts Building Landscape Masterplan, Drew University  
Madison, New Jersey  
Architect: Ford Farewell Mills & Gatsch Architects

The Cottage Club Landscape Masterplan  
Princeton University

Foundations Preschool Landscape Masterplan  
Clinton, New Jersey

The Grounds for Sculpture: Invited Competition  
Hamilton, New Jersey  
Architect: Alan Chimacoff – The Hillier Group

HiTOPs Bonnie Parker Garden Masterplan  
Princeton, New Jersey

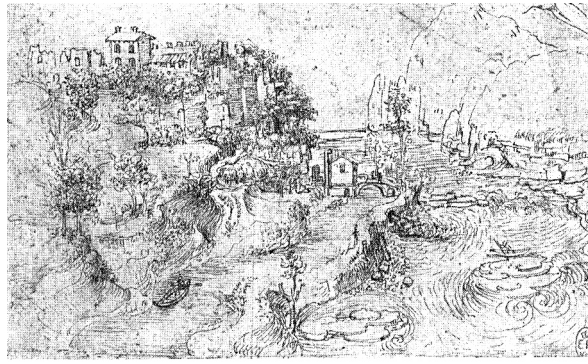
Institute for Advanced Study: Breuer Housing --Landscape Masterplan  
Princeton, New Jersey  
Architect: Sussna Architects

Ivy Club Landscape Masterplan  
Princeton, New Jersey  
Architect: Dmitri Prophyrios

King Juan Carlos of Spain Center Courtyard Garden, N.Y.U.  
New York, New York  
Architect: Polshek & Partners

Landmark Homes at Princeton  
Princeton, New Jersey

Morven, Phase 3 Masterplan



*Nelson . Weiss Inc.*

## HOLLY GRACE NELSON

*Landscape Architect*

Princeton, New Jersey

Architect: Ford Farewell Mills & Gatsch Architects

Palmer House Landscape Masterplan, Princeton University

Princeton, New Jersey

The Pennington School Student Center Plaza

Pennington, New Jersey

Architect: Ford Farewell Mills & Gatsch Architects

Princeton Friends School Landscape Masterplan

Princeton, New Jersey

Princeton High School Entry Terrace

Princeton, New Jersey

Princeton Theological Seminary Garage

Princeton, New Jersey

Architect: Ford Farewell Mills & Gatsch Architects

The City of Radburn: Single- & Multi-Family Housing Development

Fair Lawn, New Jersey

Developer: Landmark Homes

Stonebridge Socialspaces Masterplan

Skillman, New Jersey

Summit City Hall & Police Station

Summit, New Jersey

Architect: Ford Farewell Mills & Gatsch Architects

Tenacre Foundation Landscape Masterplan 1

Princeton, New Jersey

Architect: Ford 3 Architects

Tenacre Foundation Landscape Masterplan 2

Princeton, New Jersey

Architect: Farewell Architects

Friends Central Social Center Landscape Masterplan

Wayne, PA

Updike Farm Landscape Masterplan, Princeton Historical Society

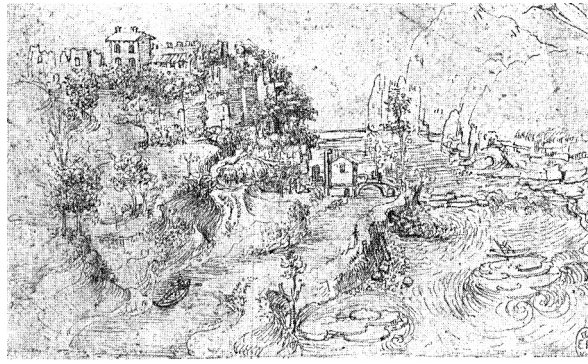
Princeton, New Jersey

### **SCHOLARSHIP Publications**

Nelson, H.G. (2024). *Ways of Seeing: Design-based Research in a Class on the Social Aspects of Design*. (Publication No. 30692236). [Doctoral dissertation, Rutgers University]. ProQuest Dissertations & Theses Global.

Nelson, H.G., Kaunzinger, C., Hartman, J., Gano, E., Struwe, L., & Lawson, L. (2019). Engaged learning in the landscape: Campus As Living Lab. *Landscape Research Record 8*. 359-372. [https://thecela.org/wp-content/uploads/Landscape\\_Research\\_Record-8-v4.pdf](https://thecela.org/wp-content/uploads/Landscape_Research_Record-8-v4.pdf)

Nelson, H.G., Bakshi, A.B., Goldstein, D.J., Lawson, L. (2016). Interpretive landscape design, race, and public history. *Landscape Record 5*. 29-37. [https://thecela.org/wp-content/uploads/NELSON-BAKSHI-GOLDSTEIN-LAWSON\\_Body.pdf](https://thecela.org/wp-content/uploads/NELSON-BAKSHI-GOLDSTEIN-LAWSON_Body.pdf)



Nelson . Weiss Inc.

HOLLY GRACE NELSON

Landscape Architect

Nelson, H.G. (2014). The machine in the garden: Framing the agricultural landscape. *you are here: the journal of creative geography*. University of Arizona.

#### Reviews

Nelson, H.G. (2011). Educating at the Boundaries:" Community matters" Symposium. *Landscape Journal: design, planning, and management of the land*, 30(2), 326-328.

#### Academic Conferences

Lo, A., & Nelson, H. (2023, February 13). *Experiential Online Learning: Participatory Community Game Case Study*. The Teaching and Learning Environment Conference. [https://passhe.info/conference/?page\\_id=8439](https://passhe.info/conference/?page_id=8439)

Lo, A., & Nelson, H. (2022, February 7). *Experiential Online Learning: Participatory Community Game Case Study*. Rutgers Online Learning Conference.

Kaunzinger, C., Nelson, H., Clemson, B., Erdogdu, J. (2020, October 20). *Engaged Learning in the Landscape*. Association for the Advancement of Sustainability in Higher Education.

Kaunzinger, C., Nelson, H. (2019, March 6). *Engaged Learning in the Campus Landscape*. Council of Educators in Landscape Architecture (CELA).

Nelson, H. (2016, September 23). *Interpretive Landscape Design, Race, and Public History*. CELA.

Nelson, H. (2013). *Visualizing NJ Agriculture*. CELA.

Nelson, H. (2013). *Programming the Middle Landscape: Cherry Grove Farm Case Study*. CELA.

Nelson, H. (2012). *Beyond Food Production*. [Panel]. ASLA.

Nelson, H. (2012): *Envisioning the Agricultural Landscape*. CELA.

Nelson, H. (2012): *The Role of Landscape Architecture in Cultivating the Agricultural Landscape in N.J.* CELA. PA/DE ASLA Annual Meeting. (2012). Agriculture Panel.

Nelson, H. (2012). *St. Croix Studio: People and Place*. [Poster]. Rutgers Cultural Heritage & Preservation Studies Conference

Nelson, H. (2010). *Designing the Twenty-first Century Farm*. APLU Summit – Creating Change: Building Human Capacity for a Sustainable Future.

Nelson, H. (2010). *Tools for Interpreting Place*. APLU Summit – Creating Change: Building Human Capacity for a Sustainable Future.

#### Invited Academic Presentations

Nelson, H., Smith, S., Wyatt, E. (2024, February 7) *Intentional Recruitment Practices: Working Together to Diversify Your Landscape Architecture Programs*. [ASLA Webinar].

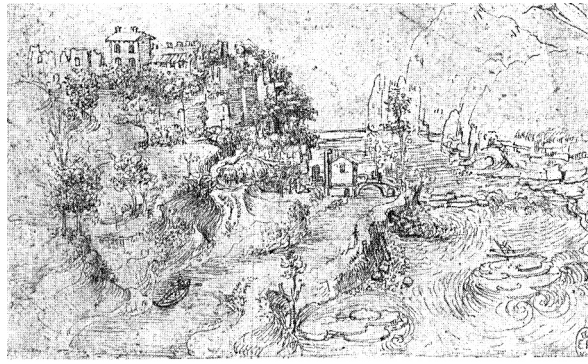
Bakshi, A. Sweet, J., Nelson, H., Errickson, L. (2022, September 29). *Celebrating Indigenous History and Culture: Native American Acknowledgement Garden*. Inclusion Summit 2022: Holding Space for Change. Rutgers University, Tyler Clementi Center for Diversity Education and Bias Prevention.

Cypess, R., O'Lear, A., Soto, K., Tchen, J., & Nelson, H. (2022, May 4). *Laboratories of Climate Citizenship*. Mobilizing the University for Climate Transformation, Rutgers University (Roundtable 2).

Boone, K., Mayer, M., Yocum, Y., Rovira, R. & Nelson, H. (2019, February 1). *Recruitment in Undergraduate Landscape Architectural Education: Challenges and Strategies*. Landscape Architecture Foundation. [Webinar].

Kaunzinger, C. Nelson, H. (2019, April 17). *Living Laboratories: Learning Landscapes--from Pollinator Gardens to Drone Playground*. Leonardo Art Science Evening Rendezvous (LASER) Talk, Zimmerli Art Museum, Rutgers University.

Nelson, H. (2017, October 6). *Social Landscapes*. Hunan Polytechnic Training Program.



Nelson . Weiss Inc.

## HOLLY GRACE NELSON

Landscape Architect

### Other Presentations

Nelson, H. (2018, May19). *Sustainable Residential Landscape Design: Honore Residence*. Friends of Princeton Open Space Lecture Series.

Nelson, H. (2014, June 11). *Can Landscape Architecture help create community?* Lathrop Retirement Communities, Northampton, MA.

### Grants

\$ 62,000 U.S. Department of Interior—Insular Territories: St. Croix Marine Research & Education Center Conceptual Site Design St Studio (co-PI with JeanMarie Hartman)  
Includes \$ 10,000 Student Outreach Internship in St. Croix

### Press

Atwater, W. (2018). *Living Labs Construction*. [Video]. You Tube. <https://www.youtube.com/watch?v=7TS1HqmM8PM>

Bakshidesign. (2022, September 8). *Native American Acknowledgement Garden*. <http://bakshidesign.com/blog>

Climate Change Fork. (2022, July 19). *Campus as a Lab: Part 1*. <https://climatechangefork.blog.brooklyn.edu/2022/07/19/campus-as-a-lab-part-1/>

Odum, J. (2017, November 9). *Landscape Architecture students create living laboratory at Rutgers*. Total Landscape Care. <https://www.totallandscapecare.com/business/article/15041234/rutgers-landscape-architecture-students-learn-outdoors>

Rutgers University. (2021, July 21). *CUES partners with Drumthwacket Foundation on property masterplan as a Model for Sustainability*. <https://sebsnjaesnews.rutgers.edu/2021/07/cues-partners-with-drumthwacket-foundation-on-property-masterplan-as-a-model-for-sustainability/>

Rutgers University. (2020, July 20). *Living Labs in Action: Experimental Gardening on Cook Campus*. SEBS and NJAES Office of Communications. <https://sebsnjaesnews.rutgers.edu/2020/07/living-labs-in-action-experimental-gardening-on-cook-campus/>

Rutgers University. (2019, September 25). *LA students give Rutgers golf course entrance a makeover*. SEBS and NJAES Office of Communication. <https://sebsnjaesnews.rutgers.edu/2019/09/la-students-give-rutgers-golf-course-entrance-a-makeover/>

Rutgers University. (2019, September 9). *Provisioning garden is the newest living laboratory on the Cook Campus*. SEBS and NJAES Office of Communication. <https://sebsnjaesnews.rutgers.edu/2019/09/provisioning-garden-newest-living-laboratory-on-cook-campus/>

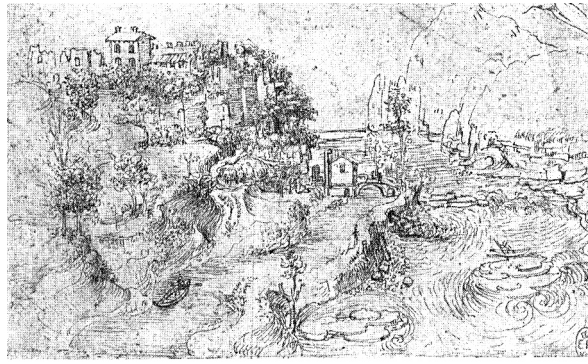
Rutgers University. (2018, November 12). *Byrne Seminar Students Build Schoolyard Teaching Garden for IFNH Nursery School*. SEBS and NJAES Office of Communications. <https://sebsnjaesnews.rutgers.edu/2018/11/27466/>

Rutgers University. (2017, November 27). *Campus Living Lab evolves with installation of kitchen garden and shade trees at IFNH*. SEBS and NJAES Office of Communications. <https://sebsnjaesnews.rutgers.edu/2017/11/campus-living-lab-evolves-with-installation-of-kitchen-garden-and-shade-trees-at-ifnh/>

Rutgers University. (2017, November 9). *Rutgers outdoor classroom engages Landscape Architecture students*. SEBS and NJAES Office of Communications. <https://sebsnjaesnews.rutgers.edu/2017/11/landscape-architecture-students-create-living-laboratory-at-rutgers/>

Rutgers University. (2017, October 30). *#Did you know that the meadow out front of the IFNH also serves an outdoor, living classroom designed to engage with students and the Rutgers University community at large?* [Video]. Facebook. <https://www.facebook.com/RutgersIFNH/posts/1488992601186850>

Rutgers University. (2017, October 18). *Landscape Architecture students create living laboratory at Rutgers*. SEBS and NJAES Office of Communications.



Nelson . Weiss Inc.

## HOLLY GRACE NELSON

Landscape Architect

<https://sebsnjaesnews.rutgers.edu/2017/11/landscape-architecture-students-create-living-laboratory-at-rutgers/>

Rutgers University. (2017, May 4). *Student-designed IFNH garden will serve as eye-catching Living Lab* Communications.

<https://sebsnjaesnews.rutgers.edu/2017/05/student-designed-ifnh-garden-will-serve-as-eye-catching-living-lab/>

. SEBS and NJAES Office of

Rutgers University. (2016, June 2). *New Landscaped Garden Another Reason to Visit the Institute for Food, Nutrition and Health*. SEBS and NJAES Office of Communications.

<https://sebsnjaesnews.rutgers.edu/2016/06/another-great-reason-to-visit-the-institute-for-food-nutrition-and-health/>

Smith, T. (2022). *Embracing outdoor living: Meet local landscape and garden design experts*. *Princeton Magazine*.

<https://www.princetonmagazine.com/embracing-outdoor-living/>

The Drumthwacket Foundation. (n.d.) *Sustainability*. <https://drumthwacket.org/education/sustainability/>

Town Topics. (2012, October 24). *Mercer Street Mansion opens doors for Historical Society House Tour*.

<https://www.towntopics.com/wordpress/2012/10/24/merc-street-mansion-opens-doors-for-historical-society-house-tour/>

Tree of Life Review of Art. (n.d.) "Quark Park: Visions". [http://treeoflifereview.com/art\\_quarkpark.php](http://treeoflifereview.com/art_quarkpark.php)

### TEACHING

#### Student NJASLA Awards

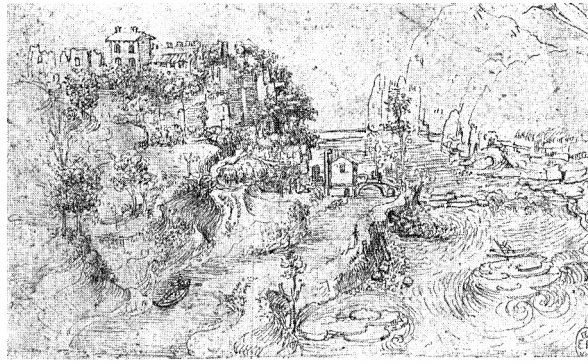
- 2024: Emily Chen, "Pocket park: Designing a community hub for art, music, and play in Sunnyside, Queens," Student Award.
- 2020: Adriana Hall and Katherine Rodriguez, "N.J. Cultural Complex: Re-Emerging History", Student Award.
- 2018: Edwin Gano and Joseph Tidona, "Stair-Side Farm", IFNH. Student Award.
- 2018: Esther Lim, "Finding Wonder Outside and Between the Pages" Student Award.
- 2018: Diana Randjelovic and Nicole Cohen, "Stairs to Meadow, IFNH". Student Award.
- 2017: Samantha Dreher: "ADA Amphitheater Garden", IFNH. Student Honor Award—Design.
- 2016: Theresa Hyslop: Living Labs for the Cook/Douglass Campus: "Enhancing Educational Opportunities and Campus Environment", Student Merit Award-- Landscape Planning and Analysis.
- 2016: Muzi Li: "Landscape of Life Healing Garden, New Providence, NJ", Student Merit Award—Design.
- 2015: Deanna Lu: "Storytelling through the Landscape". [Video]. Student Chapter Award—Landscape Planning and Analysis.
- 2015: Michelle Hartmann, Rebecca Cook, Jessie Woods: "Re-envisioning Campus: Masterplanning for Students by Students", Student Merit Award—Communication.
- 2015: Kevin Perry: "Praxis Studio: Agricultural Literacy" [Video]. NJASLA Student Honor Award—Communication.

#### Other Student Awards

- Muzi Li's Landscape of Life Healing Garden:
  - Award of Excellence for Design/Build: Commercial/Industrial Landscape Achievement Award, 2016
  - National Association of Landscape Professionals Awards of Excellence Grand Award, 2016
  - Northeast Pool and Spa Association Outstanding Achievement Award—Gold, 2016

#### Masters Theses

- 2024:
  - Chair: Daboll, D. *Preparing the Forest: Designing Intersections Between Montessori and Nature-Based Education*.
  - Chair: Wright, A. *Conjuring a Black Feminist Space that Acknowledges the Life of Sojourner Truth*.
  - Hammerdahl, K. *Safari: A Great Adventure*.
- 2023:
  - Chair: Chen, E. *Pocket park: Designing a community hub for art, music, and play in Sunnyside, Queens*.
  - Holden, T. *Designing a landscape bench*.
  - Lee, J. *Roots: Climate change and Korean Agriculture in the US*.
  - Miranda, A. *Social greenway in Jersey City: Connecting the community with history and cultural nodes*.
  - Sialas, J. *Along the Raritan River: Connecting Rutgers Gardens to the D&R Canal State Trail*.
- 2022:
  - Chair: Lo, A. *Experiential mapping and the design of small-scale landscapes: The Princeton Theological Seminary exercise*.
- 2021:
  - Caputo, G.. *Healing landscapes: The future of Fresh Kills Park*.

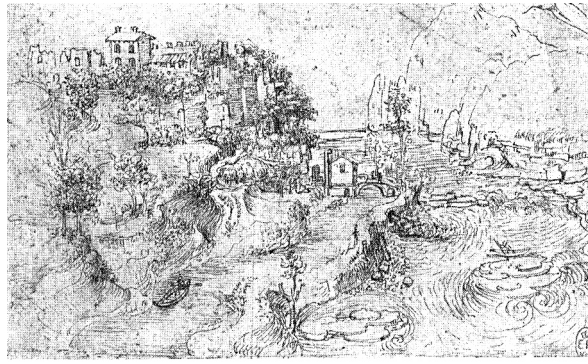


Nelson . Weiss Inc.

## HOLLY GRACE NELSON

Landscape Architect

- Cron, N. *Contemporary flood management: Bound Brook, NJ.*  
Ilkow, D., *Changing the American Lawn: A quest for normalizing weeds.*  
Leifer, A. *The Jordan River: Understanding water in a conflict zone.*  
Orlino, Z. *Of borrows and bricolage: Imagining the water, plants, and people at Abbott Farm marshlands.*
- 2020: Erickson, A. *Nature, Culture, infrastructure: Urban and suburban hiking in New Jersey's Gateway Region.*  
Forsyth, K. *Where have all the flowers gone? A call for color in public open spaces.*
- 2019: Chair: Martic, S. *Revealing the unseen river: A river-centric landscape exploration.*  
Cohen, N. *Traversing urban wildlands: An intervention within the unique plant communities of Liberty State Park.*  
Randjelovic, D. *Transparent traces.*
- 2017: Chair: Betances, A. *Urban Refuge Partnership: A case study in reconnecting an urban community to nature.*  
Chair: Robles, B. *A garden for East Flatbush.*  
Dahringer, D. *Optimizing ecological function, agricultural productivity, and aesthetic value on a small site in NJ's rural-urban fringe.*
- 2016: Chair: Li, M. *An exploration of senior-friendly design interventions for Columbus Park, NYC.*  
Pilla, M. *Stream bank revitalization in Somerville, NJ: A case study in planning strategy for the integration of ecological and social needs in public open space.*  
Schlesinger, A. *Pop-up compost project: Reframing the process and perceptions of community composting in New Brunswick, NJ.*
- 2015: Chair: Burkhalter, J. *Understanding community: Designing an interactive school landscape for individuals with symptoms of autism.*  
Lugar, K. *The living sea edge: An ecological approach to coastal protection at the Chapel Site on Sandy Hook, Gateway National Recreation Area.*  
Yan, H. *Visualizing Ecological Services: Bridging Land Recovery and Social Awareness.*
- 2014: De Vries, A. *Suburban dirt*  
Rohde, Z. *Setting the stage for the emergence of new realities—The interface of hand, electronic, and lens-based media for the sensible discovery & imagination of landscape morphology.*  
Vardi Topal, H. *Potential of community gardens for sustainable urban development in Izmir, Turkey.*
- 2013: Chair: Huang, W. *Retrofitting the everyday landscapes of NJ Transit Centers.*  
Perry, K. *Walters Hall: A space for people.*  
Suh, B. *Revitalization of open space of high-rise apartment complex.*
- George H. Cook Senior Thesis**
- 2021: Mohamad, R. *Increasing tree canopy coverage: A study on the effect of increasing tree canopy coverage from 17% to 40% and additional green infrastructure interventions on the quality of life in Jersey City.*
- 2020: Leifer, A. *Kibbutzim and moshavim: Exploring communities and their relationships with the agricultural landscape in Israel and the West Bank.*
- 2017: Malkinski, A. *Rutgers ecological golf course site analysis.*
- 2016: Robles, B. *A place to call home: A courtyard design for Ebbets Field Apartments.*
- 2015: Hyslop, T. *Creating a framework for Living Labs on Cook Douglass Campus.*
- 2014: Cook, R. *Designing with water: An exploration for stormwater management practices for Rutgers University's Cook Douglass Campus.*  
Hartmann, H. *Sustainable socialspace: The understanding & application of social space on Cook Douglass Campus.*  
Jessie Woods, "Sustainable Transportation Strategies & Their Application in University Design"
- Honors Capstone Projects**
- 2024: Taveras, J. *Analysis of Rutgers NB Muslim Student Experience.*
- 2024: Zuppari, A. *Reflections of the Forest: EcoPreserve Augmented Reality Educational Game*
- 2023: Daboll, D. *Spatializing Montessori and Nature Based Education.*

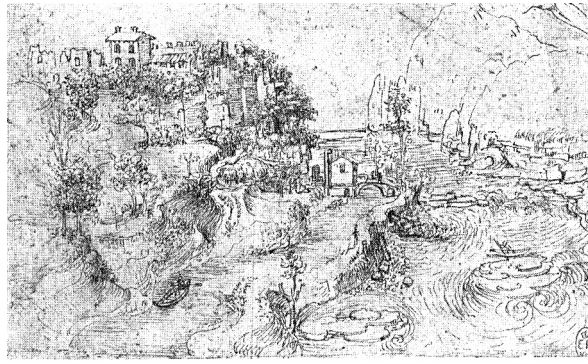


Nelson . Weiss Inc.

## HOLLY GRACE NELSON

Landscape Architect

- FIGS Advisor** 2018: Landscape Architecture Student Advisor for Amanda Leifer  
2019: Landscape Architecture Student Advisor for Lexi Serido
- Student Presentations** Trinidad, S. & Martic, S. (2019, March). *Exploring fourth nature along re-purposed transportation arteries of the emerging East Coast Greenway*. Fabos Conference on Landscapes and Greenway Planning, University of Massachusetts, Amherst, MA.  
Trinidad, S. & Martic, S. (2019, April). *Exploring fourth nature along re-purposed transportation arteries of the Emerging East Coast Greenway*. Mid Atlantic Greenways and Trails Summit, University of Pennsylvania.  
Pilla, M. (2016). *An exploration of the use of social media for public participation in ecological planning and design process*. CELA.  
Schlesinger, A. (2016). *Designing for modular composting at the community scale*. CELA.  
Aretakis, T. (2015). *Investigating new farming typologies*. Urban Environmental Stewardship Conference.
- Student Independent Projects** 2022: Alexis Serido, "Research Extensions and Urban Forests: An Analysis of Land Use, Accessibility, and Environmental Education Opportunity"  
2020: Urban Ag Garden at Martin Hall. Designed by Katherine Rodriguez. Constructed by Katherine Rodriguez, Jess MacPhee, Tiffany Nguyen, Aliyah Williams, Construction 2 class, Jessica Thorning, Max Lazen, Brendan Gray.  
2019: Rutgers University Golf Course Entry Garden (Design by Katherine Rodriguez, Jessica MacPhee & Green Team install)  
LA Student Club: Pollinator Garden, Buccleuch Park, New Brunswick (collaboration with Lower Raritan Watershed Partnership)  
2018: Blake Hall Accreditation Garden (Jason Cincotta, Alexis Lo, Green Team, student volunteers)  
Martin Hall Garden (Joe Tidona, Edwin Gano, student volunteers)  
Design Internship Grant: Metuchen Greenway Extension (with Brandon Younie, Sophia Trinidad, Wolfram Hoefer, in collaboration with NJASLA, NPS Rivers, Trails, and Conservation Program, Metuchen Planning Department)  
Universal Institute Rehabilitation and Living Center Garden (Emily Otterbine and Universal staff)  
Everas Community Services Community Garden (Kayla Weiss, Everas staff, and Laura Lawson)  
2017: Amber Betances & Mai Thy Bui, Deiner Park topographic model  
Emily Otterbine, Devin Fields, Anna Erickson: Emscher-genossenschaft Concept Designs (CUES)  
Barbra Walker, Blackwells Mills Causeway Design and Design Application & Approval Process (in collaboration with NJDOT, Millstone Valley Preservation Coalition and Christina Kaunzinger)  
2016: Muzi Li, Landscape of Life Healing Garden (NJ Sharing Network, New Providence, NJ)
- Student Exhibitions** PARKING Day, (Rutgers Student Chapter of the ASLA), 2014-17  
Esther Lim: *Finding Wonder Outside and Between the Pages*. Rutgers Art Library, 2018  
Jennifer Burkhalter: *SIGHT/SITE*, Rutgers Art Library (in collaboration with Kate Higgins), 2013  
Ag Fair, St. Croix, USVI, 2011—student projects for Marine Research & Education Center (with Christine Rung)  
St. Croix NPS Visitor Contact Station, Salt River Bay National Historical Park & Ecological Preserve: Student Designs for Marine Research & Education Center: public exhibition, 2011 (with Sarah Nitchman, NPS STX Internship). Included the Senior Studio benthic/terrestrial topographic model of Salt River Bay.  
NOFA Winter Conference, 2012, Princeton University: Farm Maps (by colloquium students: Christopher Jurgensen, Erin Greenwood, Kevin Perry, Brian Curry, Adam Cesanek)  
Terhune Orchards, Princeton NJ, 2012: Farm Maps (Brian Curry, Adam Cesanek, Ibrahim Bouzine, Christopher Jurgensen)  
Rutgers Garden-- Ecological Literacy Arbors: PRAXIS Farm Studio & Intro Environmental Design 2



*Nelson . Weiss Inc.*

## HOLLY GRACE NELSON

*Landscape Architect*

### **Student Internships**

Rutgers Golf Internship, 2017- 2019  
EmscherGenossenschaft Internship, 2017, 2018  
Maplewood Park Internship, 2017 to present  
Student Outreach Internship, NPS on St. Croix (2014)  
Ag in the City Internships, summer—Ellen Gallagher, Scott Miller (2014-5)  
Student Outreach internship, NPS on St. Croix (2013)  
Farm Summer Internship (2013)

### **Instruction**

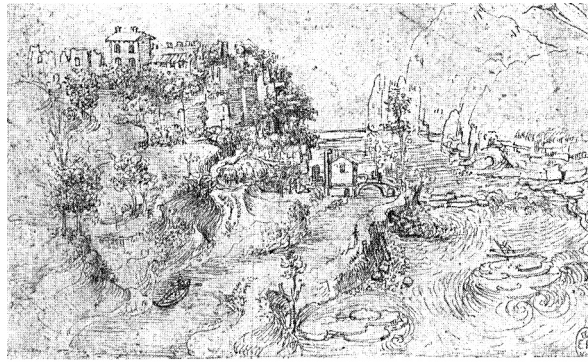
11:550:101	Landscape Studies
11:550:230	Environmental Design Analysis (solo and co-taught with Alexis Lo)
11:550:231	Introduction to Environmental Design (co-taught with Frank Gallagher; co-taught with Alexis Lo)
11:550:237	Landscape Drawing and Drafting
11:550:241	Construction 1: Site Engineering (co-taught with Richard Bartolone)
11:550:238	Landscape Management and Maintenance (with Maxine Marvosa)
11:550:271	Ag and the Landscape
11:550:301	Social and Cultural Aspects of Design (solo and co-taught with Laura Lawson)
11:550:332, 432	Praxis Studio: St Croix (3) Praxis Studio: Detroit
11:550:340	Planting Design (solo and co-taught with Christina Kaunzinger)
11:550:431	Advanced Landscape Architecture
11:550:435	Professional Practice
11:550:437	Special Problems in Landscape Architecture
11:550:438	Material Tectonics: Urban Ag Garden
11:550:439	Suburbia Transformed: Sustainable Drumthwacket
11:550:443	Summer Abroad Studio
16:550:531	Studio (Fundamentals)

### **Byrne Seminars**

2019: Landscape/Seascape. (with Gary Taghon, Professor and UPD, Program in Marine Sciences)  
2018: Building a Schoolyard Garden. (with Arianna Lindberg)  
2017: The Harvest Garden: Creating an edible landscape on campus. (with Arianna Lindberg)  
2016: Urban Landscapes and Democracy. (with Frank Gallagher)  
2014: Art and the Digital Age. (with Kate Higgins)  
2013: Explore NJ Farms.

### **SERVICE Committees**

NTT Task Force, 2012 and 2021  
ASLA Education Committee, 2016 to 2020  
*John Heinz Urban Wildlife Refuge* diversity video for ASLA and NJASLA, PA/DE ASLA Professional Chapters (shown at 2019 NJASLA Annual Conference, Atlantic City, February 2019).  
*4+1 Dual Degree* diversity video for Rutgers Landscape Architecture and NJASLA (shown at 2019 CELA Annual Conference, University of California, Davis, March 2019 and on LAF Diversity video, 2019).  
CEP, 2015 to present  
George H. Cook Committee, 2013 to present  
Landscape Architecture Scholarship Committee. Chair 2010-2020  
Faculty Advisor: Student Chapter of the ASLA; Graduate LA Club, Rutgers, 2012-2020  
Co-Chair: Landscape Architecture Undergraduate Committee, 2015 to present  
NTT Search Committees--various



*Nelson . Weiss Inc.*

**HOLLY GRACE NELSON**

*Landscape Architect*

**Field Trips**

NYC Parks, 2023

Storm King, 2022

ASLA Professional Field Trip (2018 Philadelphia, 2016 New Orleans, 2015 Chicago, 2014 Denver, 2013 Boston, 2012 Phoenix)

NYC Practitioner-based Design Tour, 2011 (in collaboration with Rich Bartolone)