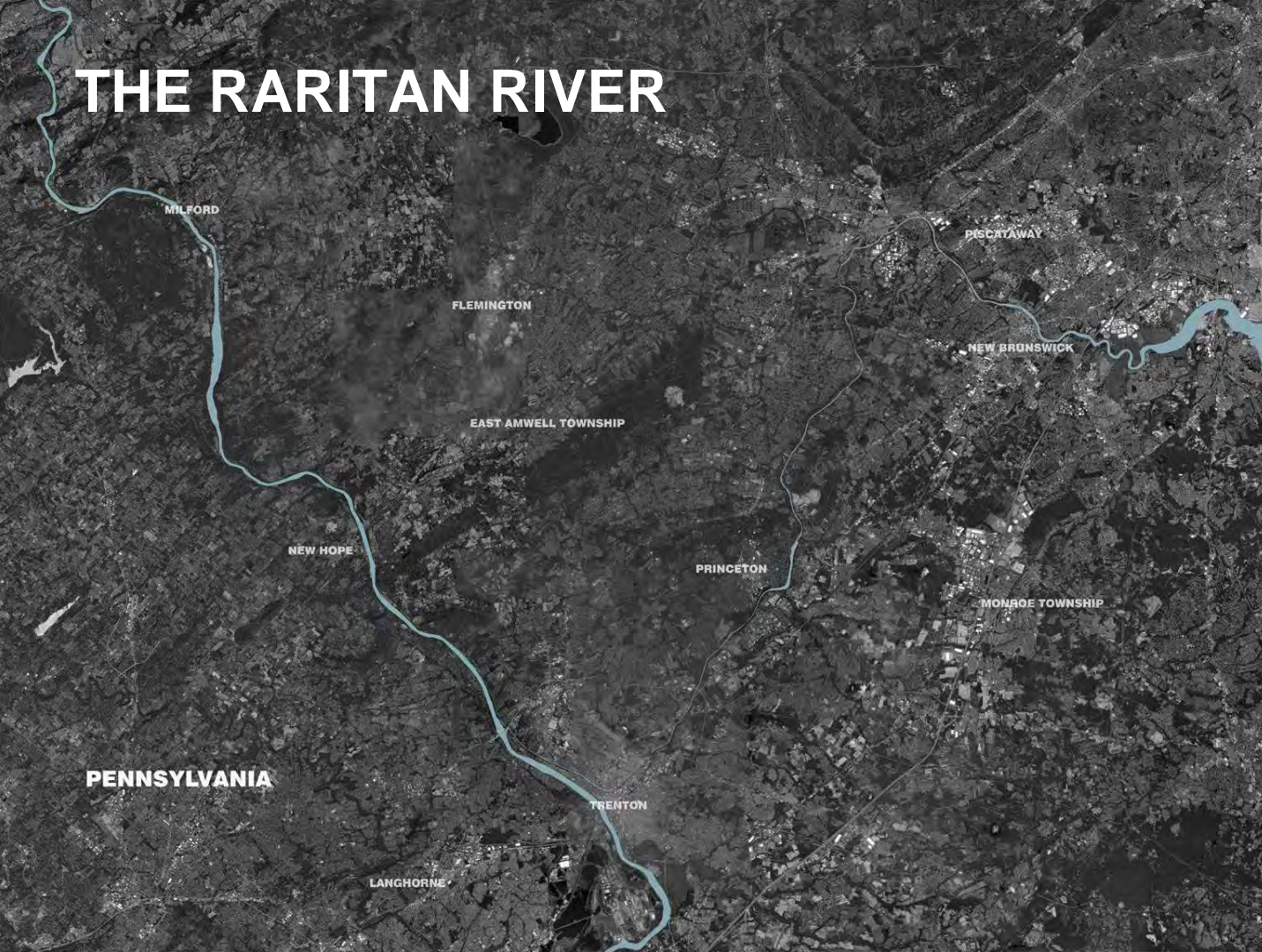




# **ALONG THE RARITAN RIVER**

**CONNECTING RUTGERS GARDENS TO  
THE D&R CANAL STATE TRAIL**

# THE RARITAN RIVER



# HISTORY OF THE RARITAN



# HISTORY OF THE RARITAN

**1888**

The construction of the Raritan River Railroad (RRRR) began



**1834**

The Delaware and Raritan Canal is completed

**1918**

A major typhoid outbreak was traced back to Oysters in the Raritan Basin



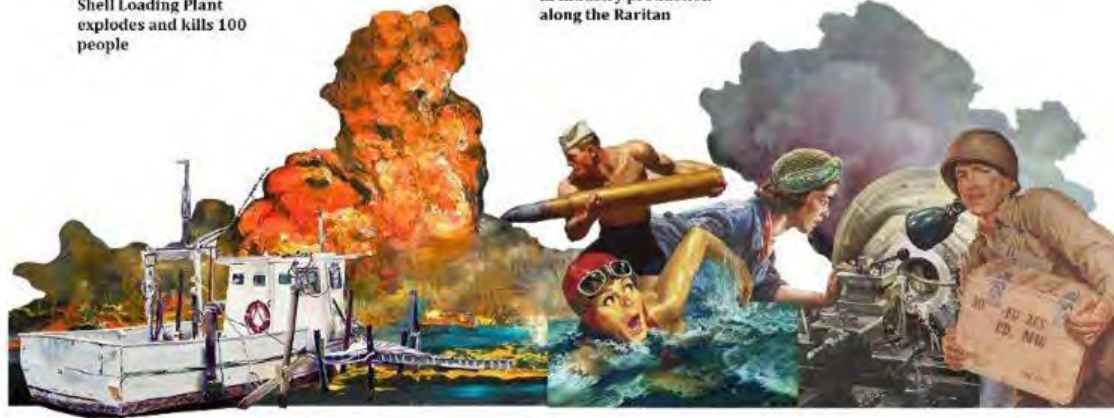
# HISTORY OF THE RARITAN

**1918**

TA Gillespie Company  
Shell Loading Plant  
explodes and kills 100  
people

**1941**

WWII leads to a boom  
in industry production  
along the Raritan



**1922**

Gertrude Ederle and  
other professional  
swimmers would  
bring attention to the  
pollution of the river

**1950**

Explosion in Perth  
Amboy as a result of  
loading ammunition

# HISTORY OF THE RARITAN

**1972**

Lyndon B. Johnson  
passes the Clean Water  
Act

**1973**

The D&R Canal be-  
came a part of the  
National Register of  
Historic Places

**2009**

Sustainable River  
Initiative produced  
reports and methods  
on how to restore the  
river



**1980**

The first Raritan Riv-  
er Festival was held  
in New Brunswick to  
celebrate water

# HISTORY OF THE RARITAN

**1000**

The Naraticongs were the first to inhabit the region

**1683**

The Dutch and English settle in the region

**1832**

Factories and mills set up near the Raritan river

**1888**

The construction of the Raritan River Railroad (RRRR) began

**1918**

TA Gillespie Company Shell Loading Plant explodes and kills 100 people

**1941**

WWII leads to a boom in industry production along the Raritan

**1972**

Lyndon B. Johnson passes the Clean Water Act

**1973**

The D&R Canal became a part of the National Register of Historic Places

**2009**

Sustainable River Initiative produced reports and methods on how to restore the river

**1776**

George Washington and his troops use the Raritan to outmaneuver the British

**1834**

The Delaware and Raritan Canal is completed

**1918**

A major typhoid outbreak was traced back to Oysters in the Raritan Basin

**1922**

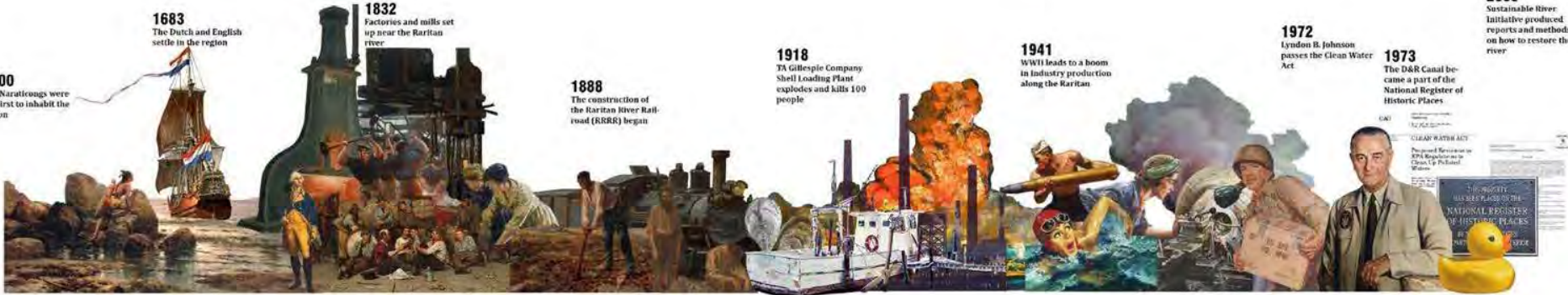
Gertrude Ederle and other professional swimmers would bring attention to the pollution of the river

**1950**

Explosion in Perth Amboy as a result of loading ammunition

**1980**

The first Raritan River Festival was held in New Brunswick to celebrate water



# RIVER MORPHOLOGY + URBAN FORM



1834  
The River and Dartmouth Canal is completed.

1918  
A major upland cut back was forced back as a result of the Dartmouth Basin.



1918  
The Dartmouth Company, North London, plans to build a bridge and a dam on the river.

1941  
WWII leads to a boom in industrial production along the river.



1922  
The Dartmouth Company and other producers of electricity would bring attention to the pollution of the river.

1950  
Explosion in Dartmouth as a result of building construction.



1972  
London B. Johnson gives the Dart River Act.

1973  
The Dart River became a part of the National Register of Historic Places.

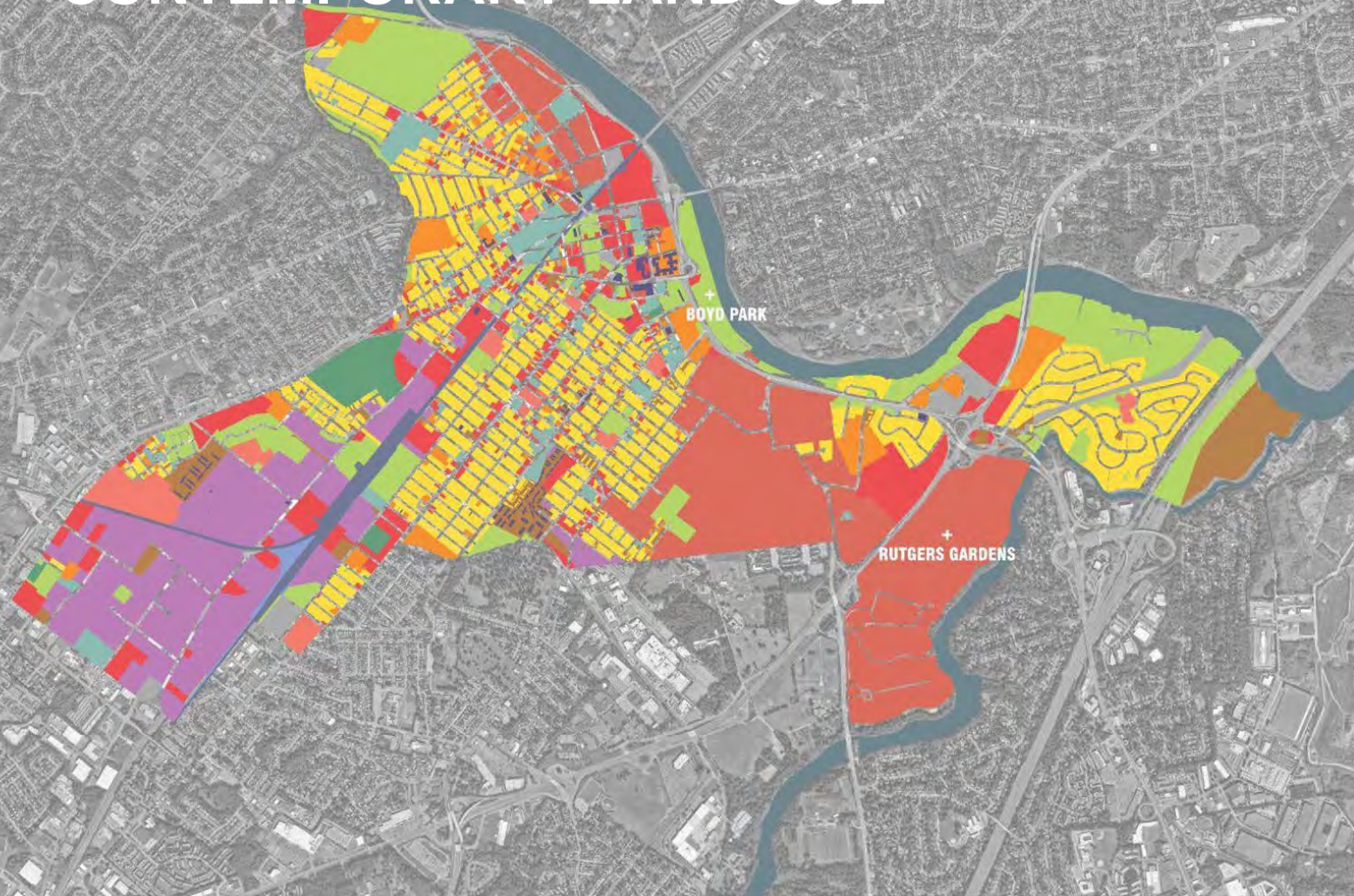


2009  
Sustainable River Initiative provided reports and methods on how to protect the river.

1980  
The first Dartmouth River Festival was held in New Brunswick on September 1st.

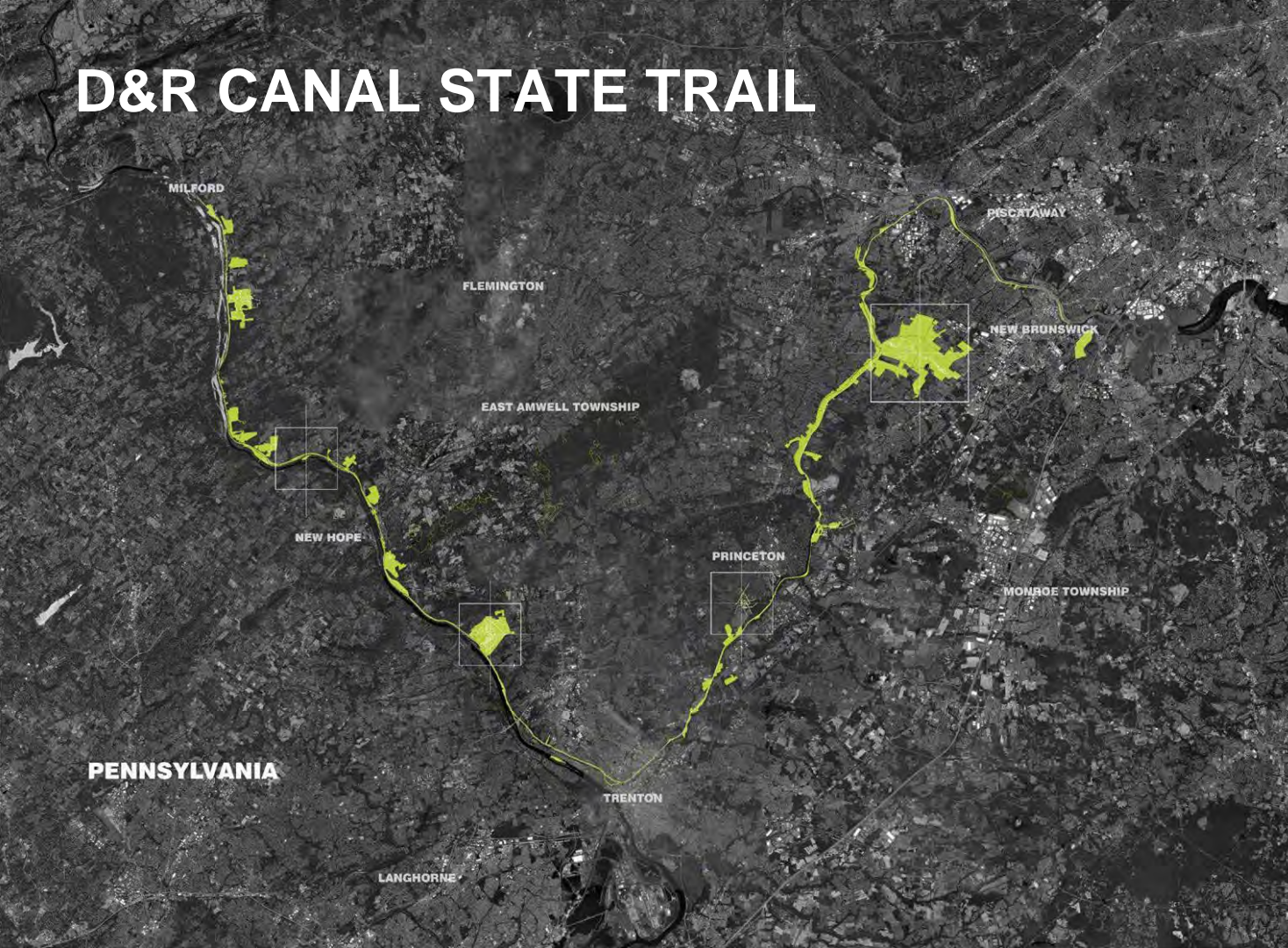


# CONTEMPORARY LAND USE





# D&R CANAL STATE TRAIL



**6 MILE RESERVOIR SITE**



**WASHINGTON CROSSING**



**PRINCETON BATTLEFIELD**



**BULLS ISLAND**



**RUTGERS GARDENS**



# 6 MILE RESERVOIR



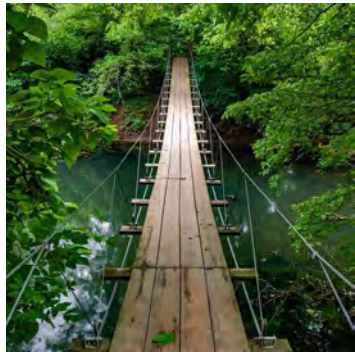


# WASHINGTON CROSSING





# PRINCETON BATTLEFIELD





# BULLS ISLAND



# CHATTAHOOCHEE TRAIL



- Serves as a recreational amenity for residents
- Re-establish the connection people once had with the water
- Promotes stewardship and conservation
- Interventions to help improve the water quality
- Creates a safe, connective corridor for the public
- Creates better opportunities for better health, transportation and community cohesion

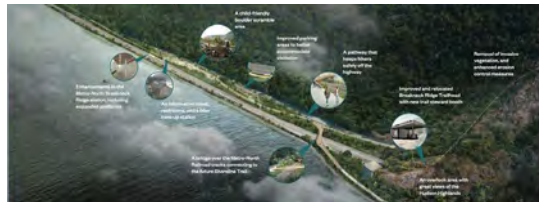




# HUDSON FJORD TRAIL



- Focuses on natural beauty, rich history and cultural heritage
- Enhances river access and restores pedestrian safety
- Accommodates for all types of traffic
- Dealt with severed connections (highways, railroads)
- Local desire for safer conditions





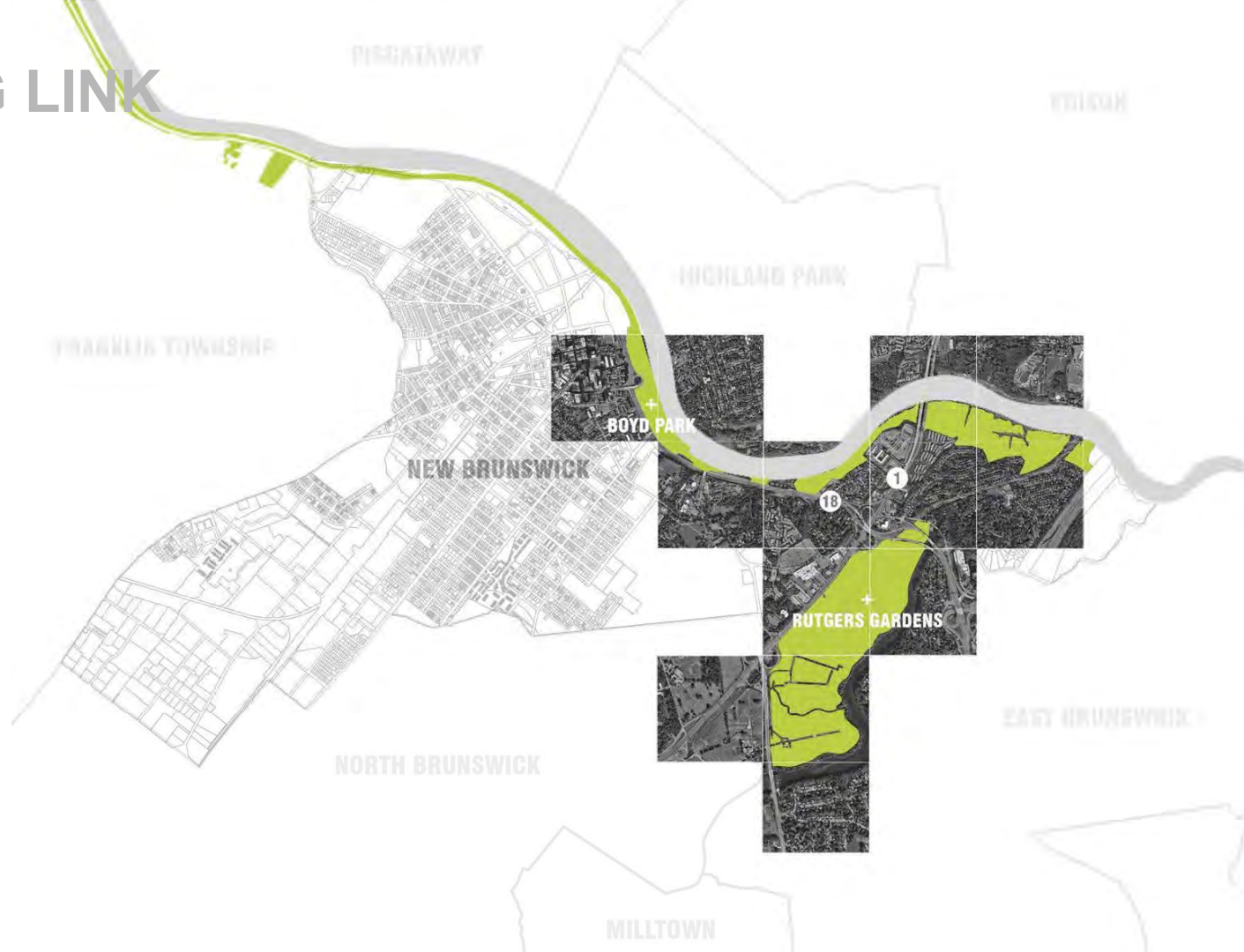
# NORWEGIAN SCENIC ROUTES



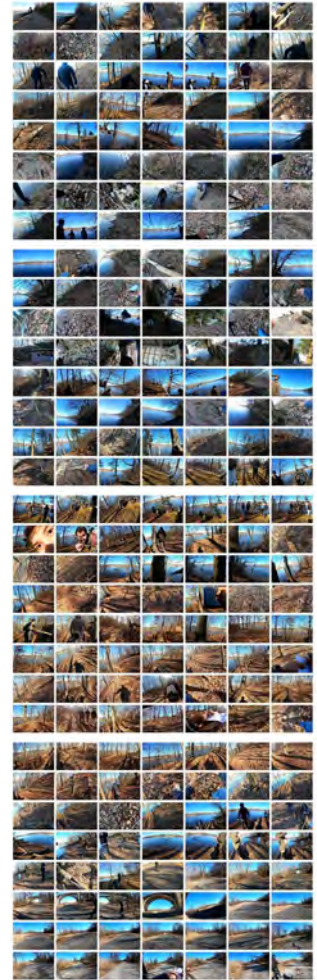
- Develop a network of scenic routes throughout the country
- Routes are alternatives to traditional highways
- Promotes harmonious relationship between tourism and preservation
- Offers unique moments to experience Norway's diverse landscape



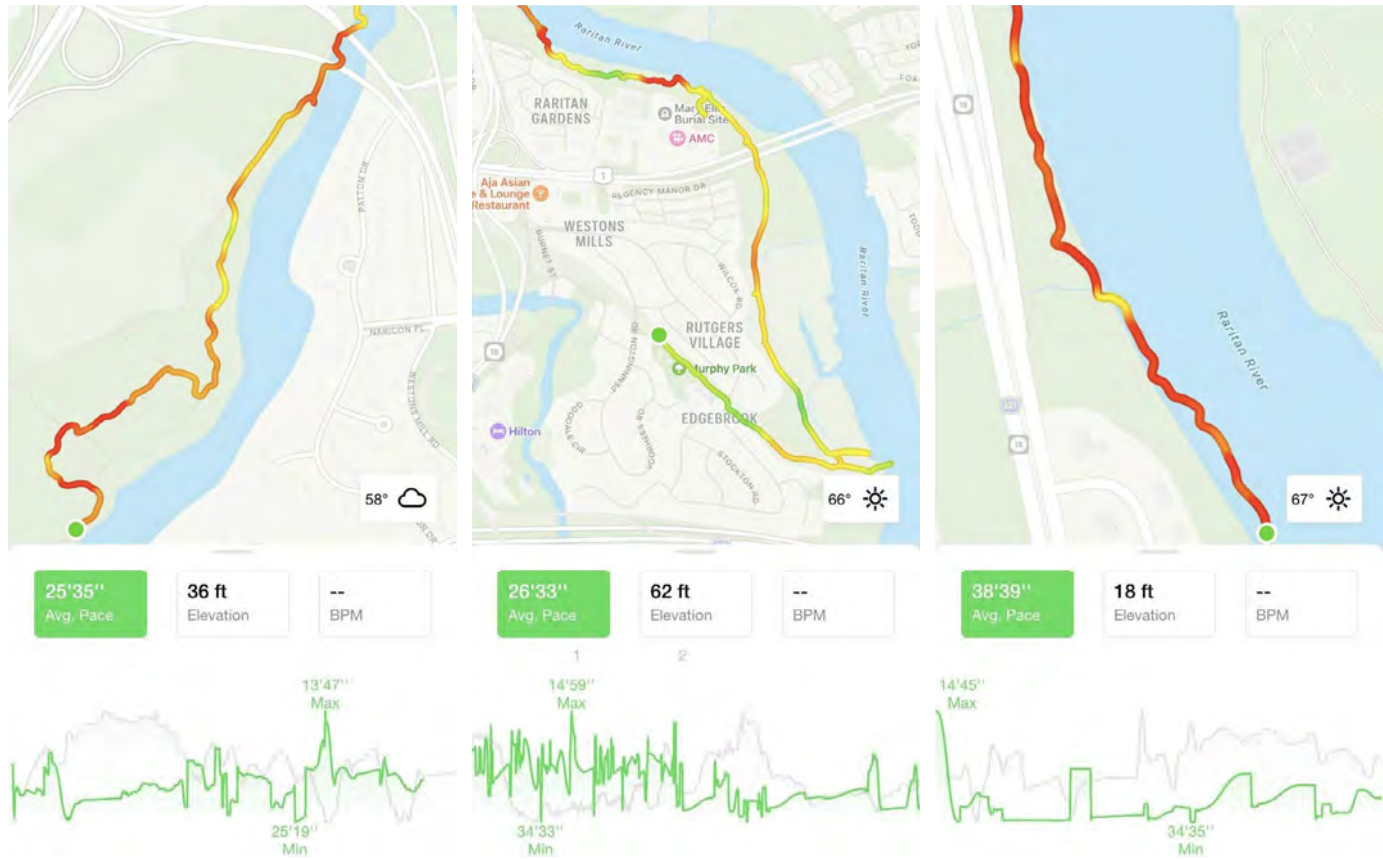
# THE MISSING LINK



# FIELDWORK: TRAVERSING THE SITE

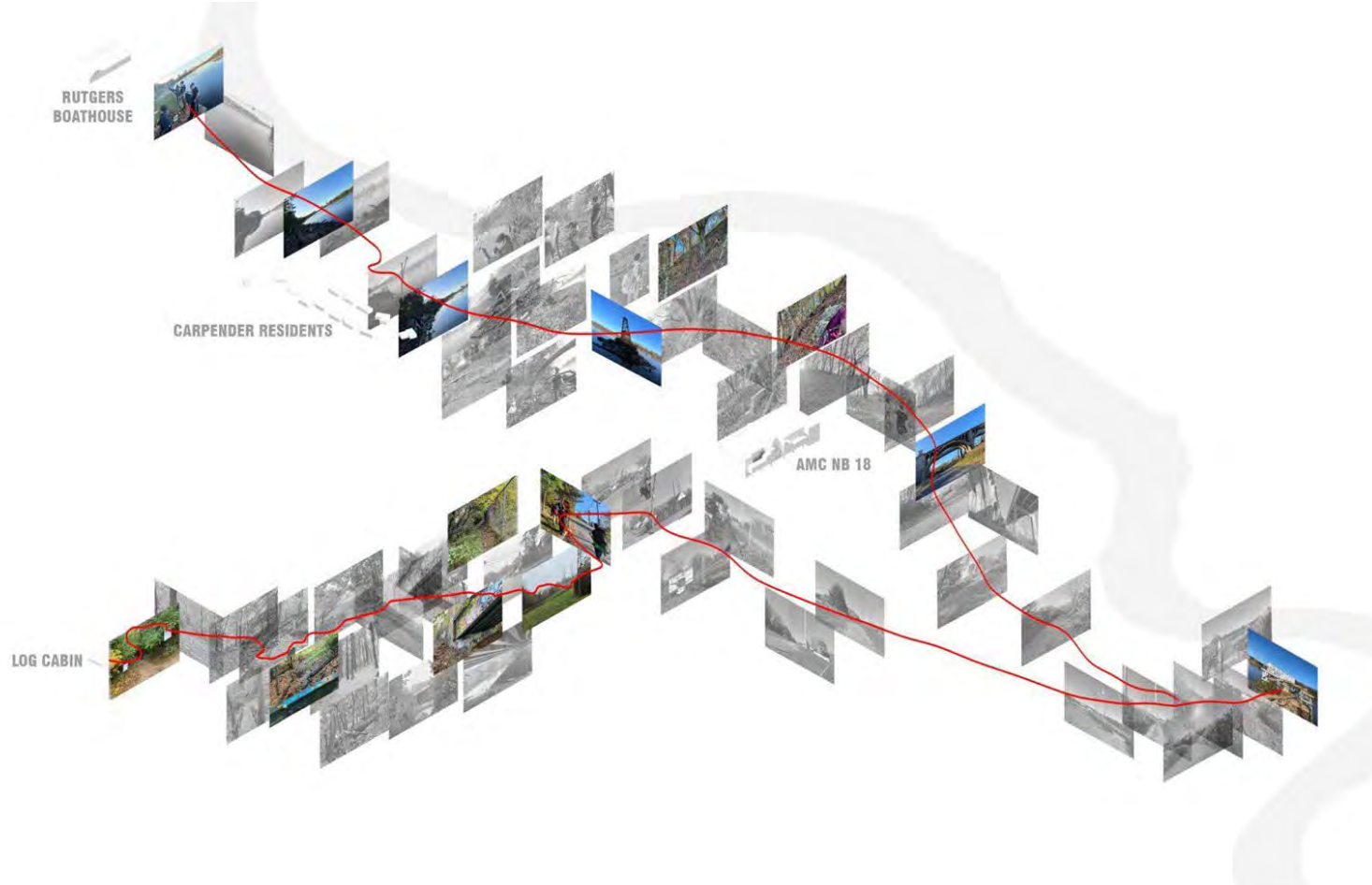


# FIELDWORK: TRAVERSING THE SITE





# FIELDWORK: TRAVERSING THE SITE



# SWOT ANALYSIS

40°29'25.09"N, 74°24'48.66"W

40°29'25.44"N, 74°24'57.77"W

40°29'13.07"N, 74°25'33.52"W

40°29'21.85"N, 74°24'21.12"W

40°29'23.35"N, 74°23'59.85"W

40°29'1.56"N, 74°24'46.51"W

40°29'6.90"N, 74°24'45.97"W

40°29'21.09"N, 74°24'02.20"W

40°28'11.50"N, 74°24'18.99"W

40°28'55.58"N, 74°24'49.23"W

40°28'41.87"N, 74°25'02.23"W

40°28'32.76"N, 74°25'07"W

EASY

HARD

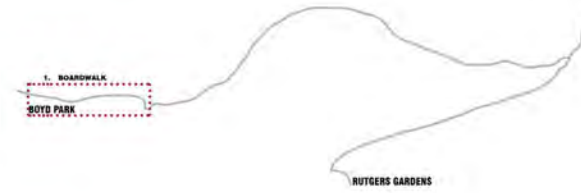
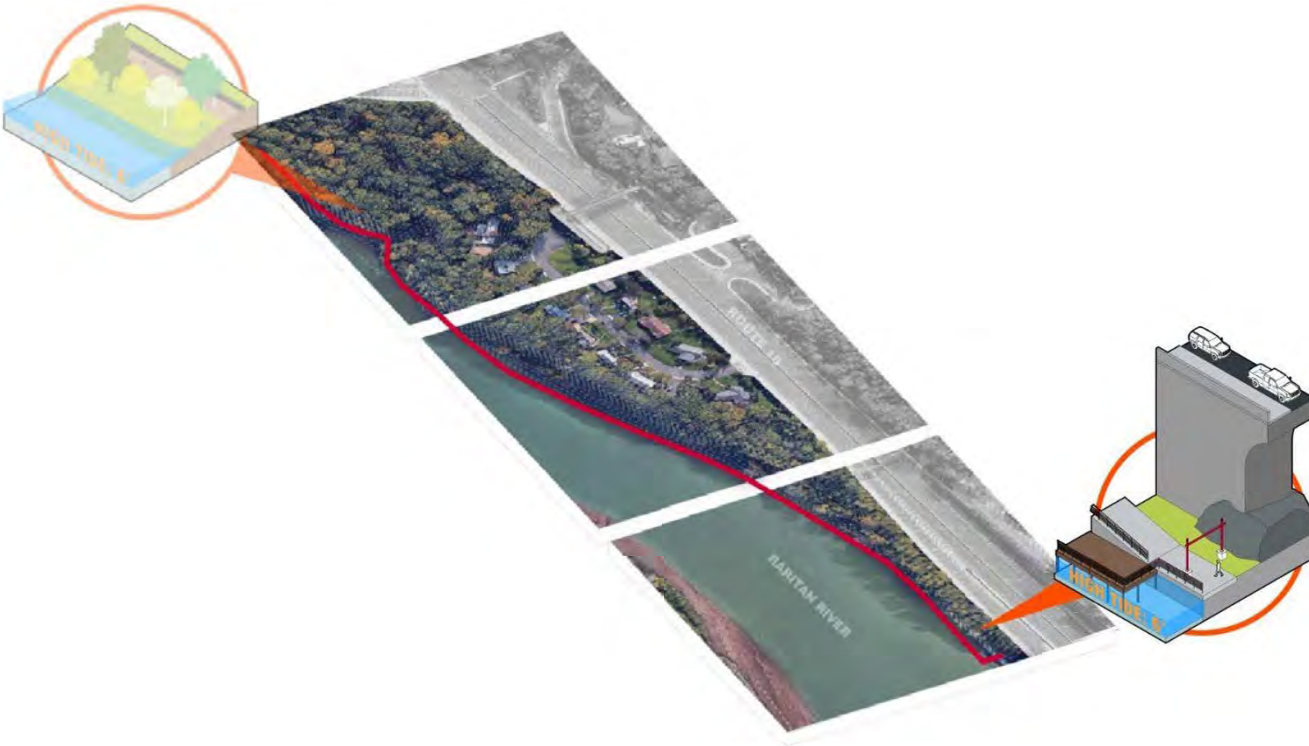
- Views of the river
- Only pedestrian connection

- Undefined path
- Steep slopes

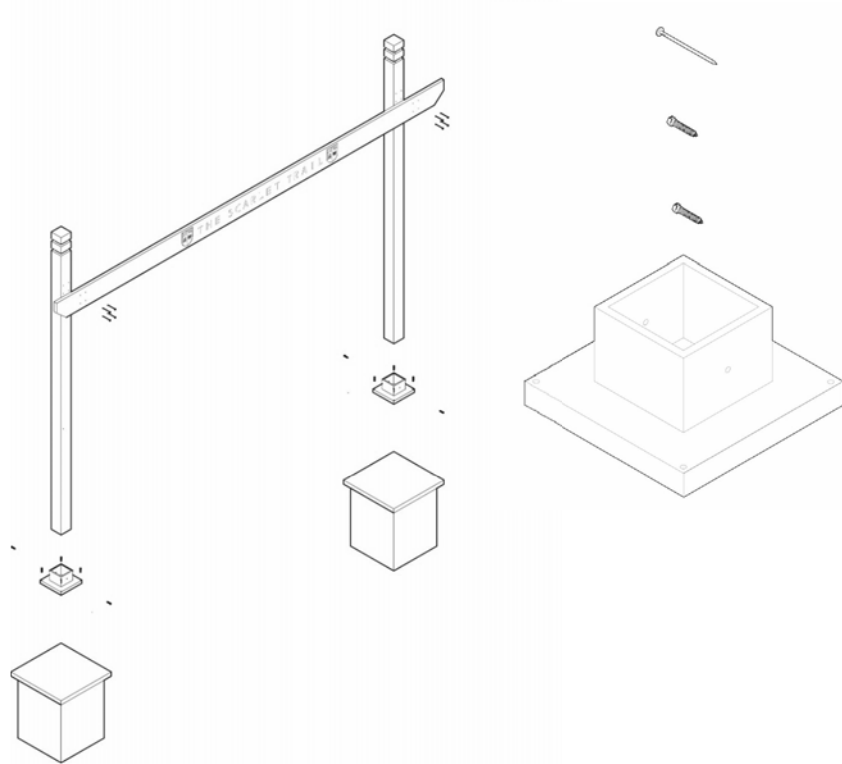
- Sites to enhance views
- Bring people closer to water

- Route 1
- Residential areas

# A NEW BEGINNING



# A NEW BEGINNING TYPOLOGIES AND SOLUTIONS

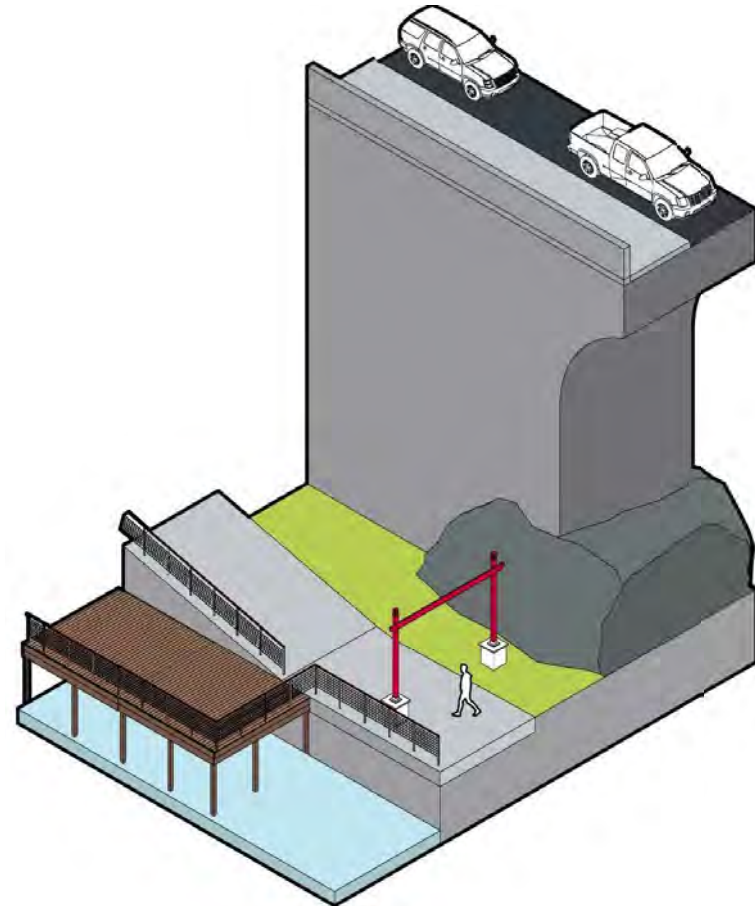


**20D NAILS x 8**

**1/2" STEEL LAG BOLT x 8**

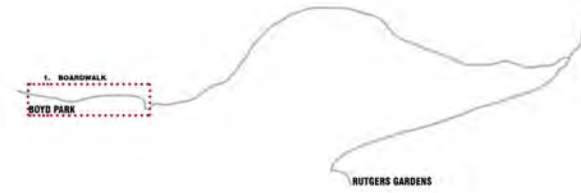
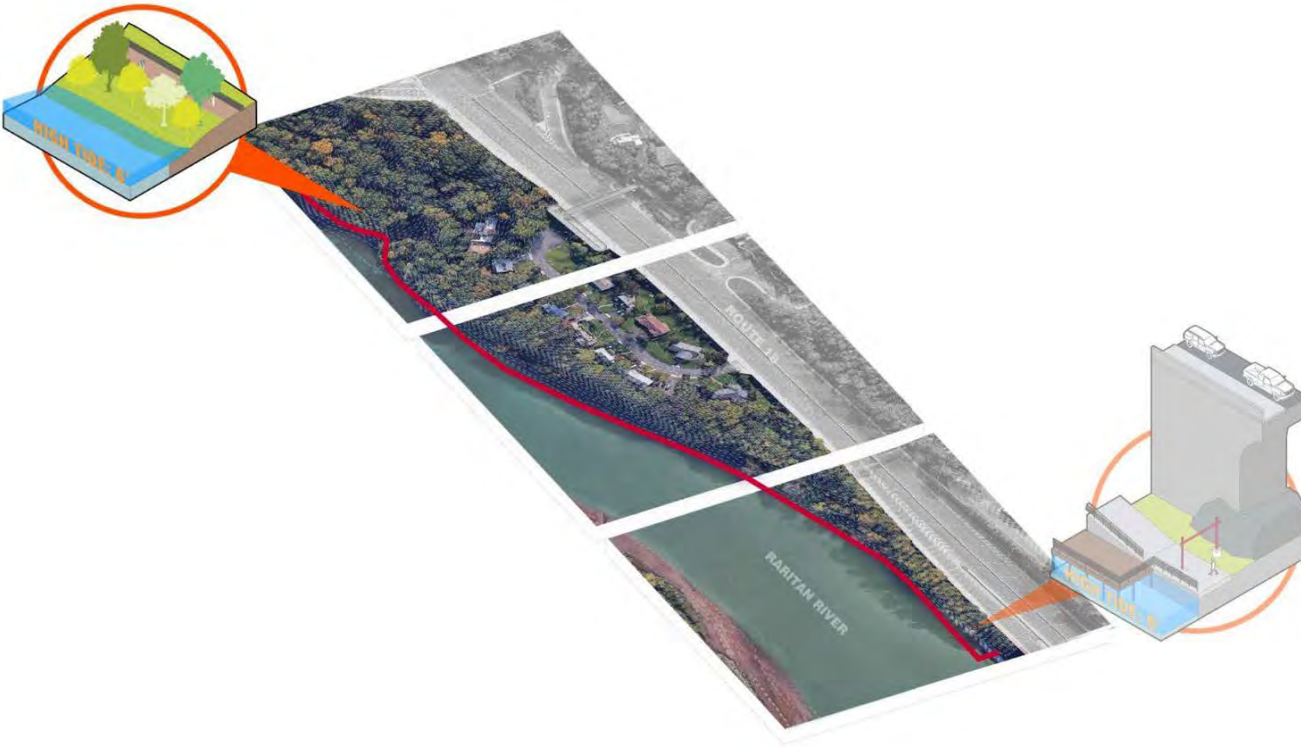
**CONCRETE ANCHORS x 2**

**STEEL POST ANCHOR x 2**



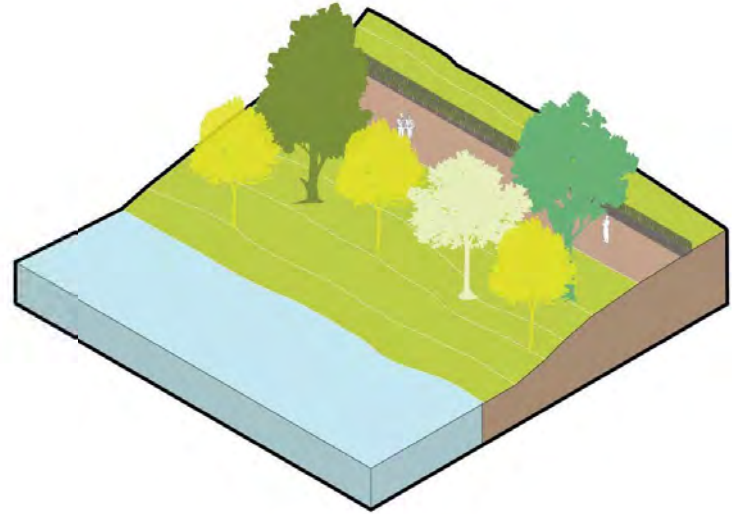
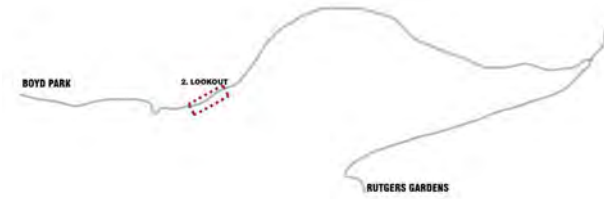
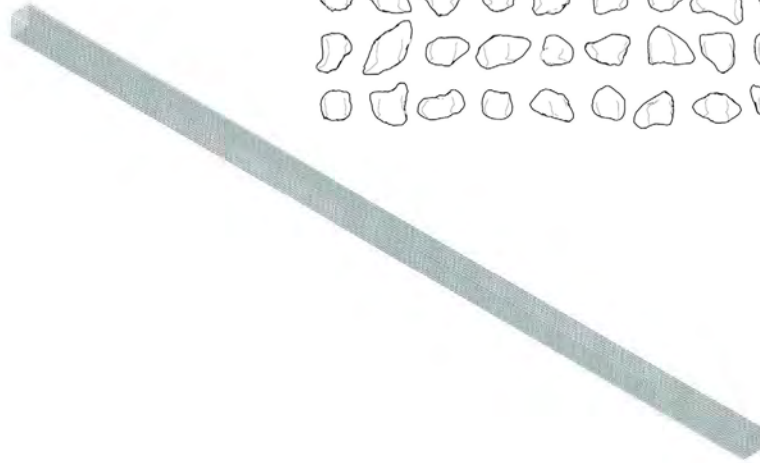
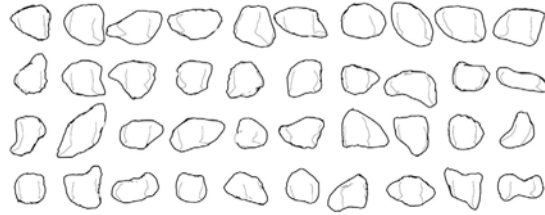


# A NEW BEGINNING

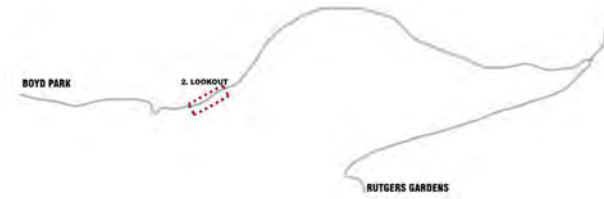
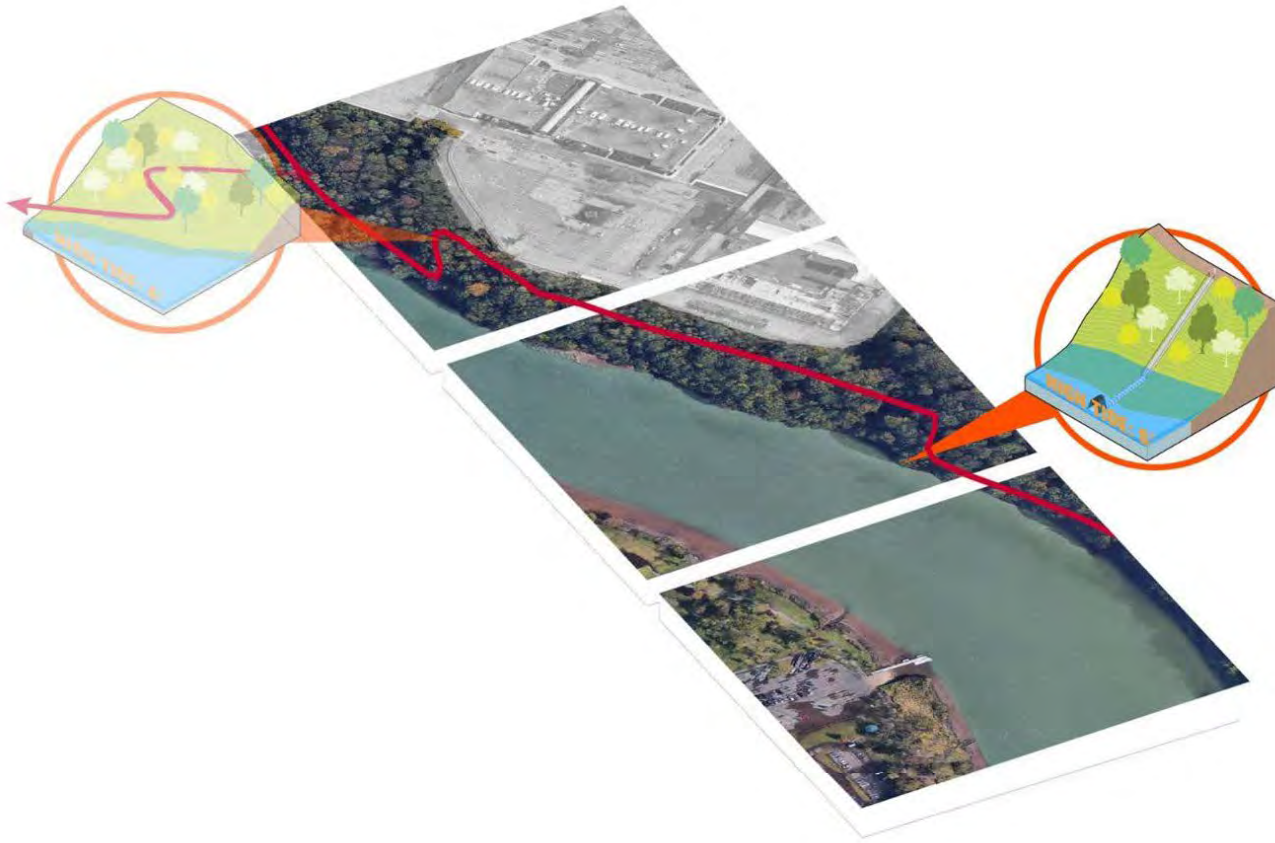


# A NEW BEGINNING

## TYPESLOGIES AND SOLUTIONS



# THE LOOKOUT



GLIMPSES OF RIVER



STEEP SLOPES



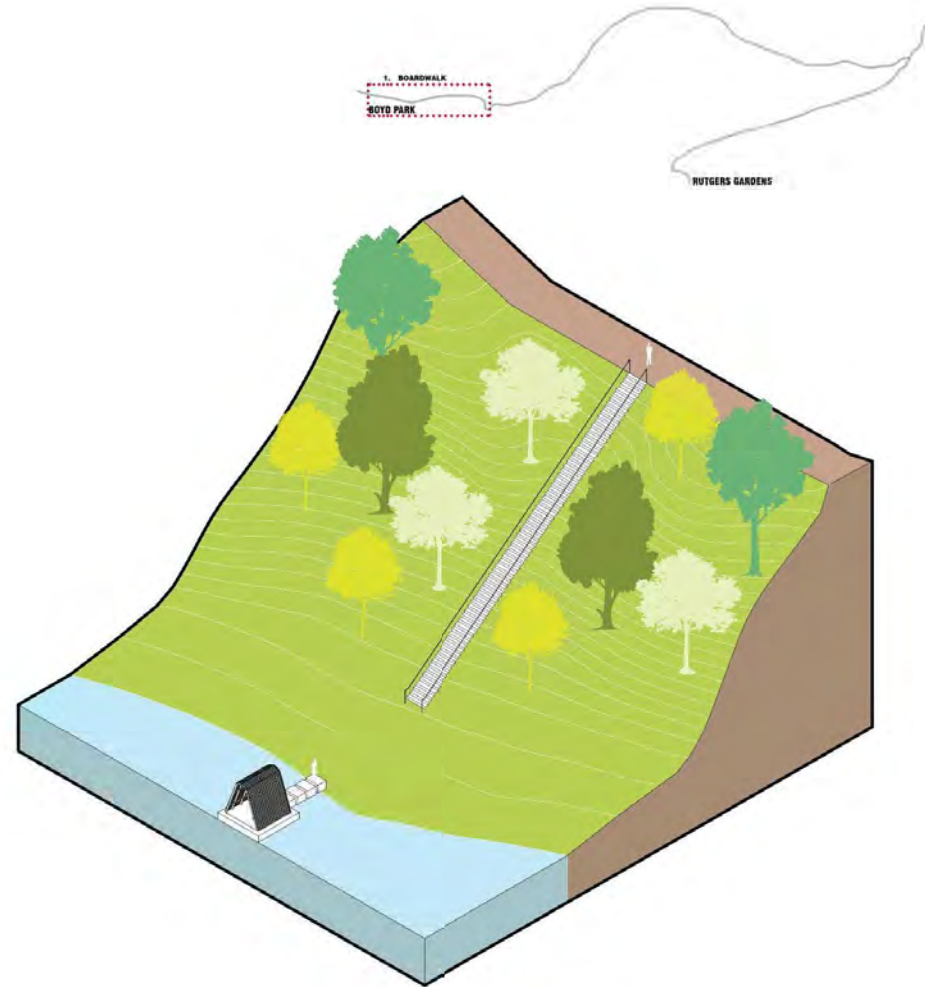
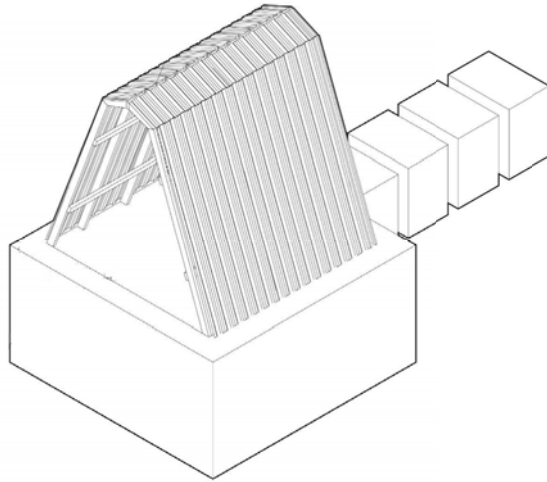
OLD RELIC ON WATER



DESIRED PATHWAYS

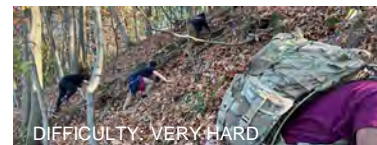
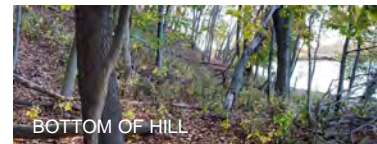
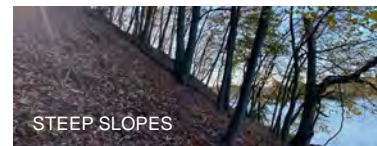
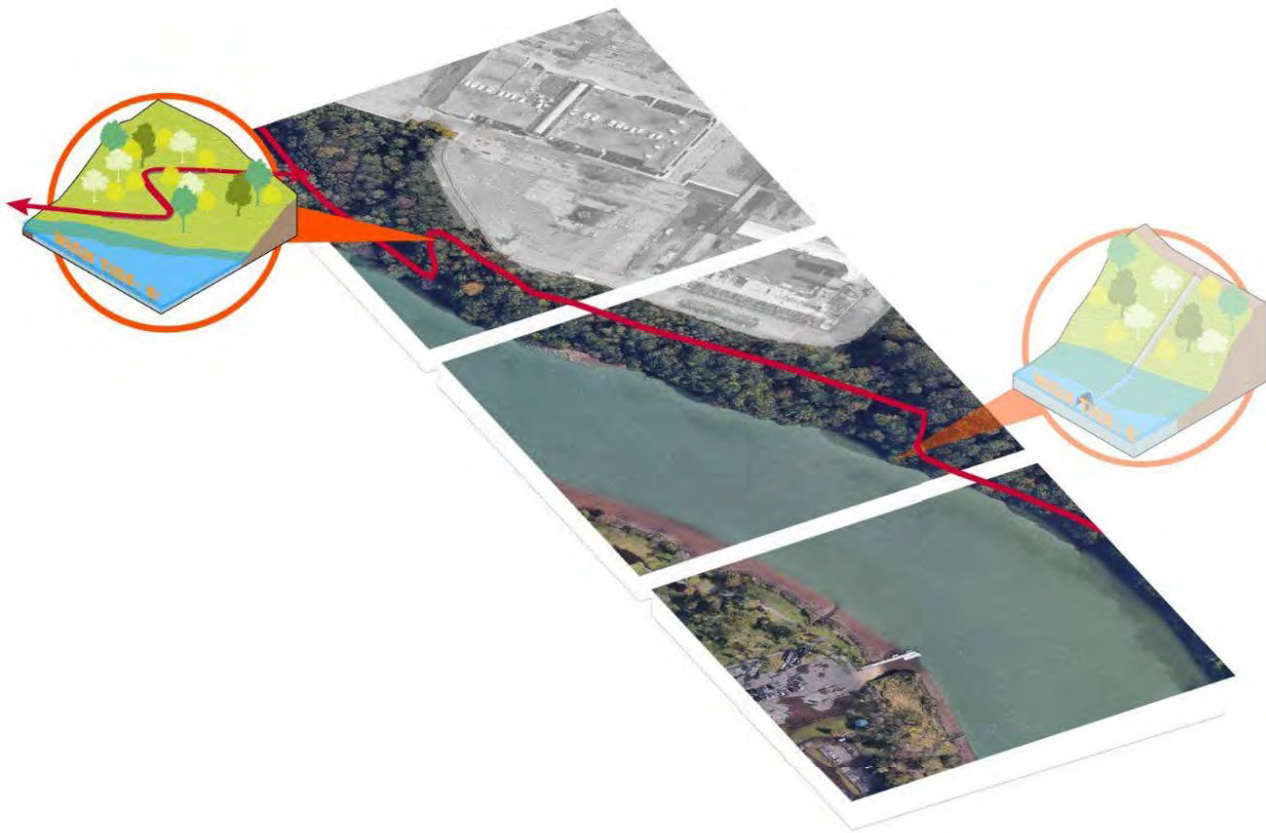
# THE LOOKOUT

## TYPESLOGIES AND SOLUTIONS



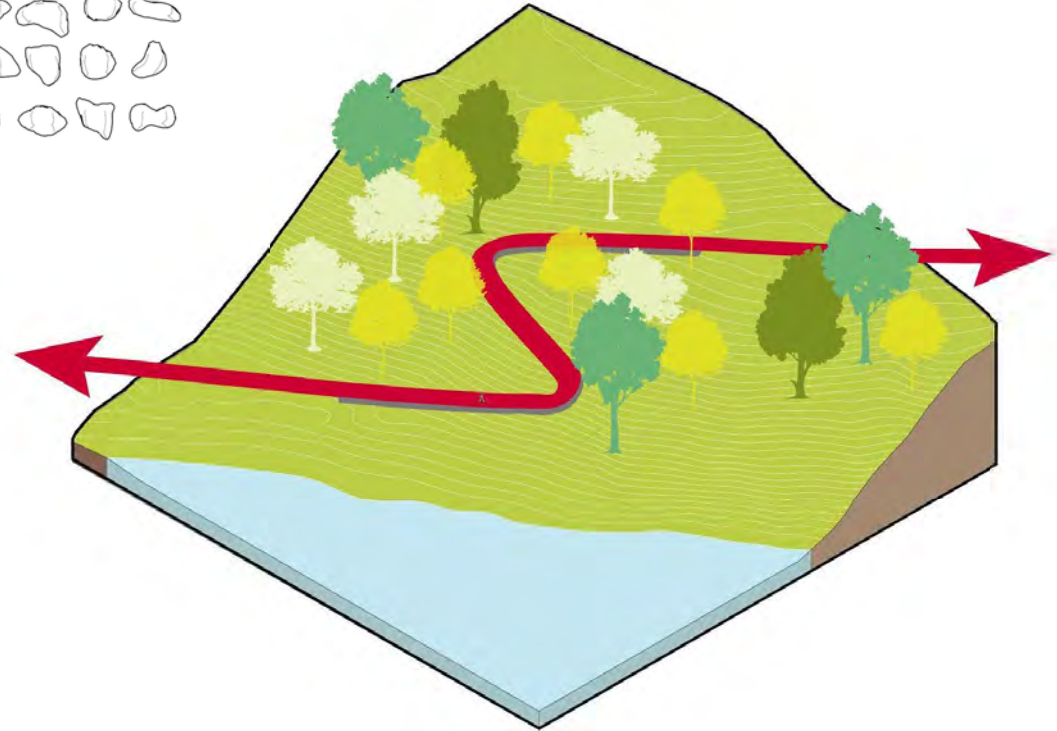
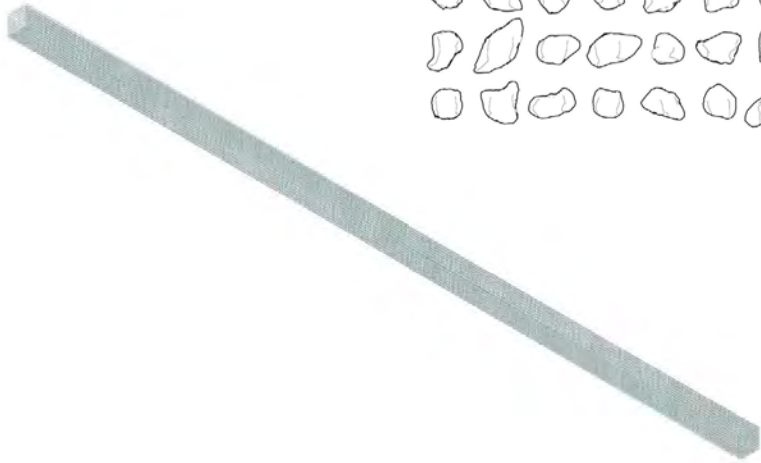


# STONE HILL

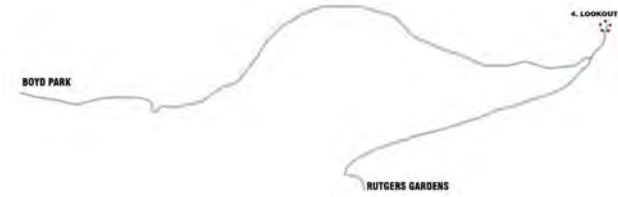
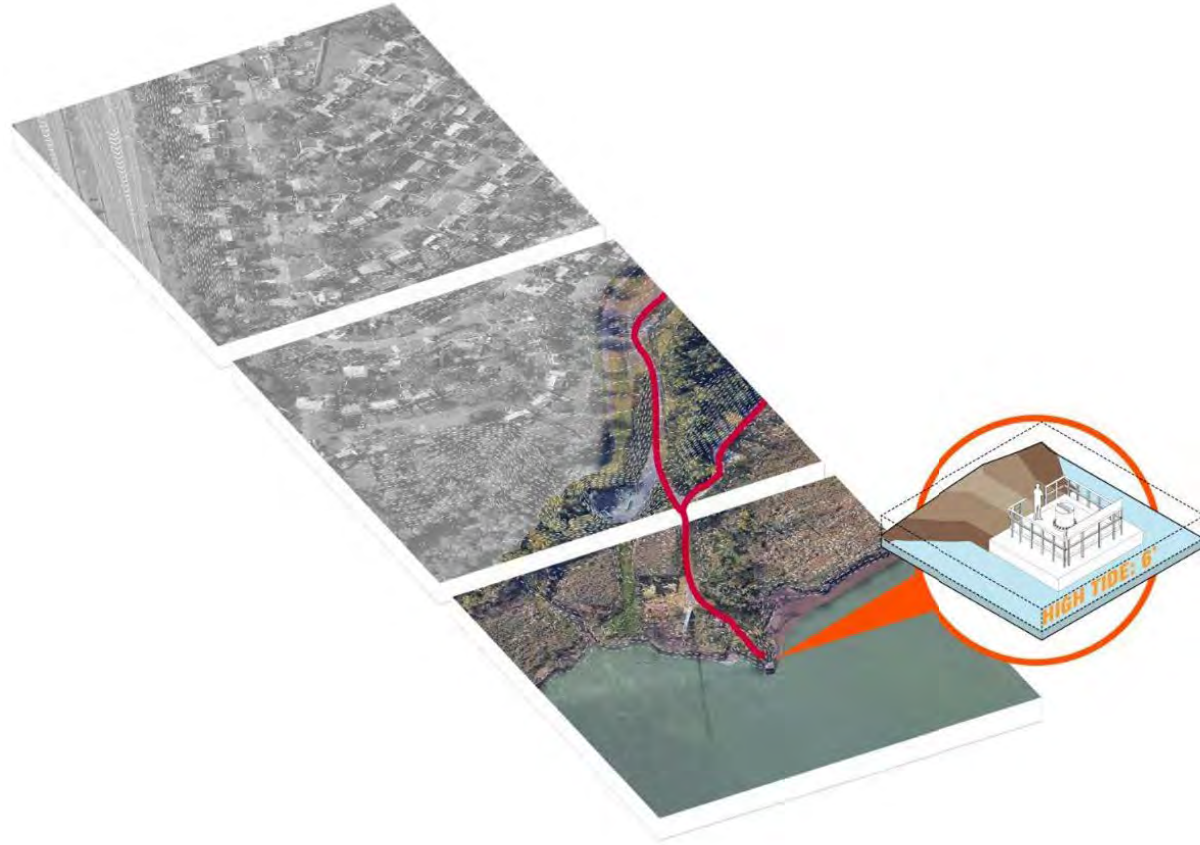


# STONE HILL

## TYPES AND SOLUTIONS



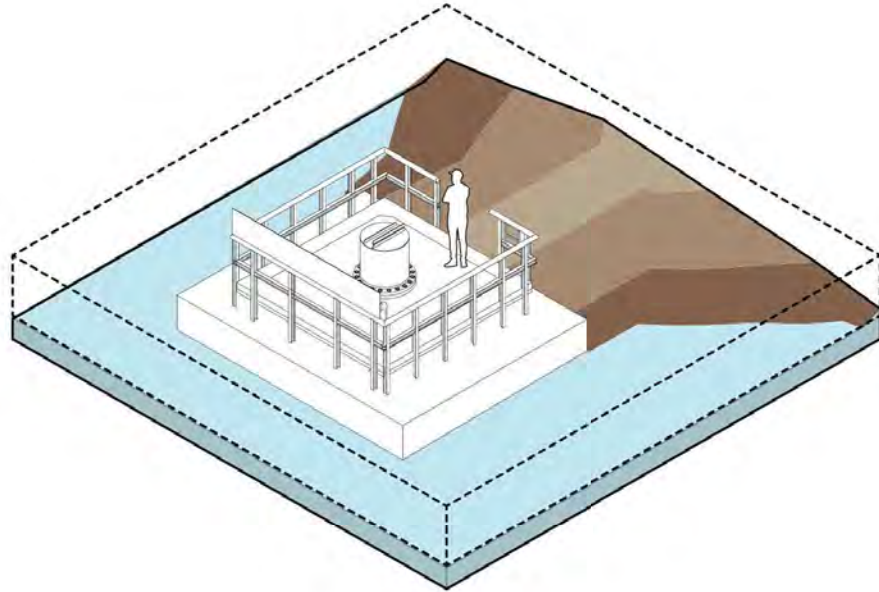
# PIEZOMETER STATION



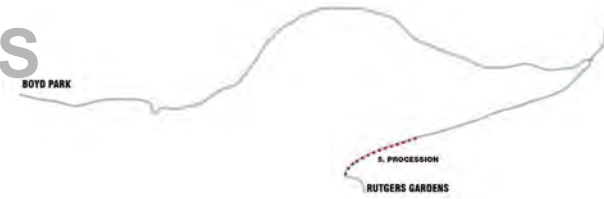
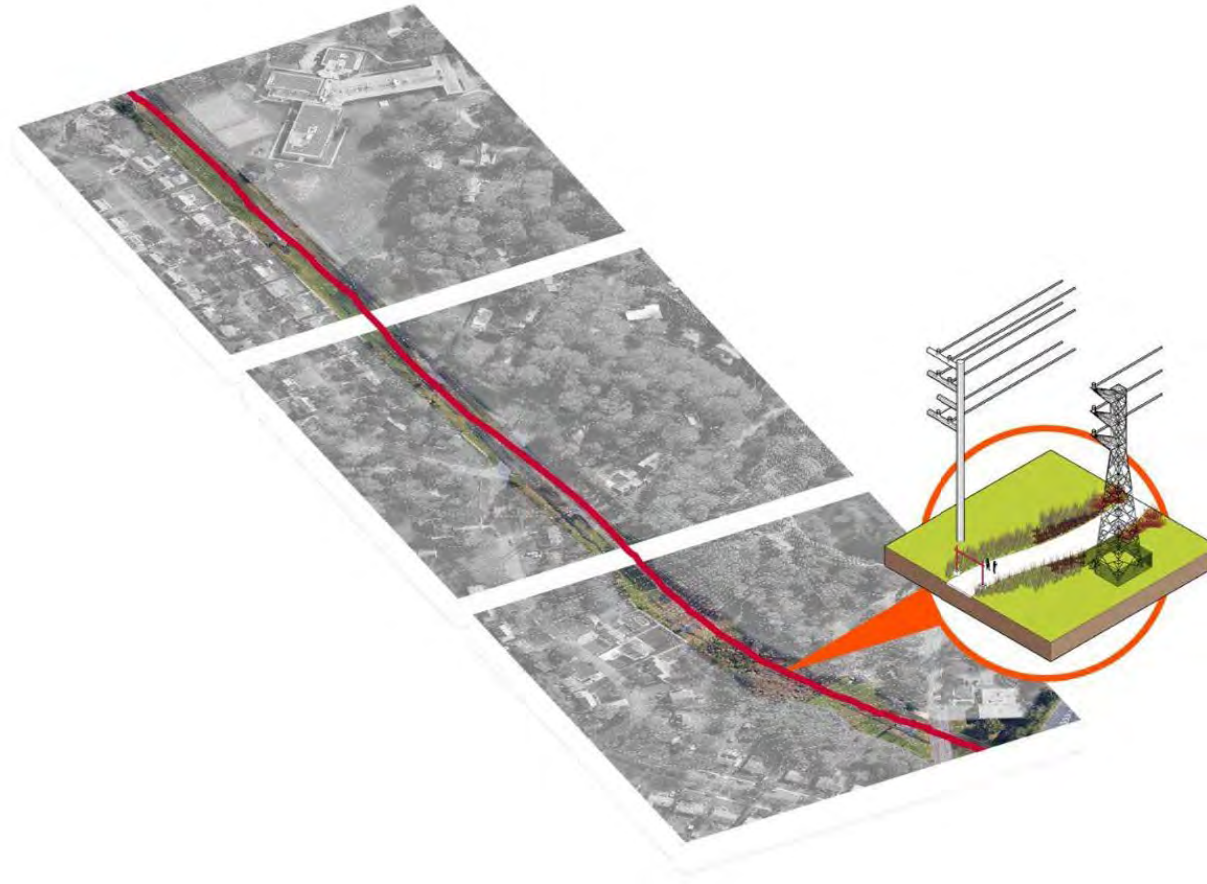


# PIEZOMETER STATION

## TYPES AND SOLUTIONS

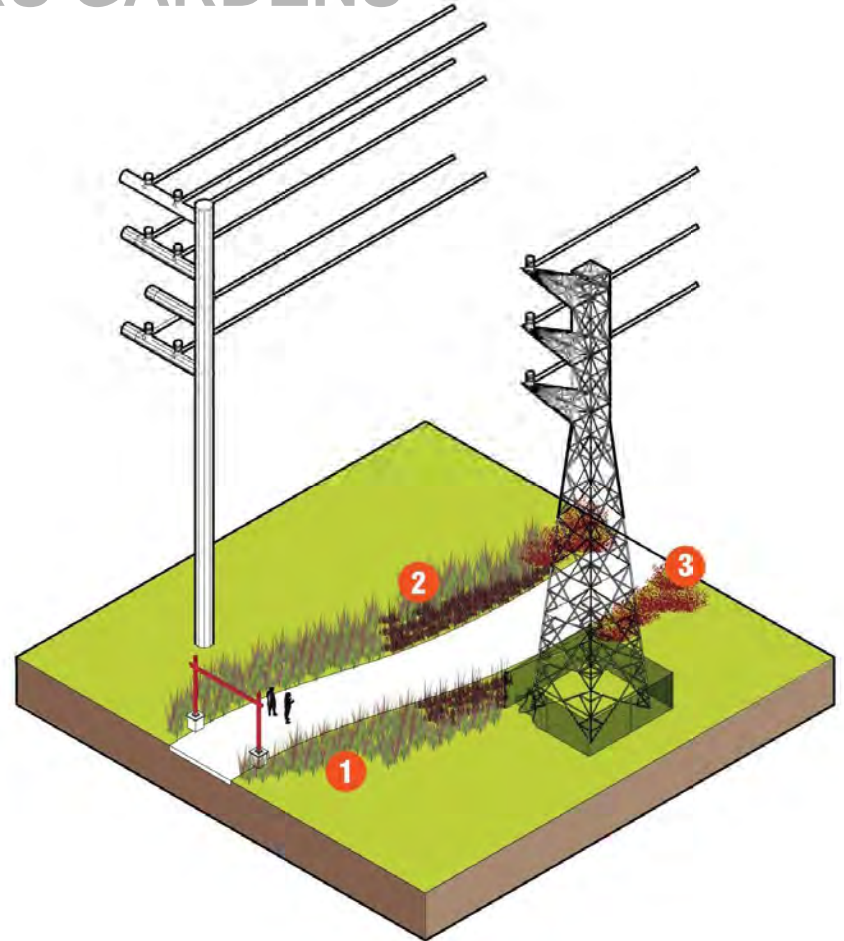


# PROCESSION TO RUTGERS GARDENS



# PROCESSION TO RUTGERS GARDENS

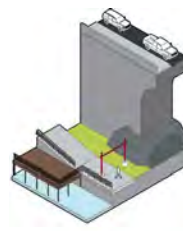
## TYPOLOGIES AND SOLUTIONS







OPPORTUNITY FOR NEW ENTRANCE



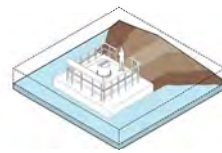
INACCESSIBLE



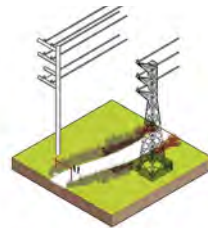
STEEP SLOPES



ENGAGEMENT OPPORTUNITY

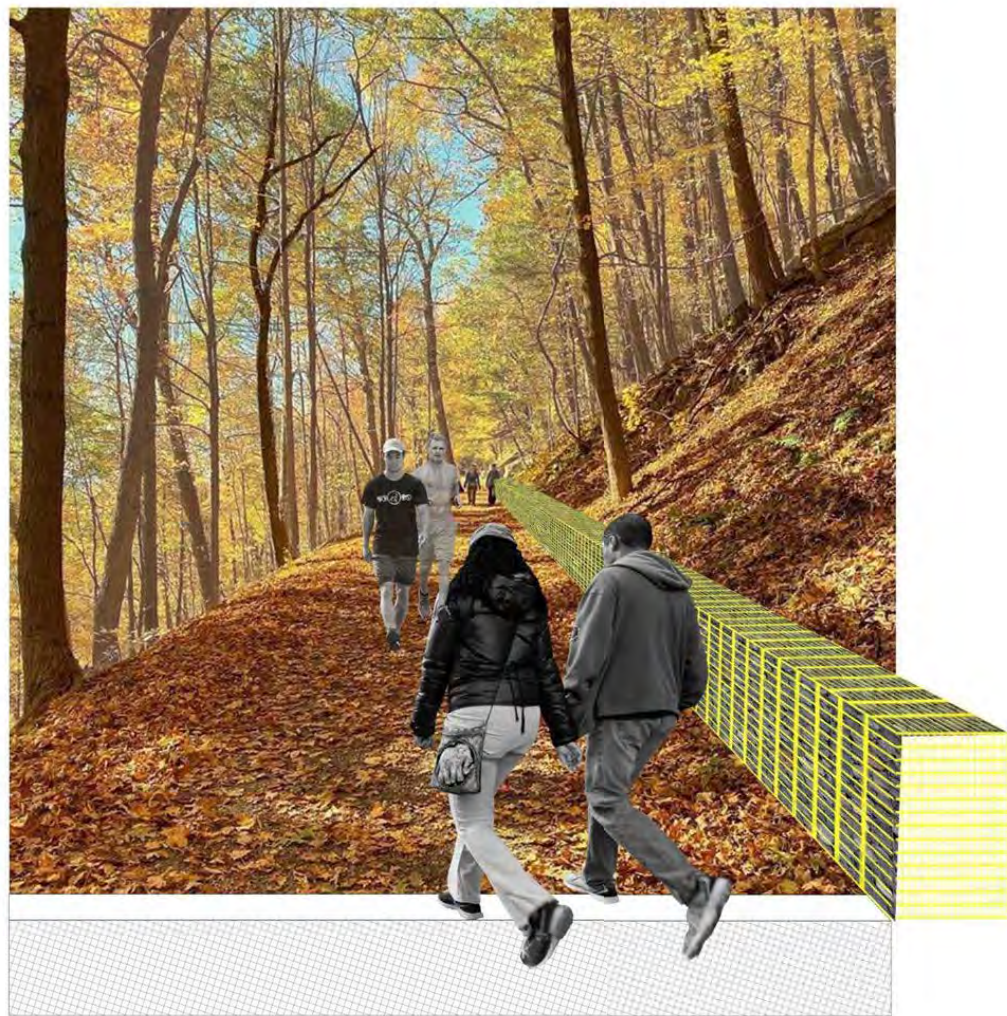


UNDEFINED PATH





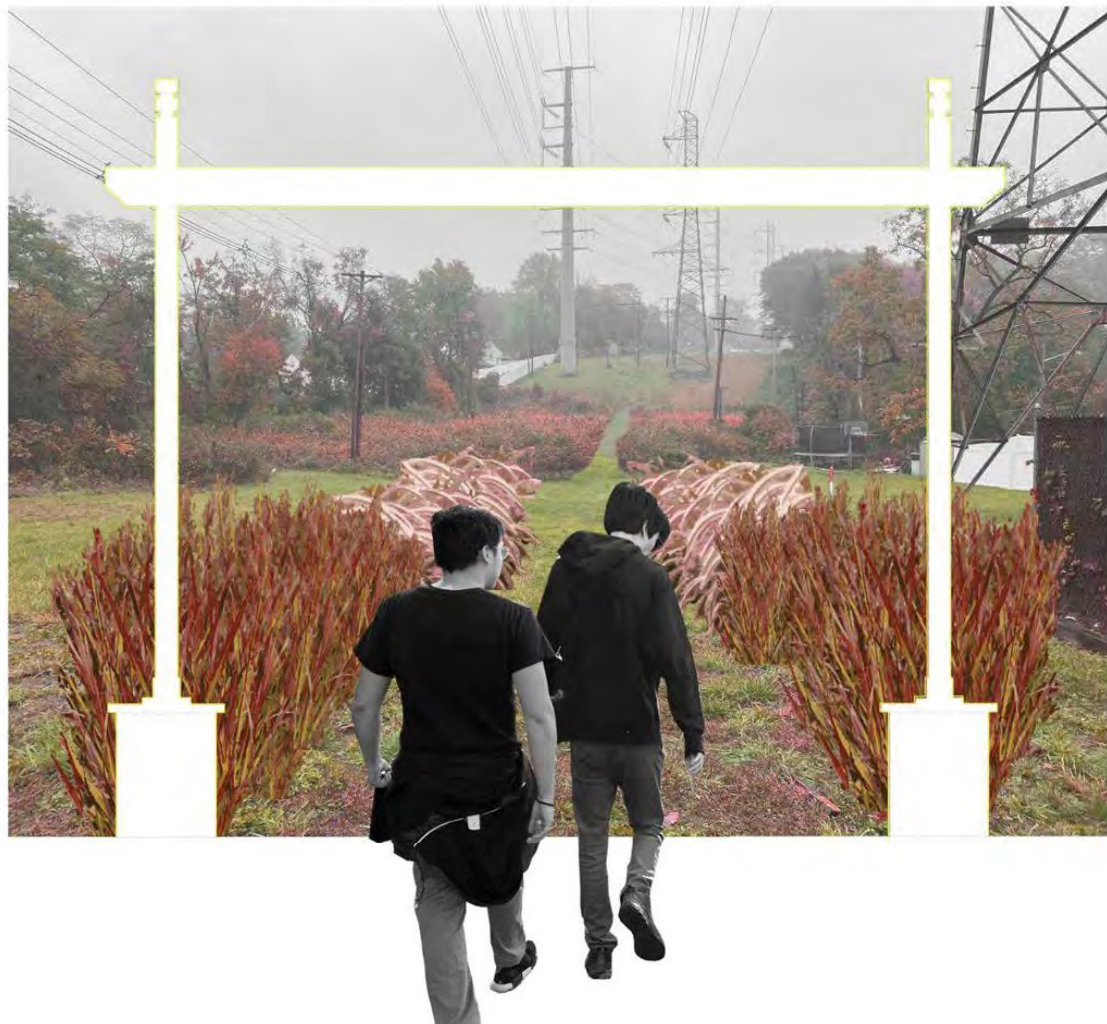






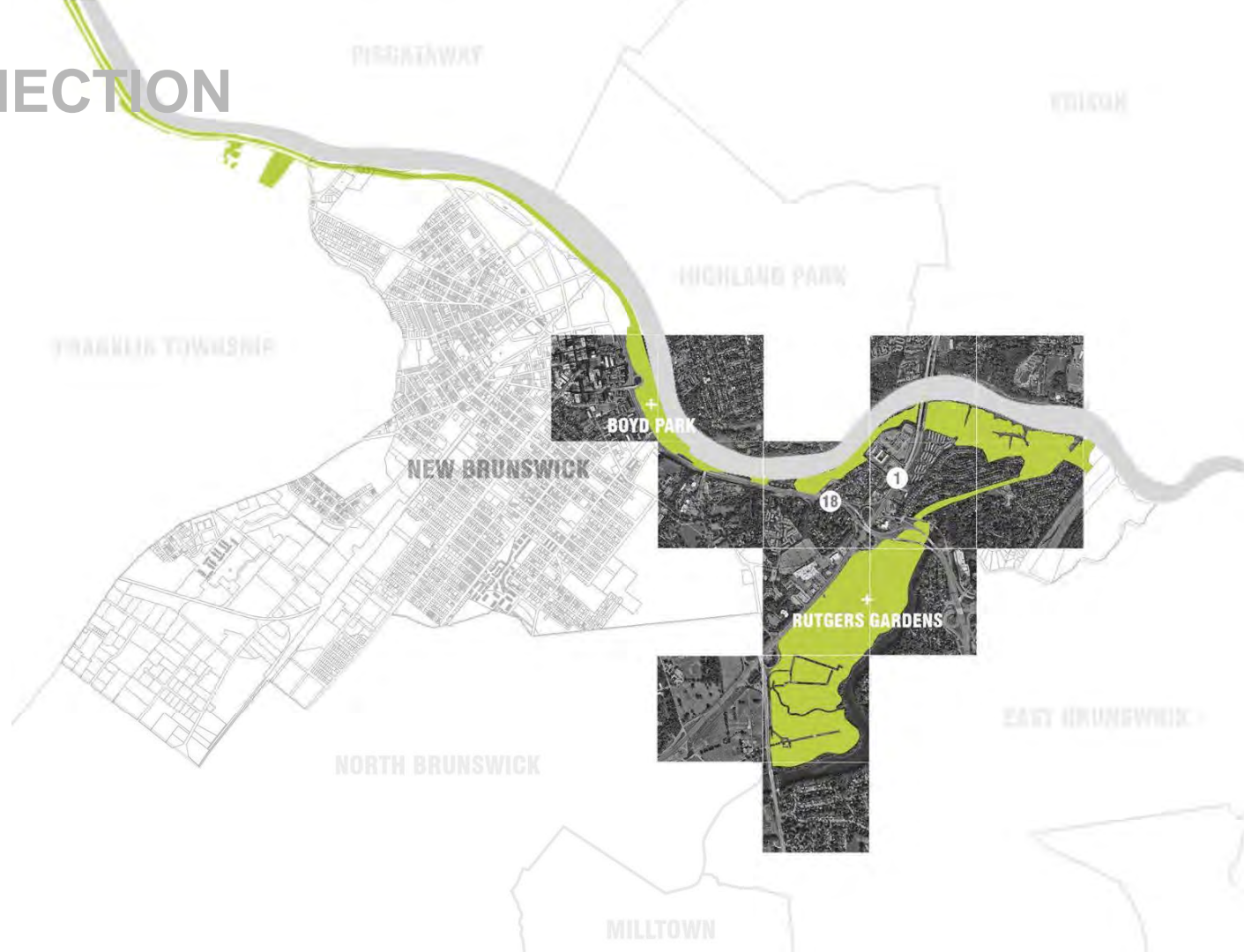








# A NEW CONNECTION



# CONCLUSION

- Will add **3.87 miles** to the **77.3-mile-long** state trail
- Adding **180 acres** to the existing **70,000 acres** of state park
- Creates a more **interconnected** landscape experience
- Enhances **natural beauty** of the state and creates a more **unified** trail system
- Connects **Rutgers** to several places all over NJ
- Pedestrian connection from NJ to **Pennsylvania**



