



PUBLIC LAND, PUBLIC PLACES

ENVIRONMENTAL ANALYSIS FOR EDUCATIONAL AWARENESS, LANDSCAPE LITERACY AND APPRECIATION

ALEXIS SERIDO

ACKNOWLEDGEMENTS

ADVISORY COMMITTEE

FRANK GALLAGHER - ADVISOR

HOLLY NELSON - COMMITTEE MEMBER

VINCENT JAVET - COMMITTEE MEMBER

KATHLEEN JOHN-ALDER - COMMITTEE MEMBER

ADDITIONAL THANK YOU TO:

RICHARD ALOMAR - GRADUATE PROGRAM DIRECTOR

LAURA LAWSON - EXECUTIVE DEAN

WOLFRAM HOEFER - COLLOQUIUM INSTRUCTOR

MYLA ARONSON - DIRECTOR, HUTCHESON MEMORIAL FOREST

CHRIS CROSBY - LAND MANAGER, HUTCHESON MEMORIAL FOREST

JASON GRABOSKY - INSTRUCTOR

STEVEN KRISTOPH - INSTRUCTOR

RICHARD LATHROP - FACULTY DIRECTOR, LIVI. ECO-PRESERVE

MICHELLE MARTEL - UNIT COMPUTING SPECIALIST, DEPT. OF LA

DAVID TULLOCH - INSTRUCTOR

DAVID SMITH - INSTRUCTOR

ANETTE FREYTAG - INSTRUCTOR

CAITLIN VENEZIA AND THE RUTGERS GARDENS STAFF

A VERY SPECIAL THANK YOU TO:

MY PARENTS, SISTER AND DOG HONEY

MY FRIENDS AND COHORT



OVERVIEW

 PERSONAL RELATIONSHIP & FIELD RELEVANCE

 INTRODUCTION TO SITES

 RESEARCH QUESTIONS

 PERIODS AND PROCESSES OF SIGNIFICANCE

 ESTABLISHMENT OF THEMES

 THEMATIC APPLICATION

 CASE STUDIES - PINELANDS SITES

 SPATIAL DISTRIBUTION OF RUTGERS SITES

 ENLARGEMENT - SITE SIZE COMPARISON

 HELYAR WOODS

- SURVEY ANALYSIS
- SITE AMENITIES AND USES
- CONCEPT PLANNING

 LIVINGSTON ECO-PRESERVE

- SURVEY ANALYSIS
- SITE AMENITIES AND USES
- CONCEPT PLANNING

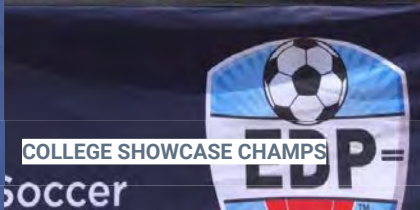
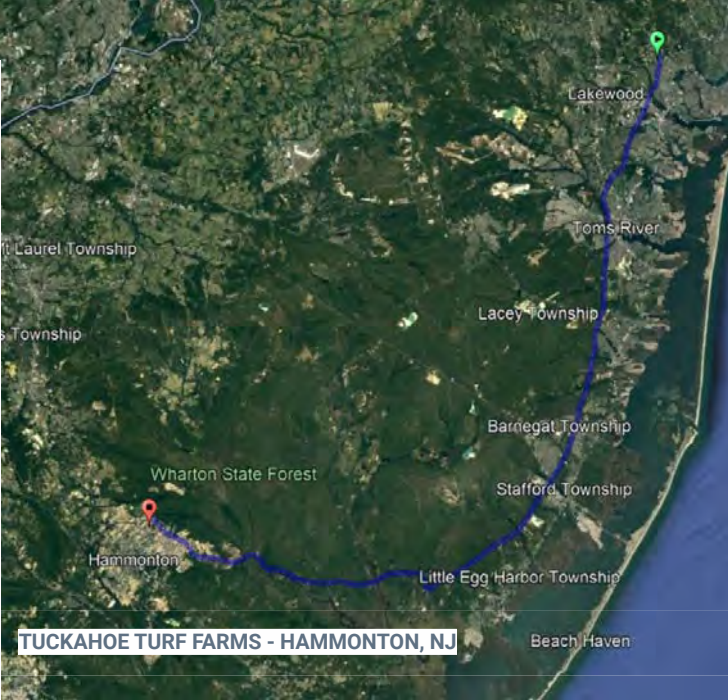
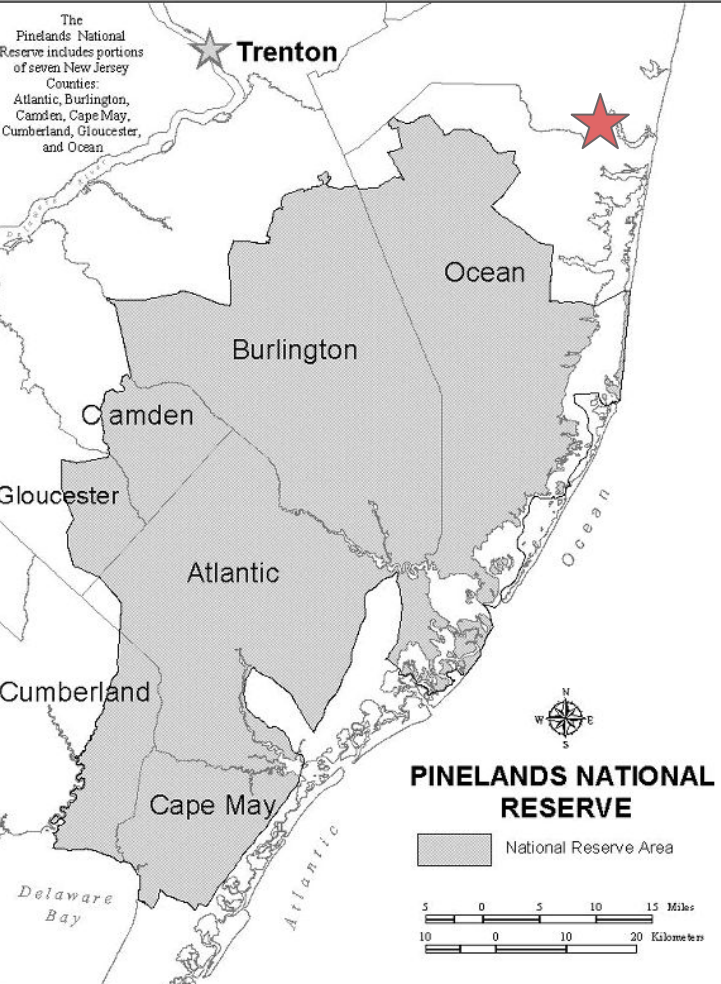
 HUTCHESON MEMORIAL FOREST

- SURVEY ANALYSIS
- SITE AMENITIES AND USES
- CONCEPT PLANNING

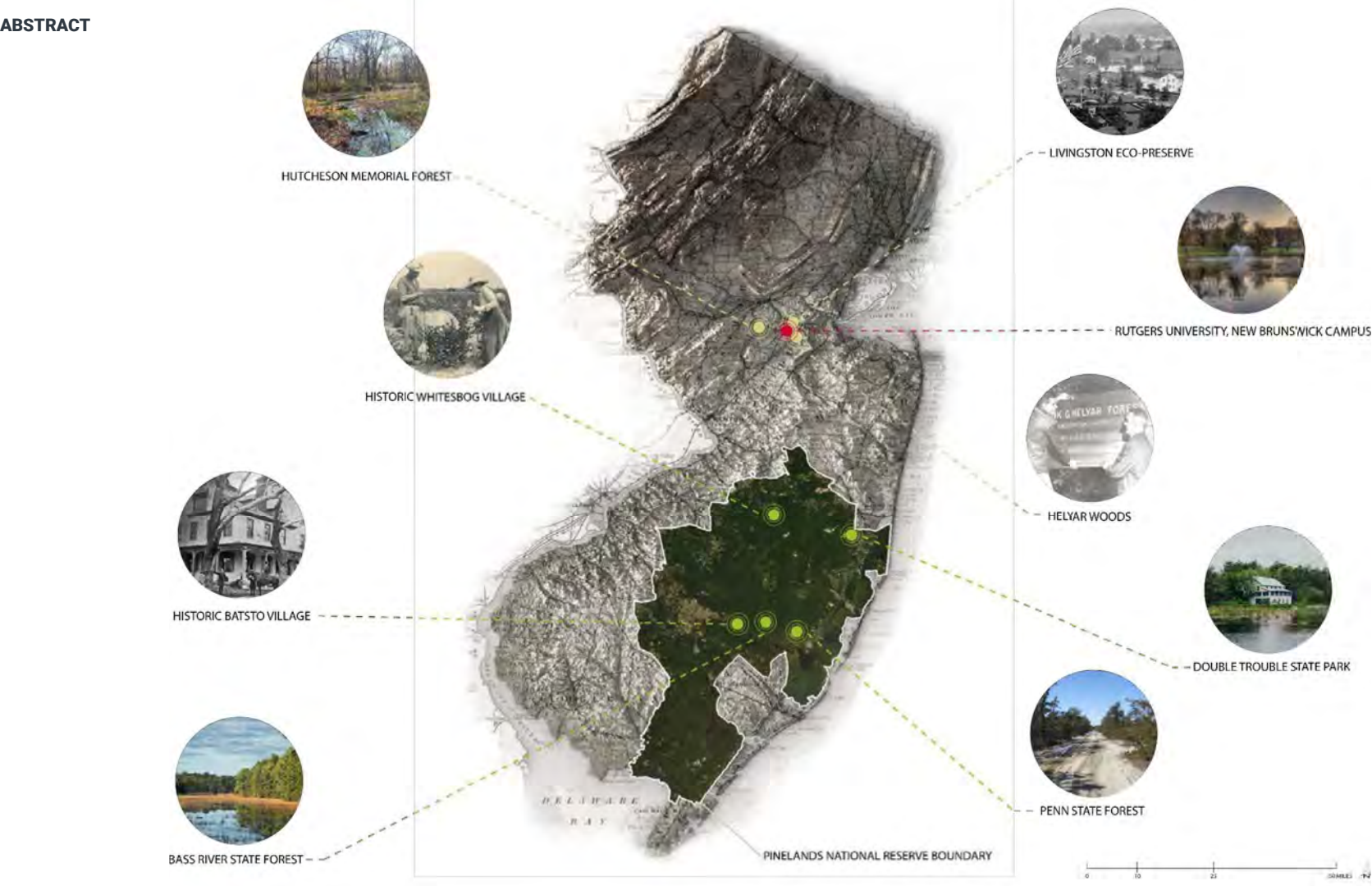
 CUMULATIVE SITE COMPARISON

 CONCLUSION

PERSONAL RELATIONSHIP & RESEARCH RELEVANCE TO THE FIELD



ABSTRACT





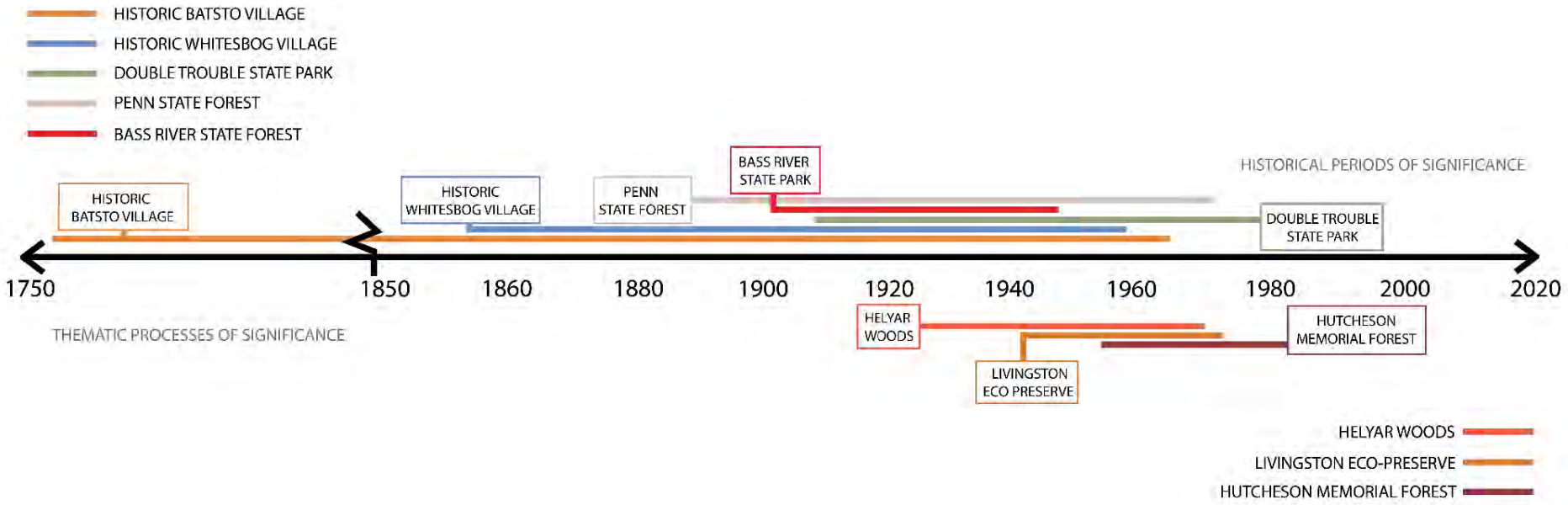
HOW ARE PUBLIC LANDS DEVELOPED AND WHAT ARE THE PRIMARY THEMATIC CONCEPTS DELIVERED TO THE PUBLIC?



CAN RUTGERS UNIVERSITY LAND, WHICH ARE ALSO LANDS TO THE STATE OF NEW JERSEY, DEVELOP SIMILAR THEMATIC CONCEPTS AND IMPROVE PUBLIC ACCESS TOWARDS THE ENHANCEMENT OF ENVIRONMENTAL, HISTORIC, AND SCIENTIFIC LITERACY?



CAN RUTGERS UNIVERSITY LANDS BETTER DEFINE THEIR MESSAGE AND DELIVER IT TO THE PUBLIC FACILITATING AN ENHANCED UNDERSTANDING OF THE STATE'S NATURAL AND HISTORIC RESOURCES AND THE ROLE THE UNIVERSITY PLAYS IN PROTECTING, UNDERSTANDING, AND CONVEYING THEIR IMPORTANCE?



ESTABLISHMENT OF THEMES



LANDSCAPE
AWARENESS

- SITES TO SERVE AS
POTENTIAL FOR
INCREASED
ENVIRONMENTAL
AWARENESS AND
LANDSCAPE APPRECIATION

EXPERIENCED
THROUGH



RECREATION

- ABILITY TO EXPERIENCE
AND EXPLORE THE
LANDSCAPE IN VARIOUS
WAYS
 - WALKING, FISHING,
CYCLING, CANOEING

DEMONSTRATED BY:



LANDSCAPE
ECOLOGY

- SITE SPECIFIC PLANT
COMMUNITIES
- EVIDENCE OF SUCCESSION OR
TRANSITION
- UNIQUE PLANT COMMUNITY
QUALITIES



INDUSTRY

- LAND RESOURCES AND
PROFITABILITY
- INDUSTRIAL LAND USE AND
ITS IMPACTS TODAY
- NATURAL RESOURCE VALUE



HISTORY

- SITE RESTORATION
EFFORTS
- PREVIOUS OCCURRENCES
WITH PRESENT DAY
IMPACTS
- HISTORICAL FIGURES OR
EVENTS



WATER

- WATER AS SITE BOUNDARY
- PRESENCE, FREQUENCY,
INTENSITY AND IMPACT ON
LAND USE
- AFFECT ON PLANT MATERIAL
AND LAND USES



POLICY

- LAND USE REGULATIONS
- SURROUNDING AREA
INFLUENCE ON STUDIED SITES
- LAND OWNERSHIP AND
VALUES

THEMATIC APPLICATION

CASE STUDIES



— HISTORIC BATHING VILLAGE



CORNELL TROUBLE STATE PARK



- HISTORIC WHITEDOG VILLAGE



NEW STATE FOREST



BLISS RIVER STATE FOREST

LANDSCAPE
AWARENESS

(9) $\text{X}(\text{OH})_2 + \text{H}^+ \rightarrow \text{X}(\text{OH}) + \text{H}_2\text{O}$

RECREATION



LANDSCAPE



9



9



111

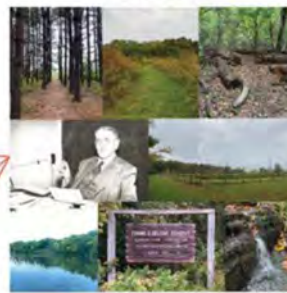


11

SITE THEMATIC ANALYSIS

- SITE VALUES
- INTERSECTION OF LAND USES
- EDUCATIONAL AND RECREATIONAL GOALS
- PHYSICAL REPRESENTATIONS
- INFORMATIONAL STRUCTURES
- EXISTING CHARACTERISTICS AS AREAS FOR FUTURE IMPROVEMENT OPPORTUNITY
- POSSIBILITY FOR EDUCATIONAL, RECREATIONAL, AND EXPERIENTIAL GROWTH

SITE APPLICATION



HILLMAN WOODS, BUTLER'S CANYON



— L'AMBIENTE DI TUTTI I RISTORANTI —



HUTCHINSON MEMORIAL FOREST

CASE STUDIES - PINELANDS SITES



 HUTCHESON MEMORIAL FOREST, FRANKLIN TWP.

 HISTORY
  LANDSCAPE ECOLOGY
  POLICY

 LIVINGSTON ECO-PRESERVE, LIVINGSTON CAMPUS

 HISTORY
  LANDSCAPE ECOLOGY
  WATER

SOMERSET COUNTY

MIDDLESEX COUNTY


 HELYAR WOODS, RUTGERS GARDENS

 HISTORY
  LANDSCAPE ECOLOGY
  WATER




 LIVINGSTON ECO-PRESERVE, LIVINGSTON CAMPUS



 HUTCHESON MEMORIAL FOREST, FRANKLIN TWP.



 HELYAR WOODS, RUTGERS GARDENS



ENLARGEMENT - SITE SIZE COMPARISON



HELYAR WOODS, RUTGERS GARDENS



LANDSCAPE
ECOLOGY

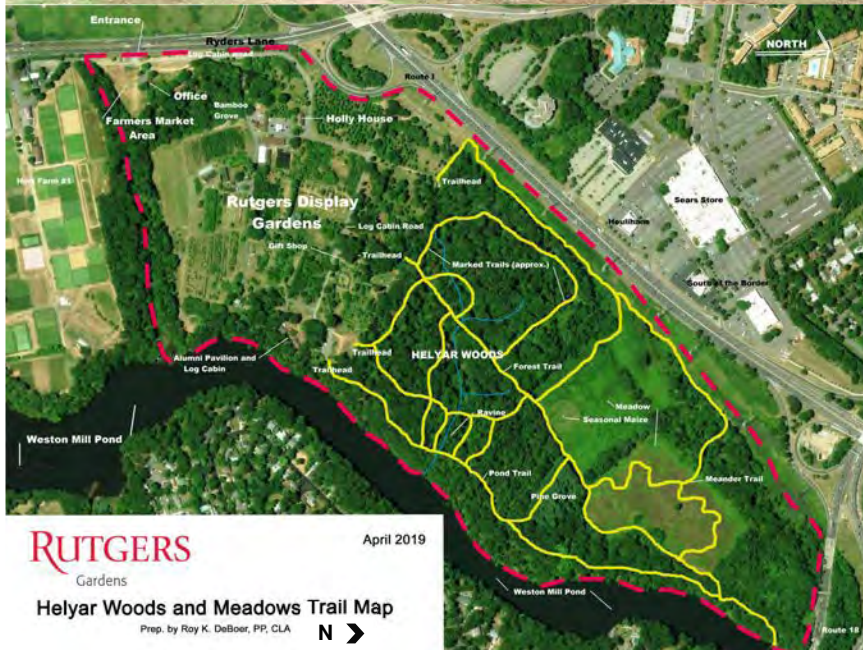


WATER



HISTORY

- **FRANK G. HELYAR**
 - LAND VALUES AND DESIRE
- **EXISTING TRAIL SYSTEM**
 - MARKED, DIFFICULT TO FOLLOW
- **HELYAR'S USERS**
 - STUDENTS, FACULTY, STAFF AND LOCAL COMMUNITY
- **ACCESSIBILITY FROM RUTGERS CAMPUS**
 - INDIRECT AND UNSAFE
- **URBAN FOREST ECOLOGY OF HELYAR WOODS**
 - URBAN LAND USE IMPACTS





1888 SURVEY



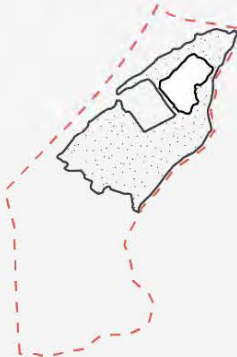
1954 SURVEY



2019 SURVEY



2023 AERIAL





HELVAR WOODS, RUTGERS GARDENS



RESEARCH PLOTS



RAVINE



MAIN ENTRANCE

ROUTE 18

ROUTE 1



MEANDERING TRAIL



PINE FOREST STRUCTURE



PINE GRID FOREST



WESTONS MILL POND

HELYAR WOODS, RUTGERS GARDENS



LANDSCAPE ECOLOGY - RAVINE EDGE

- ACCESS BY EXISTING PATHS
- DEMONSTRATION OF TRANSITIONAL URBAN FOREST PHASE
- VISIBLE IMPACT OF INCREASED STORM WATER PRESENCE AND EROSION



HISTORY - ENTRANCE

- EXISTING SIGNAGE AS BASE POINT
- OPPORTUNITY FOR INFORMATION IMPLEMENTATION
- ABILITY TO INCREASE HISTORICAL KNOWLEDGE UPON ENTRY TO TRAIL SYSTEM



WATER - RAVINE & WESTON'S MILL POND INTERSECTION

- OBSERVATION OF IMPACTS OF INCREASED STORM WATER PRESENCE AND INTENSITY
- INCREASED RATE OF EROSION ON BRUNSWICK SHALE
- LOCATION OF RAVINE TO WESTON'S MILL POND ESTUARY



LIVINGSTON ECO-PRESERVE, LIVINGSTON CAMPUS



- **CAMP KILMER**
 - MILITARY PRESENCE, LAND USE IMPACTS
- **EXISTING TRAIL SYSTEM**
 - WELL DEVELOPED AND MAINTAINED
 - HOST OF RECREATIONAL EVENTS
- **LIVI'S USERS**
 - STUDENTS, FACULTY, STAFF AND LOCAL COMMUNITY
- **ACCESSIBILITY FROM RUTGERS CAMPUS**
 - DIRECT AND SAFE
- **URBAN FOREST ECOLOGY**
 - PRINCETON HYDRO PROJECT
- **WILDLIFE MANAGEMENT PLAN**
 - DEER MANAGEMENT AND INFLUENCE



Rutgers University Ecological Preserve and Natural Teaching Area

TRAIL MAP





1888 SURVEY



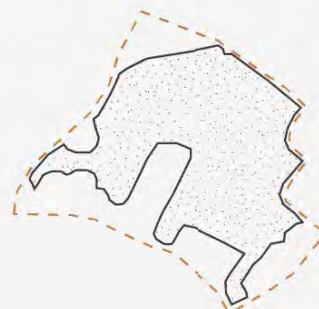
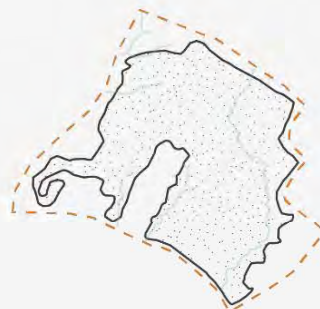
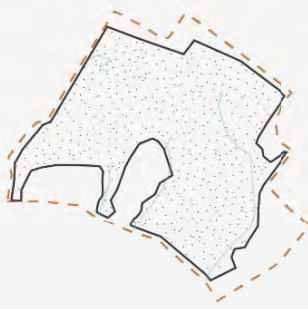
1954 SURVEY

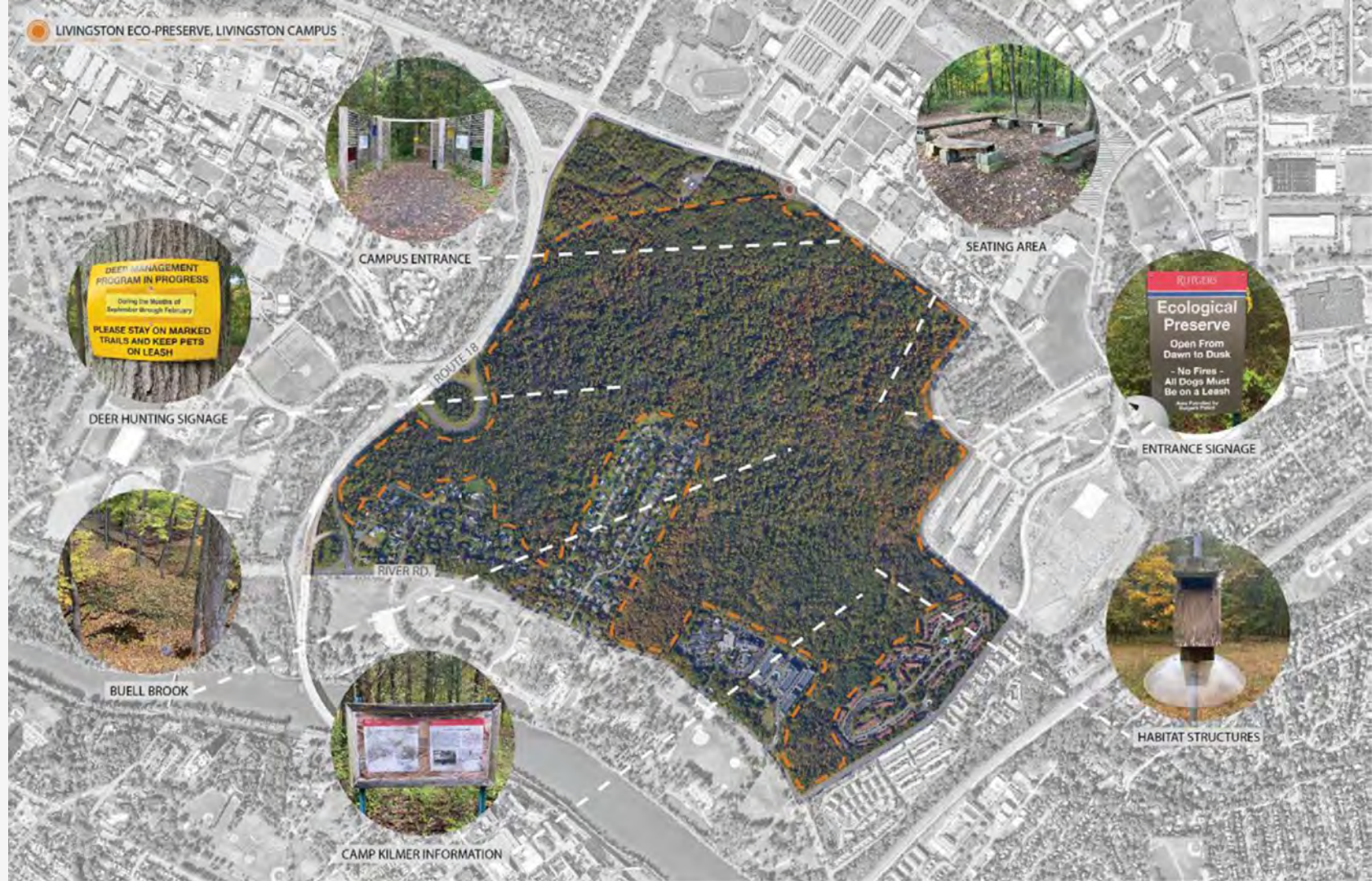


2019 SURVEY



2023 AERIAL





CAMPUS ENTRANCE



SEATING AREA



DEER HUNTING SIGNAGE



ENTRANCE SIGNAGE



BUELL BROOK



CAMP KILMER INFORMATION



HABITAT STRUCTURES

LIVINGSTON ECO-PRESERVE, LIVINGSTON CAMPUS





HUTCHESON MEMORIAL FOREST, FRANKLIN TWP.



HISTORY



POLICY

LANDSCAPE
ECOLOGY

- **RESEARCH AS A FOCAL POINT**
 - LAND DEDICATED TO RESEARCH AND PRESERVATION
- **EXISTING TRAIL SYSTEM**
 - POORLY MARKED, DIFFICULT TO NAVIGATE
- **HMF'S USERS**
 - RESEARCHERS, PERMITTED USERS
- **ACCESSIBILITY FROM RUTGERS CAMPUS**
 - INDIRECT, TRANSPORTATION REQUIRED
 - NOT ALWAYS OPEN TO THE PUBLIC
- **URBAN FOREST ECOLOGY**
 - MAINTENANCE OF RESEARCH INTEGRITY
- **WILDLIFE MANAGEMENT PLAN**
 - DEER MANAGEMENT AND INFLUENCE





HUTCHESON MEMORIAL FOREST, FRANKLIN TWP.



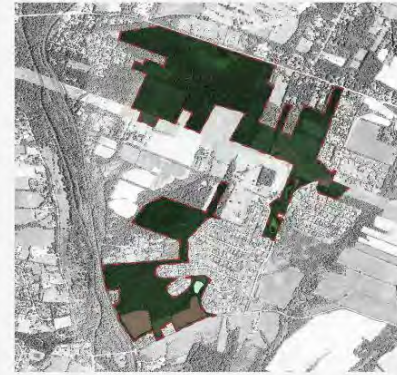
1888 SURVEY



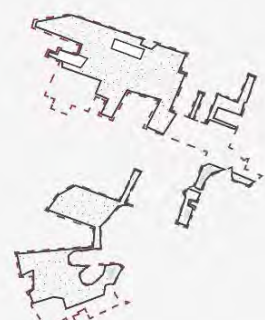
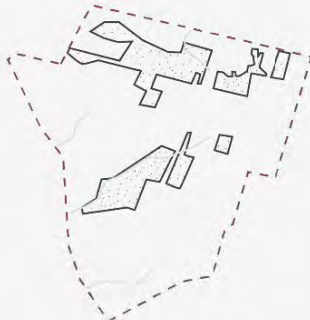
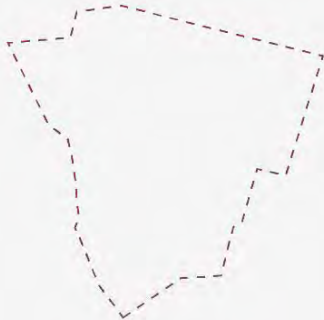
1954 SURVEY



2019 SURVEY



2023 AERIAL





ORGANIZED TOURS



EARLY SUCCESSIONAL FIELDS



OLD GROWTH FORESTS



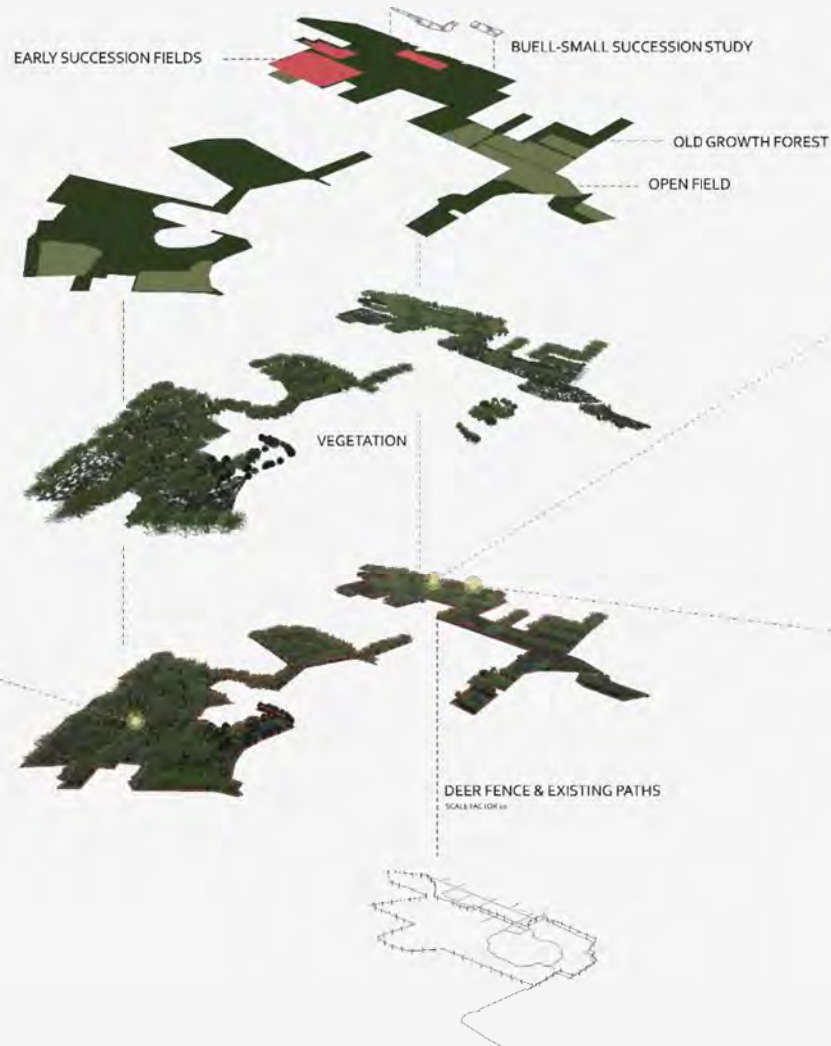
BUELL-SMALL SUCCESSION STUDY



SPOOKY BROOK



DEER HUNTING SIGNAGE



HISTORY - FOREST HABITATS

- OPPORTUNITY TO PROVIDE INFORMATION ON PREVIOUS LAND OWNERS AND LAND USE
- HIGHLIGHTING AREAS OF OLD GROWTH FORESTS AND CANOPY GAPS
- ON SITE REPRESENTATION OF SUCCESSION REFORESTATION



POLICY - ENTRANCE

- ADDITIONAL INFORMATION SHOWCASING THE LINK BETWEEN RESEARCH AND POLICY
- OPPORTUNITY TO PROVIDE CONTACT INFORMATION TO SCHEDULE VISITATION AND TOURS
- PROVISION OF RATIONALE FOR EXISTING POLICIES AND THEIR LIMITATIONS



LANDSCAPE ECOLOGY - SUCCESSION STUDIES

- ON SITE EXAMPLES OF ACTIVE RESEARCH EXPERIMENTS
- PRESENCE OF MULTIPLE PLANT AND FOREST COMMUNITY TYPES
- PLOTS AT VARIOUS POINTS OF SUCCESSION GROWTH





● HELYAR WOODS, RUTGERS GARDENS



● LIVINGSTON ECO-PRESERVE, LIVINGSTON CAMPUS



● HUTCHESON MEMORIAL FOREST, FRANKLIN TWP.



AMENITIES

TRAIL SYSTEM

ON CAMPUS
ACCESSIBILITY

DEER MANAGEMENT
PROGRAM

HISTORICAL
SIGNIFICANCE

RESEARCH
OPPORTUNITY

ALWAYS OPEN
TO PUBLIC

VOLUNTEER
OPPORTUNITY

LANDSCAPE
VALUE

