

POCKET PARKS:

Designing a Community Hub for Art, Music, & Play in Sunnyside, Queens

EMILY CHEN



“ How can a courtyard be redesigned as a public pocket park for Sunnyside residents to engage in? ”



COMMITTEE

HOLLY NELSON
Chair

RICHARD ALOMAR
Committee Member

VINCENT JAVET
Committee Member

PROJECT STAKEHOLDERS

MEMO SALAZAR
*Western Queens
Community Land Trust*

JAMES DEFILIPPIS
*Western Queens
Community Land Trust*

CARL ADAIR
*Priest,
Sunnyside Resident*

SUNNYSIDE
COMMUNITY

The Western Queens Community Land Trust (WQCLT)

- Non-profit organization that fights for equitable land use
- Goal is to slow gentrification and promote local economic growth
- Worked with Memo and James during Senior Fall Housing Studio

PURPOSE & RATIONALE

To design a **pocket park** in Sunnyside, Queens that...

- Increases green space
- Aligns with the community's interests
- Creates a community hub for art, music, and play
- Converts a private space to semi-public space

ALL SAINTS
CHURCH

COURTYARD



CHARACTERISTICS OF HIGH-QUALITY PARKS

Urban Land Institute

Five Characteristics of High-Quality Parks (2021)

1 Excellent physical condition

- Well-maintained
- Park amenities are in good condition

2 Universally accessible

- Accessible by people of all ages and abilities
- Pathways
- Lighting

3 Positive experiences for users

- Diverse range of amenities and activities
- Safe and comfortable to spend time in

4 Reflects the culture and interests of the community

- Community-based organizations involved in park operations
- Community input is part of planning and design process

5 Flexible and adaptable to changing circumstances

- Accommodates a variety of uses
- Enhances environmental sustainability and resiliency

HIGH-QUALITY POCKET PARKS

How can pocket parks serve as high-quality green spaces?

- Designed with the community's interests in mind
- Creates an overall safe, welcoming, and enjoyable community hub for all users
- **Improves a community's overall well-being**

High-quality pocket parks promote...



SOCIAL WELL-BEING

- community interaction
- programming
- recreation



MENTAL WELL-BEING

- relaxation
- reduction of stress and anxiety
- safety
- comfortability







ENVIRONMENTAL WELL-BEING

- biodiversity
- reduction of urban heat island effect
- sustainability

CASE STUDY: GREENACRE PARK



MOVEABLE TABLES & CHAIRS



WATERFALL & WATER FEATURES

SHADE STRUCTURES



HONEY LOCUST TREES

PLANTING BEDS & PLANTERS

THESIS DESIGN THEMES

Characteristics
of a high-quality
community hub



SOCIAL
WELL-BEING



MENTAL
WELL-BEING



ENVIRONMENTAL
WELL-BEING

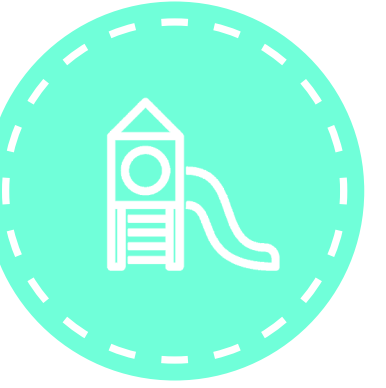
Sunnyside
community
interests



ART



MUSIC



PLAY

SUNNYSIDE INTERESTS: ART, MUSIC, & PLAY



MURALS



ART FAIRS & EXHIBITS



ART CLASSES



STREET PERFORMANCES



FESTIVALS & EVENTS



JAM SESSIONS



PLAYGROUNDS



ACTIVE PLAY



CREATIVE PLAY



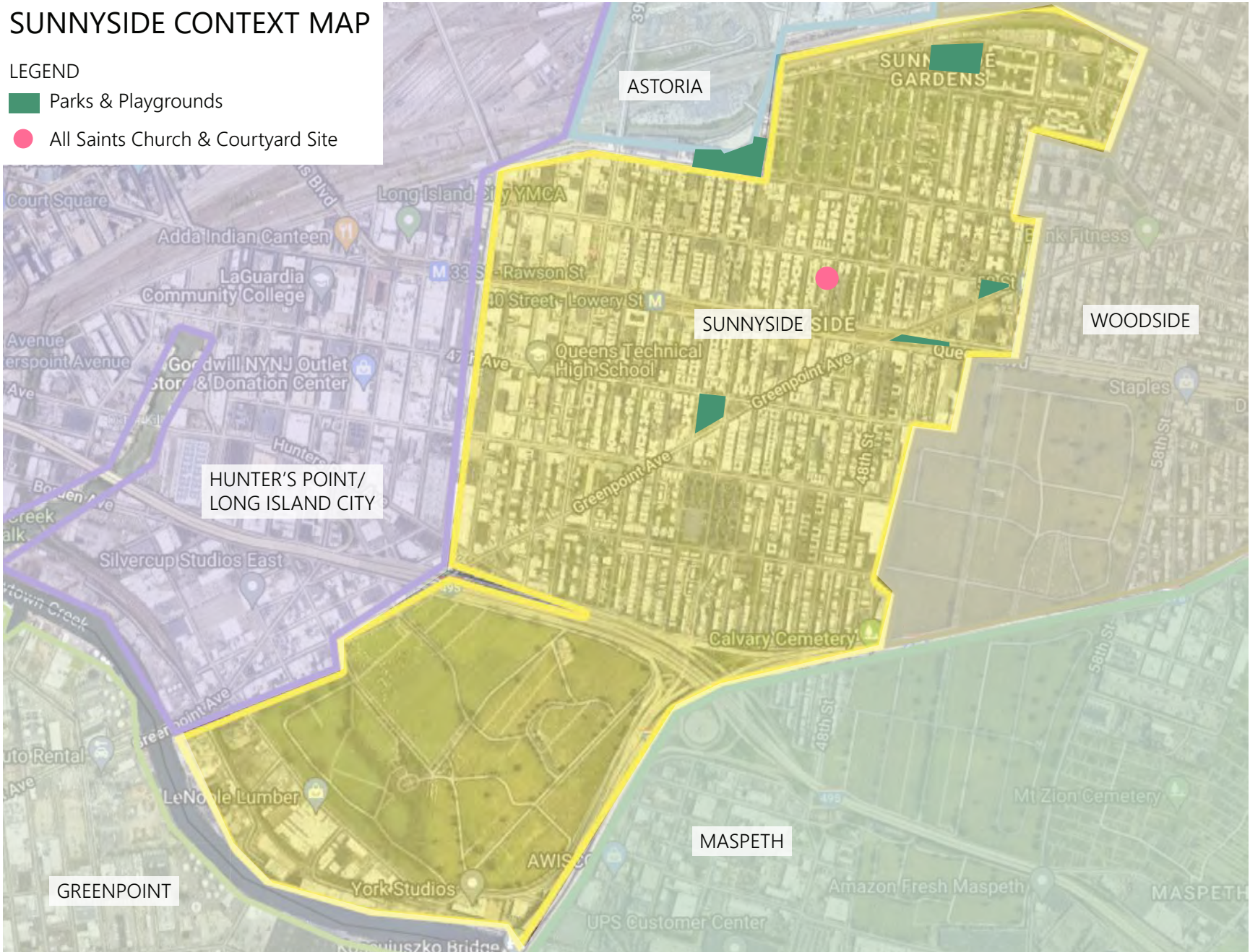
SUNNYSIDE, QUEENS, NY

QUEENS CONTEXT MAP
NYC BOROUGHES



SUNNYSIDE CONTEXT MAP

- LEGEND
- Parks & Playgrounds
 - All Saints Church & Courtyard Site



SUNNYSIDE, QUEENS, NY

Demographics

- As of 2020, Sunnyside has 49,000 residents

Attributes of Sunnyside

- Small-town feel of the neighborhood with walkability to major destinations
- Diverse, family-oriented neighborhood
- Tight-knit hub for social and cultural events



Population Age



	Sunnyside	QN	NYC
Under 5 Years	5%	6%	7%
5-14 Years	8%	11%	11%
15-24 Years	8%	11%	12%
25-44 Years	43%	30%	31%
45-64 Years	24%	27%	25%
65+ Years	12%	15%	14%

Race/Background



	Sunnyside	QN	NYC
Hispanic or Latino (of any race)	38%	28%	29%
White alone	34%	25%	32%
Black or African American alone	2%	17%	22%
Asian alone	25%	25%	14%
Two or more races	2%	2%	2%
Some other race alone	0%	2%	1%
American Indian and Alaska Native alone	0%	0%	0%
Native Hawaiian and Other Pacific Islander	0%	0%	0%

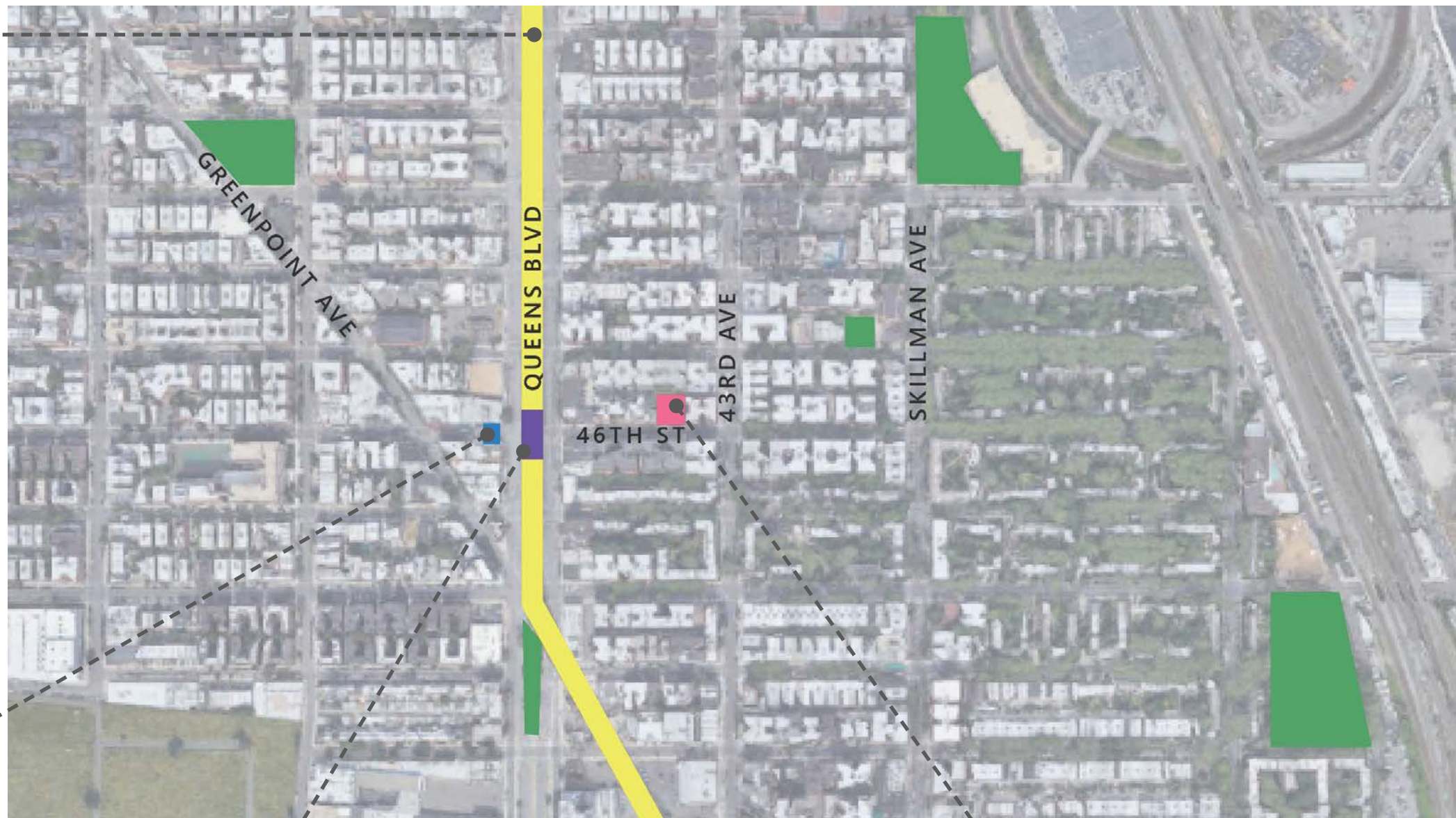
Source: NYC Small Business Services. Avenue NYC Commercial District Needs Assessment. 2020.

NEIGHBORHOOD CONTEXT MAP

OVERHEAD TRAIN STRUCTURE



SUNNYSIDE ARCH



46TH ST-BLISS ST STATION & BLISS PLAZA



ALL SAINTS CHURCH & COURTYARD



46TH ST-BLISS ST STATION & BLISS PLAZA



JUNE 13, 2022 AT 12:30 PM



AUGUST 21, 2022 AT 2 PM



People of all ages value...

- Flexibility
- Socialization
- Relaxation
- Entertainment

SUNNYSIDE ARCH & 46TH STREET



View of arch from Bliss Plaza

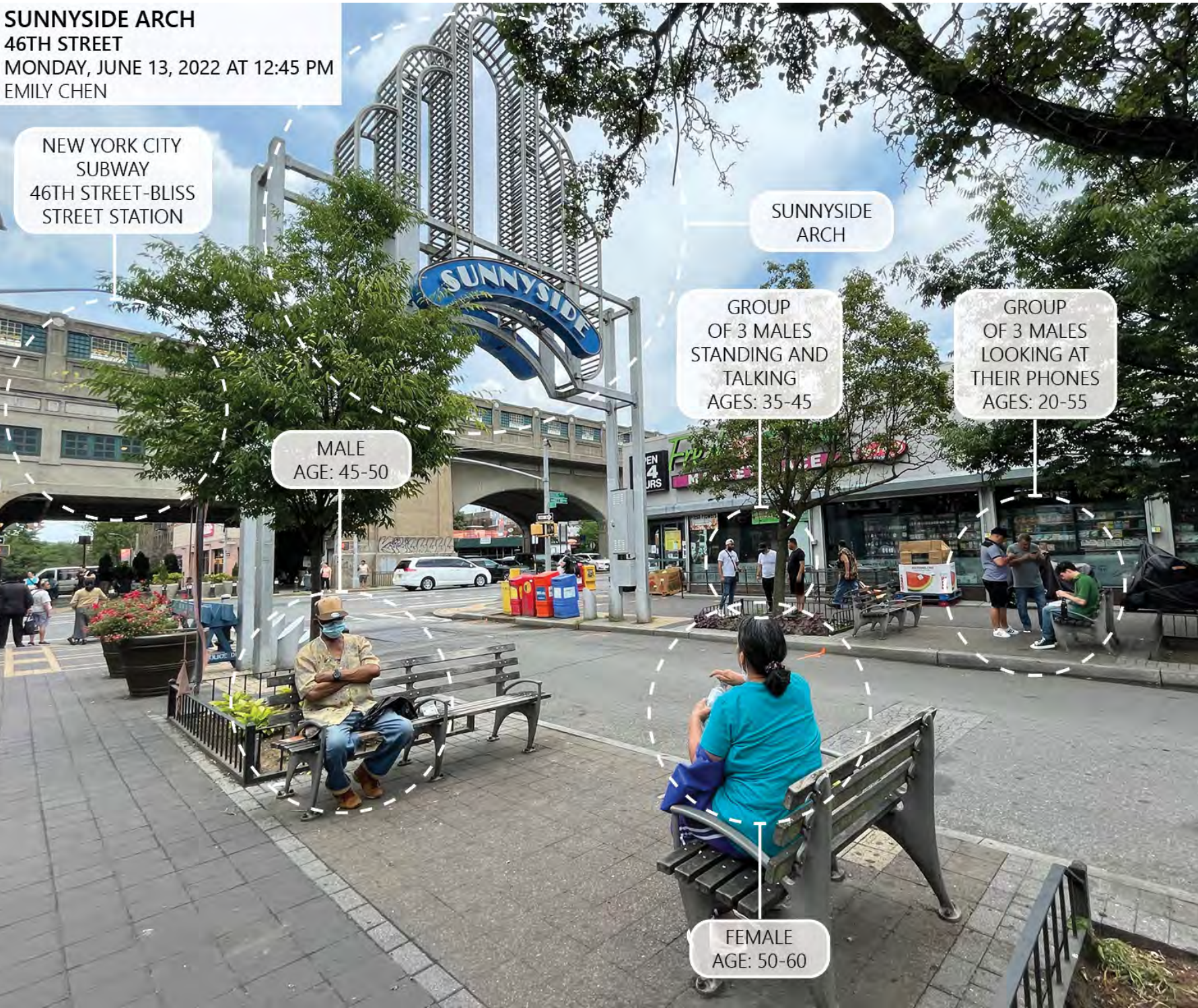


Holiday lights



Street performance

SUNNYSIDE ARCH
46TH STREET
MONDAY, JUNE 13, 2022 AT 12:45 PM
EMILY CHEN



People of all ages enjoy...

- An area to stop and rest
- Entertainment

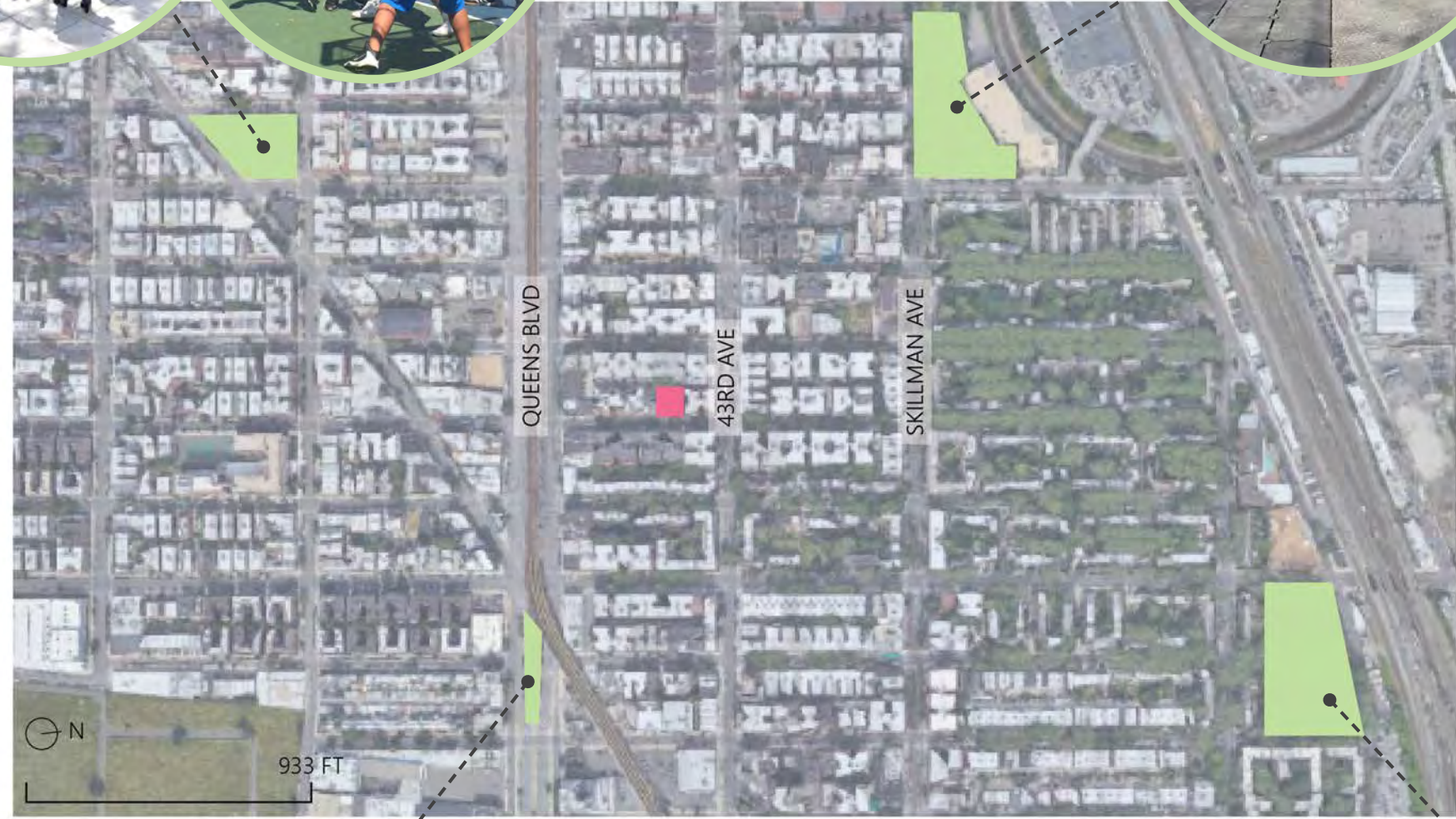
PLAYGROUND & PARK LOCATIONS



LANCE CORPORAL
THOMAS P. NOONAN JR.



TORSNEY/LOU LODATI



JOE SABBA

SUNNYSIDE GARDENS



SUNNYSIDE PLAYGROUNDS & PARKS

Lance Corporal
Thomas P. Noonan Jr.



Playground

Torsney/Lou Lodati



Sunnyside Media Swap

Sunnyside Gardens
(Membership Fee Required)



Entrance Arch



Water Spray



Playground (choice & flexibility)



QUIP: Queens United International Party



Game Tables

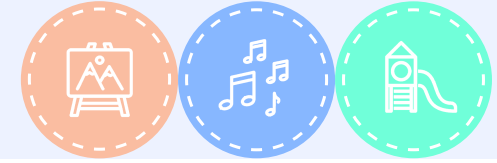


Athletic Area



Open Lawn for Community Events

CASE STUDIES: ART, MUSIC, & PLAY



Roxborough Pocket Park Philadelphia, PA



Community Art & Games

Artswalk Pocket Park Philadelphia, PA



Community Art & Performances

Levy Park Houston, TX



Grass Mounds



Entrance Archway



Concrete Seat Wall



Rubber Play Safety Surface



String Lights



Open Lawn



Family Concerts

ALL SAINTS CHURCH COURTYARD



ALL SAINTS CHURCH & COURTYARD

AUGUST 21, 2022 AT 2 PM



JANUARY 2, 2023 AT 6:30 PM



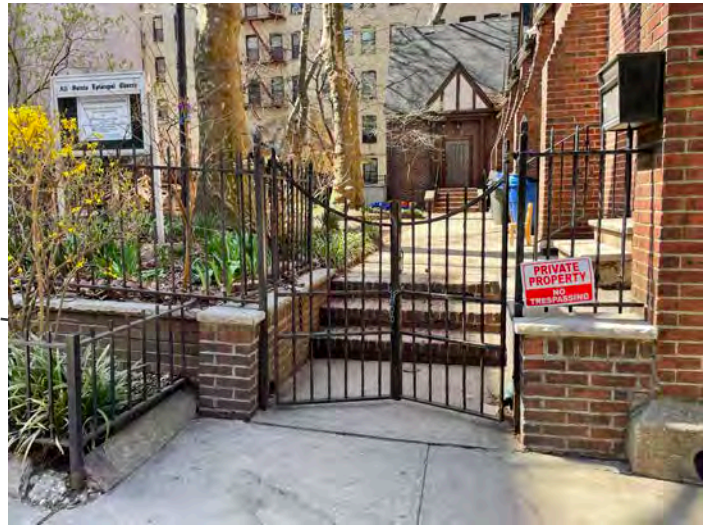
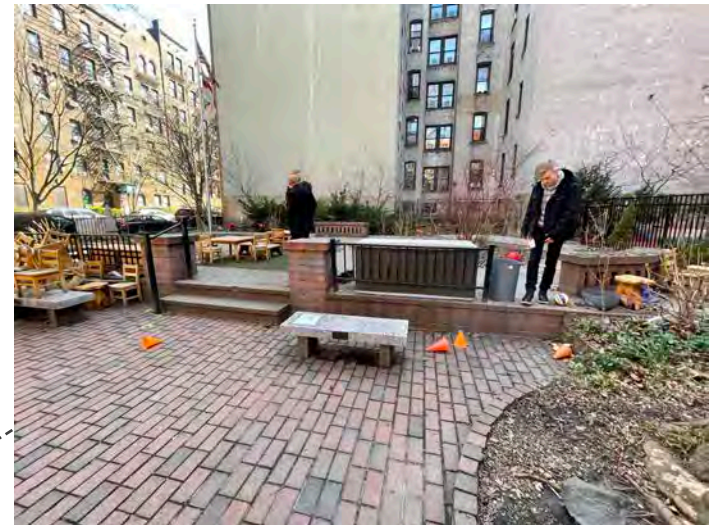
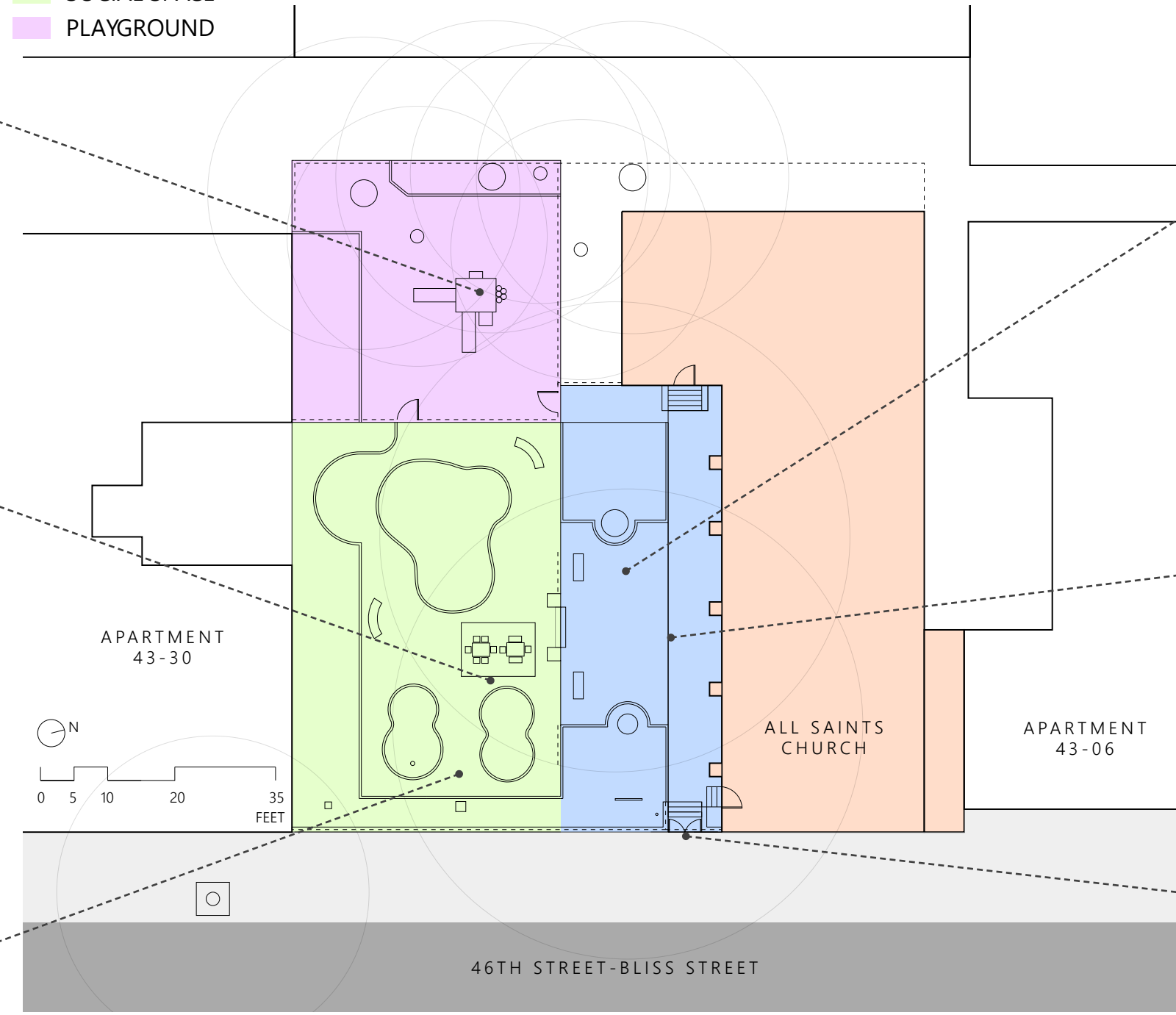
ALL SAINTS CHURCH COURTYARD SPACES

APRIL 2, 2022 AT 3 PM



LEGEND

- ALL SAINTS CHURCH
- ENTRANCE
- SOCIAL SPACE
- PLAYGROUND

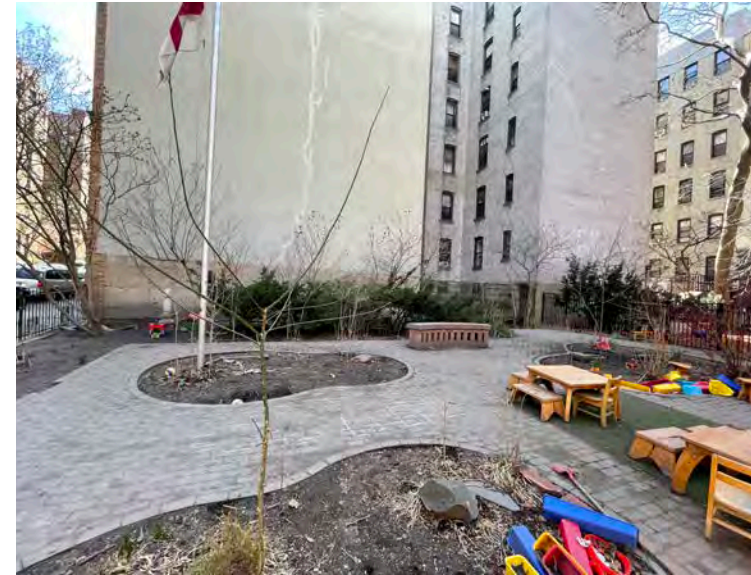


COMMUNITY INPUT SURVEY TAKEAWAYS

In August 2022, a Google Forms survey was conducted by the Land Trust with a total of 56 responses from the Sunnyside community.

Green Space & Plantings

- 11 people expressed the need for more plantings at the courtyard
- "More seating, more plants, I love the idea of **more evergreens** in our neighborhood parks!"

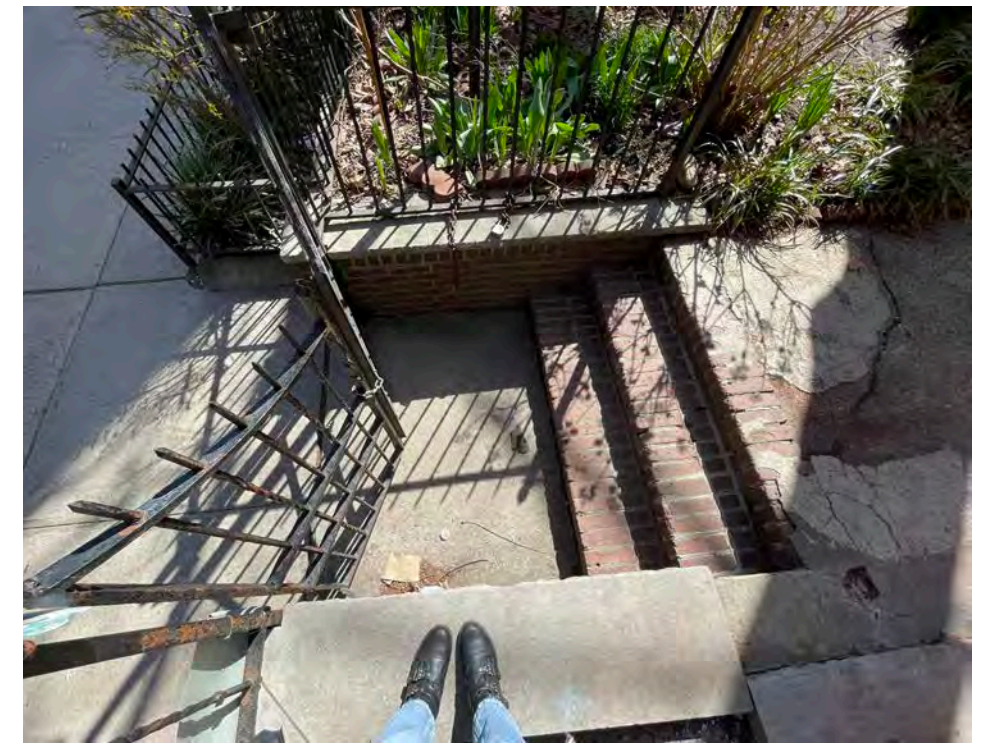
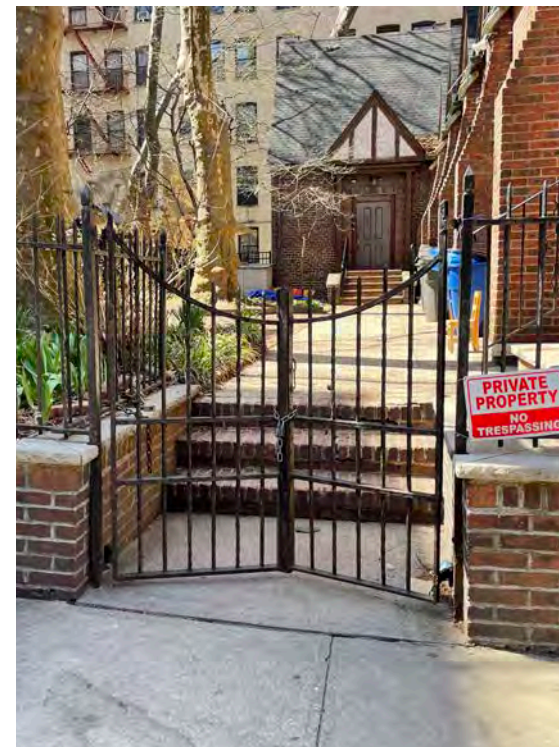


Accessibility

- 50 out of 55 people like/strongly like the idea of having a universally accessible entrance
- "ADA access should be the **#1 priority**"

Grand Entrance

- Archway and wider entrance
- " It doesn't currently look open/welcoming."



COMMUNITY INPUT SURVEY TAKEAWAYS

Flexible & Multipurpose Space

- 33 out of 55 residents like/strongly like the idea of creating a small stage/multipurpose area with seating around
- "I'd prefer free space so we can choose to use it as we see fit (sit on a blanket, on the grass, etc)."



Tranquil Space for Relaxation

- Area to sit and read
- "Honestly **none of the parks in Sunnyside have enough of a space for quiet reflection** sitting in the shade"
- "I think it's important to have a space geared toward people without little kids, **especially our seniors.**"



Seating Options

- 45 out of 55 people like/strongly like the idea of adding more benches
- Moveable tables and chairs

COMMUNITY INPUT SURVEY TAKEAWAYS

Shade Structure

- 51 out of 55 people voted like/strongly like for a permanent shade structure

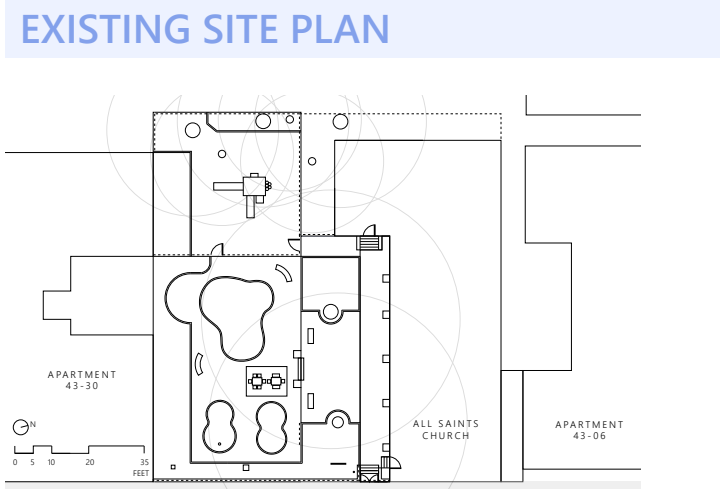
Grass Mounds

- 45 out of 55 people voted like/strongly like for grass mounds for play and seating

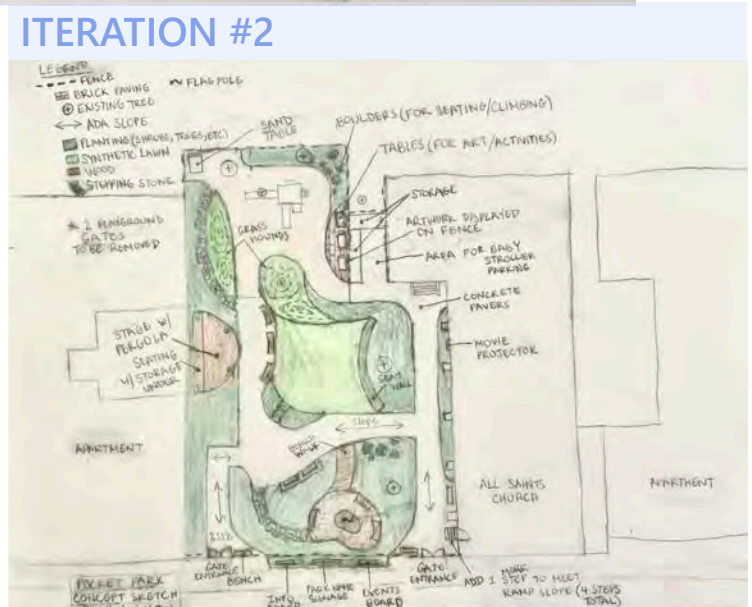
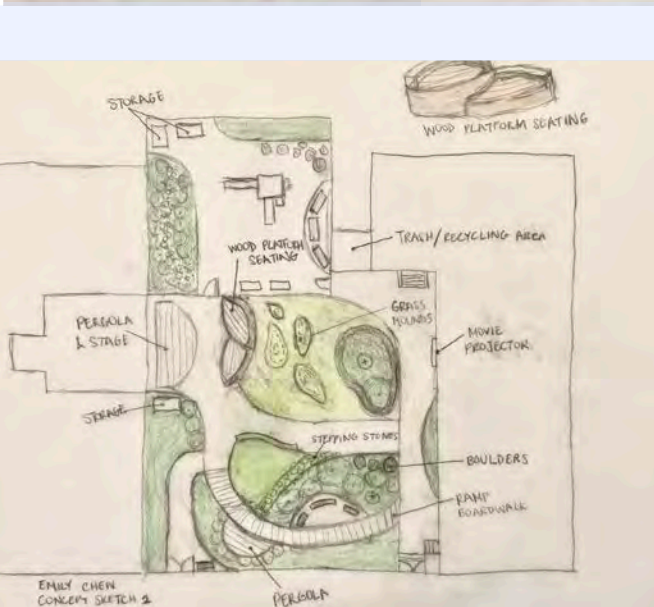
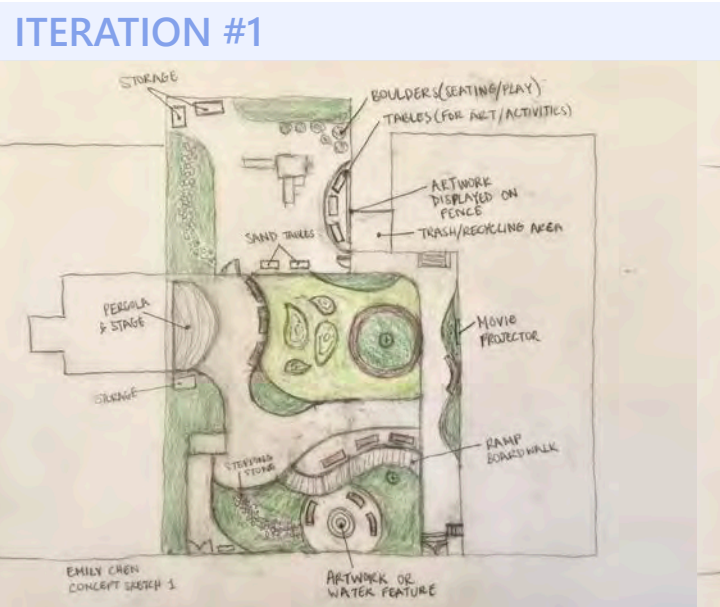


CONCEPT DESIGN PROCESS

OCTOBER 2022:
CREATED SKETCHES
AFTER COMMUNITY
INPUT

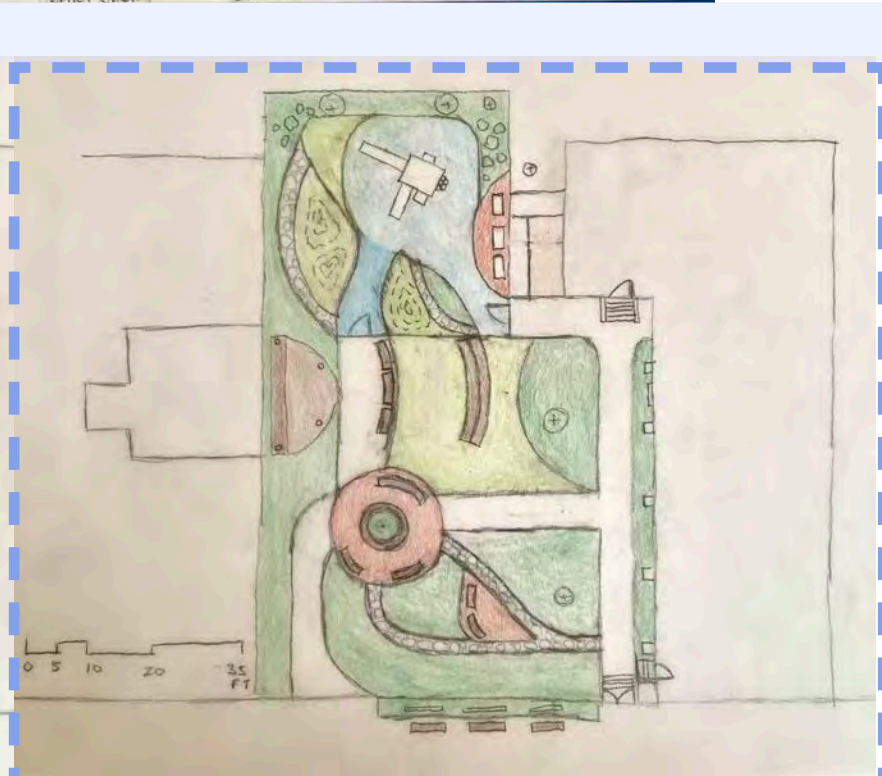
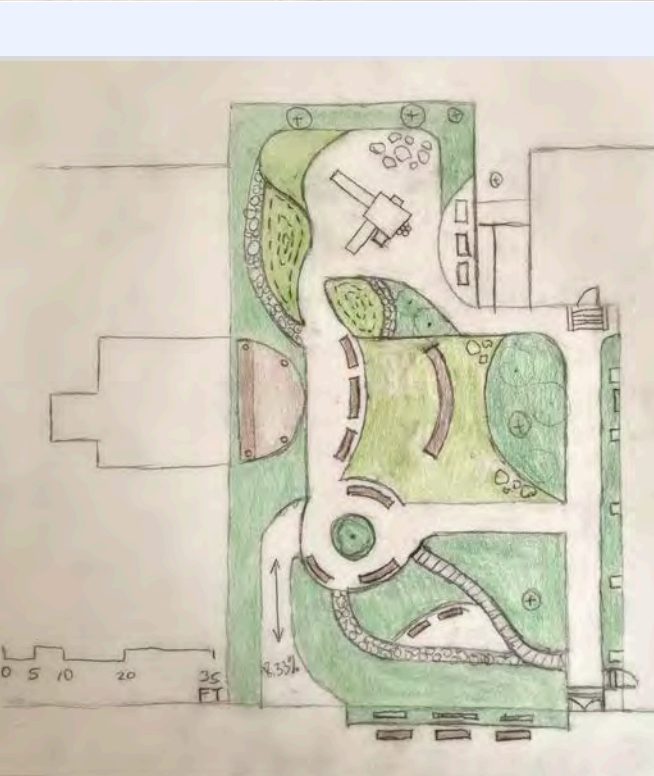


NOVEMBER-
DECEMBER 2022:
REVISIONS
AFTER
STAKEHOLDER



CHANGED
LOCATION OF
STAGE

JANUARY 2023:
REVISIONS
AFTER COMMITTEE
INPUT

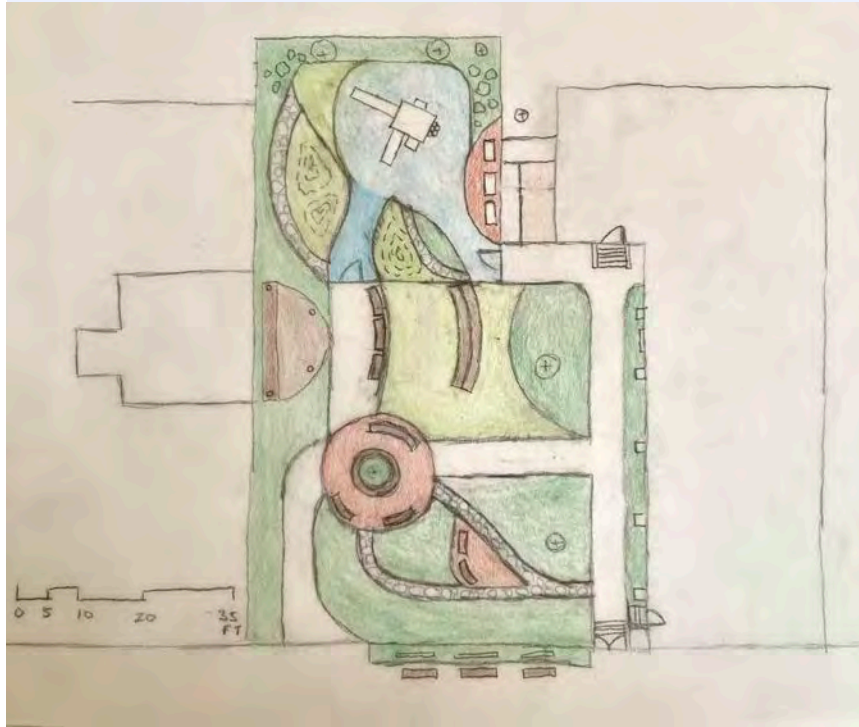


COHESIVE
OVERALL
FORM

CONCEPT DESIGN PROCESS

ITERATION #4

ITERATION #3



SUNNYSIDE POCKET PARK



UNIVERSALLY ACCESSIBLE ENTRANCE SECTION



TREE PLAN

PROPOSED TREES

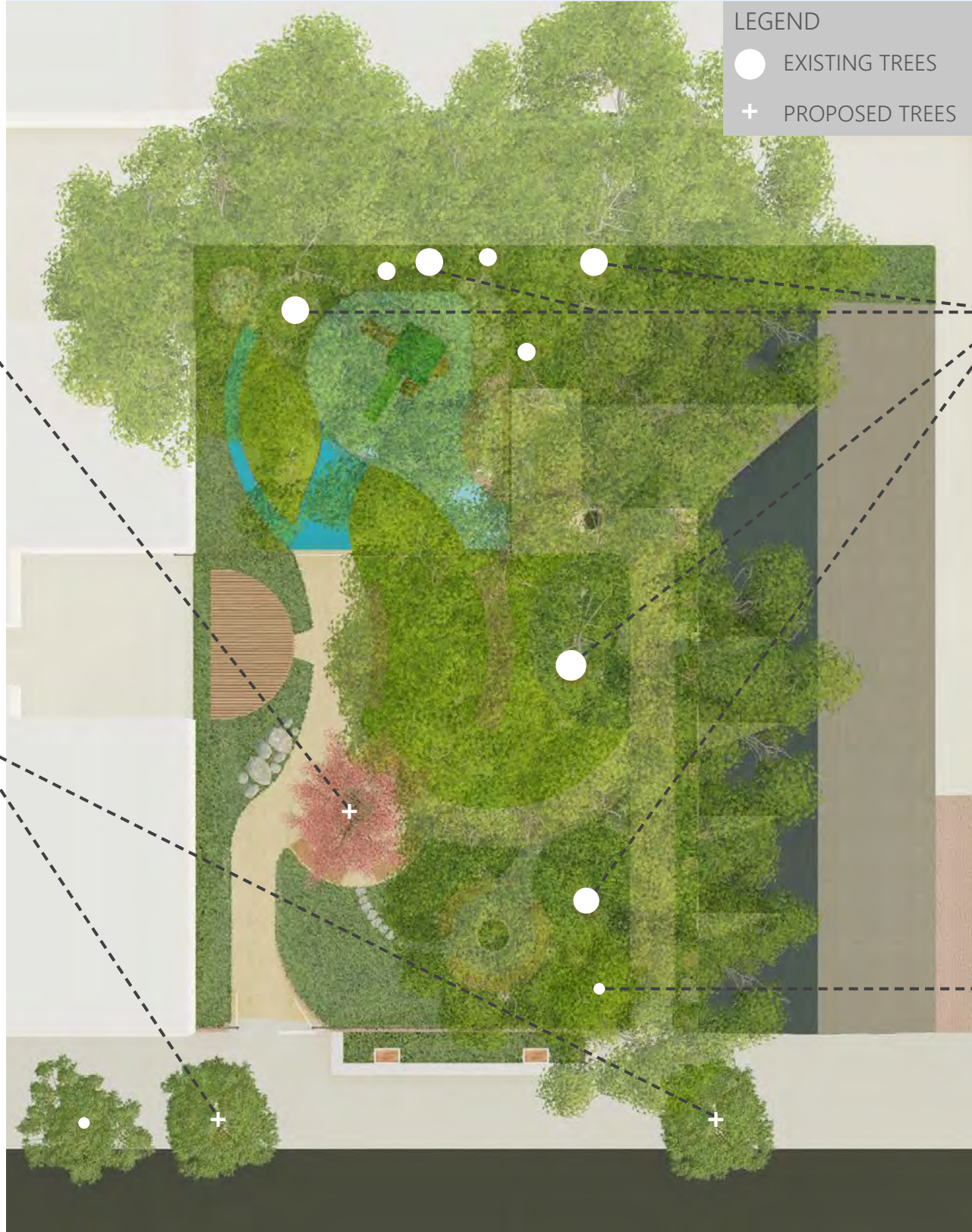


Flowering Dogwood
Cornus florida
Height: 35'-50'



Thornless Honey Locust
Gleditsia triacanthos
Height: 30'-70'

TREE LOCATIONS



LEGEND
● EXISTING TREES
+ PROPOSED TREES

EXISTING TREES



London Plane Tree
Platanus x acerifolia



Rose of Sharon
Hibiscus syriacus



PLANT PALETTE & DIAGRAM

GROUND COVER Height: 1"-8"



Labrador Violet
Viola labradorica



Barren Strawberry
Waldsteinia fragarioides

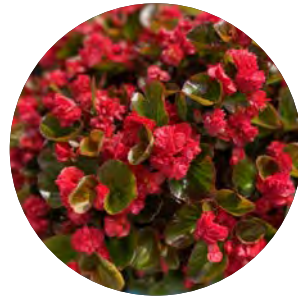


American Wintergreen
Gaultheria procumbens

PERENNIAL Height: 3"-1.5'



Snowdrops
Galanthus



Begonia 'Double Up Red'
Begonia semperflorens



Woodland Phlox 'May Breeze'
Phlox divaricata 'May Breeze'

PERENNIAL Height: 1'-2'



Eastern Star Sedge
Carex radiata



Wild Geranium
Geranium maculatum



Hosta 'Patriot'
Hosta 'Patriot'

ORNAMENTAL GRASS Height: 1'-3'



Blue Fescue Grass
Festuca glauca



Wavy Hairgrass
Avenella flexuosa



Hakone Grass 'Aureola'
Hakonechloa macra 'Aureola'

SHRUB Height: 3'-6'



Cherry Laurel 'Otto Luyken'
Prunus laurocerasus 'Otto Luyken'



Mapleleaf Viburnum
Viburnum acerifolium

PLANTING DIAGRAM



BLOOM CHART

SPECIES		MONTH												SIZE		GROWTH HABIT	EVERGREEN	SHADE TOLERANT	NATIVE	POLLINATORS
Common Name	Scientific Name	Jan	Feb	Mar	Apr	May	Jun	Jul	Aug	Sept	Oct	Nov	Dec	Height	Spread		Yes / Semi / No	Yes / Partial / No	Yes / No	
Labrador Violet	<i>Viola labradorica</i>													1"-3"	1'	Perennial, groundcover	Semi	Yes	Yes	
American Wintergreen	<i>Gaultheria procumbens</i>													4"-8"	6"-1'	Groundcover	Yes	Yes	Yes	
Barren Strawberry	<i>Waldsteinia fragarioides</i>													3"-6"	6"-2'	Groundcover	Semi	Partial	Yes	
Eastern Star Sedge	<i>Carex radiata</i>													1'-2'	1'-2'	Herbaceous perennial	Yes	Yes	Yes	
Wild Geranium	<i>Geranium maculatum</i>													1.5'-2'	1'-1.5'	Herbaceous perennial	Semi	Yes	Yes	
Hosta 'Patriot'	<i>Hosta 'Patriot'</i>													1'-1.5'	2'-2.5'	Perennial	No	Yes	No	
Blue Fescue Grass	<i>Festuca glauca</i>													1'	1'	Perennial, ornamental grass	Semi	Yes	No	
Hakone Grass 'Aureola'	<i>Hakonechloa macra 'Aureola'</i>													1.5'	1'-1.5'	Perennial, ornamental grass	No	Yes / Partial	No	
Wavy Hairgrass	<i>Avenella flexuosa</i>													2'-3'	1'-2'	Perennial, ornamental grass	Semi	Yes	Yes	
Cherry Laurel 'Otto Luyken'	<i>Prunus laurocerasus 'Otto Luyken'</i>													4'	6'	Shrub	Yes	Yes / Partial	No	
Mapleleaf Viburnum	<i>Viburnum acerifolium</i>													3'-6'	2'-4'	Deciduous shrub	No	Yes	Yes	
Flowering Dogwood	<i>Cornus florida</i>													35'-50'	15'-25'	Deciduous tree	No	Partial	Yes	

ENTRANCE



ARCHWAY
INSPIRED BY
CHURCH
INTERIOR

PARK SCHEDULE
& COMMUNITY
NEWS

BRICK
SEAT WALL

STAIR
ENTRANCE

ENTRY SOCIAL SPACE



METAL BENCH WITH WOOD SLATS

FLOWERING DOGWOOD

READING NOOK

TRANQUIL
READING
SPACE

STRING LIGHTS

STEPPING
STONE
PATHWAY



COMMUNITY
ART PLANTER

REUSING
EXISTING
GRAY BRICK
PAVERS



FLEXIBLE GATHERING SPACE

MUSIC PERFORMANCES, FESTIVALS, & EVENTS

COMMUNITY ARTWORK DISPLAY

OUTDOOR CLASSROOM

STAGE WITH PAVILION & WOOD SEAT WALL

TIERED SEATING

MOVEABLE TABLES & CHAIRS

SYNTHETIC LAWN



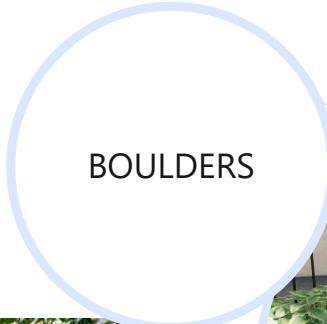
PLAYGROUND



MOVEABLE TABLES & CHAIRS



STEPPING STONE PATHWAY



BOULDERS



RUBBER PLAY SAFETY SURFACE

GRASS MOUNDS

CHILDREN'S ARTWORK DISPLAY

SAND FILLED TABLES



EXISTING PLAYGROUND SET



REUSING EXISTING RED BRICK PAVERS



MEMORIAL BENCHES

EXISTING
MEMORIAL
BENCHES

MOVIE
PROJECTOR



MOVIE NIGHT



SUNNYSIDE POCKET PARK

