

Nelson . Weiss Inc.

## HOLLY GRACE NELSON

Landscape Architect

2018: Culture of Health Academy Nursery School Mobile Vegetable Garden, IFNH  
2017: Meadow Border Garden, IFNH Entrance  
2017: Kitchen Herb Garden, IFNH Terrace  
2016: Amphitheater Garden, IFNH

### Academic Conferences

Council of Educators in Landscape Architecture (CELA), 2019: "Engaged Learning in the Campus Landscape"  
CELA, 2016: "Interpretive Landscape Design, Race, and Public History"  
CELA, 2013: "Visualizing NJ Agriculture"; "Programming the Middle Landscape: Cherry Grove Farm Case Study"  
ASLA, 2012: "Beyond Food Production": Agriculture Panel  
CELA, 2012: "Envisioning the Agricultural Landscape"; The Role of Landscape Architecture in Cultivating the Agricultural Landscape in N.J."  
PA/DE ASLA Annual Meeting, 2012: Agriculture Panel  
Rutgers Cultural Heritage & Preservation Studies Conference, 2012: "St. Croix Studio: People and Place"  
APLU Summit – Creating Change: Building Human Capacity for a Sustainable Future, 2010  
("Designing the Twenty-first Century Farm", "Tools for Interpreting Place")

### Leadership

Rutgers Learning Academy, 2019/20

### Invited Presentations

Landscape Architecture Foundation (LAF) webinar, Panelist, "Recruitment in Undergraduate Landscape Architectural Education: Challenges and Strategies", February 1, 2019, Moderator Kofi Boone of NC State, Mark Mayer of LSU, Ken Yocum of UW, and Roberto Rovira of FIU.

Leonardo Art Science Evening Rendezvous (LASER) Talk: Living Laboratories: "Learning Landscapes: from Pollinator Gardens to Drone Playground" with Christina Kaunzinger, April 17, 2019, Zimmerli Art Museum, Rutgers University.

Friends of Princeton Open Space: "Sustainable Residential Landscape Design: Honore Residence", May 19, 2018.

Hunan Polytechnic Training Program, "Social Landscapes", October 6, 2017.

Lathrop Retirement Communities, Northampton, MA, 2014: "Can Landscape Architecture Help Create Community?"

### Publications

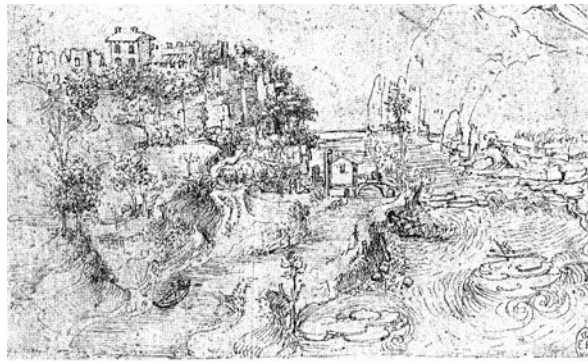
CELA Conference Proceedings 2019 Theme Track (Engaged Scholarship): "Engaged Learning in the Landscape", Holly Nelson, Holly Grace; Christina Kaunzinger; and Jeanmarie Hartman; Edwin Gano (MKW Landscape Architects); Lena Struwe; Laura Lawson.

CELA Conference Proceedings 2016: "Interpretive Landscape Design, Race, and Public History", Holly Nelson, Anita Bakshi, Laura Lawson, David J. Goldstein, Co-authors

*you are here: the journal of creative geography* 2014, University of Arizona, "The Machine in the Garden: Framing the Agricultural Landscape", Holly Grace Nelson

### Reviews

Erasing Boundaries Symposium, NYC, May, 2011: *Landscape Journal*

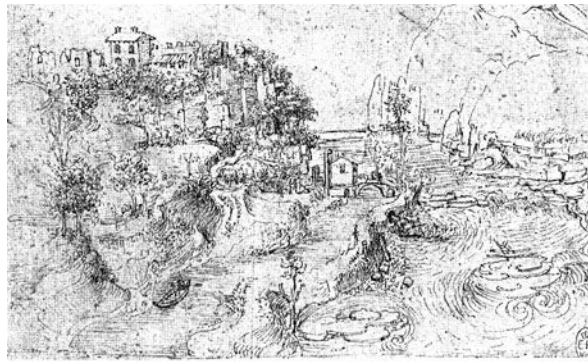


*Nelson . Weiss Inc.*

## HOLLY GRACE NELSON

*Landscape Architect*

- Grants**           \$ 62,000 U.S. Department of Interior—Insular Territories: St. Croix Marine Research & Education Center  
Conceptual Site Design Studio (co-PI with JeanMarie Hartman)  
\$ 52,000 Studio/ \$ 10,000 Student Outreach Internship
- Student NJASLA Awards** Katherine Rodriguez and Adriana Hall, “NJ Cultural Complex Design”, Trenton. Student Award, 2019  
Diana Randjelovic and Nicole Cohen, “Stairs to Meadow”, IFNH. Student Award, 2019  
Edwin Gano and Joseph Tidona, “Stair-Side Farm”, IFNH. Student Award, 2018  
Samantha Dreher: “ADA Amphitheater Garden”, IFNH. Student Honor Award--Design, 2017  
Muzi Li: “Landscape of Life Healing Garden, New Providence, NJ”, Student Merit Award--Design, 2016  
Theresa Hyslop: Living Labs for the Cook/Douglass Campus: “Enhancing Educational Opportunities and Campus Environment”, Student Merit Award-- Landscape Planning and Analysis, 2016  
Deanna Lu: “Storytelling through the Landscape”, Student Chapter Award—Landscape Planning and Analysis, 2015  
Michelle Hartmann, Rebecca Cook, Jessie Woods: “Re-envisioning Campus: Masterplanning for Students by Students”, Student Merit Award--Communication, 2015  
Kevin Perry’s video “Praxis Studio: Agricultural Literacy”: NJASLA Student Honor Award--Communication, 2013
- Other Student Awards** Muzi Li’s Landscape of Life Healing Garden: Award of Excellence for Design/Build: Commercial/Industrial, Landscape Achievement Award Winners: Landscape Techniques, Contractor  
-Grand Award: 2019 New Jersey Nursery & Landscape Association  
-Grand Award: 2016 National Association of Landscape Professionals Awards of Excellence  
-Gold: Outstanding Achievement Award: 2016 NESPA (Northeast Pool and Spa Association)
- Masters Thesis Advisor** 2020: Anna Erickson, “Nature, Culture, and Infrastructure: Pylons in the Garden: Rural and Suburban Hiking in New Jersey’s Gateway Region”  
2019: Chair: Sanja Martic, “Revealing the Unseen River: A Rivercentric Landscape Exploration”  
Nicole Cohen, “Traversing Urban Wildlands: an Intervention Within the Unique Plant Communities of Liberty State Park”.  
2017: Chair: Breanna Robles, “A Garden for East Flatbush”  
Chair: Amber Betances, “Urban Refuge Partnership: A Case Study in Reconnecting an Urban Community to Nature”  
Donna Dahrenger,  
2016: Chair: Muzi Li, “An Exploration of Senior-Friendly Design Interventions for Columbus Park, NYC”  
Megan Pilla, “Stream Bank Revitalization in Somerville, NJ: A Case Study in Planning Strategy for the Integration of Ecological and Social Needs in Public Open Space”  
Andrew Schlesinger, Pop-Up Compost Project: Reframing the Process and Perceptions of Community Composting in New Brunswick, NJ”  
2015: Chair: Jennifer Burkhalter, “Understanding Community: Designing an Interactive School Landscape for Individuals with Symptoms of Autism” (Chair)  
Han Yan, Visualizing Ecological Services: Bridging Land Recovery and Social Awareness”  
Kara Lugar, “The Living Sea Edge: An ecological approach to coastal protection at the Chapel Site on Sandy Hook, Gateway National Recreation Area  
2014: Arianna De Vries, “Suburban Dirt: A Growing Element in NJ’s Community Gardening Trend”  
Hanife Vardi Topal, “Potential of Community Gardens for Sustainable Urban Development in Izmir, Turkey  
Zachary Rohde, “Setting the Stage for the Emergence of New Realities—The Interface of Hand, Electronic, and Lens-based Media for the Sensible Discovery & Imagination of Landscape Morphology”  
2013: Chair: Wanqing Huang “Retrofitting the Everyday Landscapes of NJ Transit Centers”



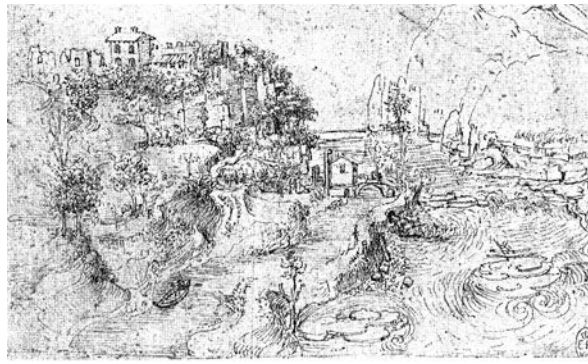
*Nelson . Weiss Inc.*

**HOLLY GRACE NELSON**

*Landscape Architect*

Kevin Perry, "Walters Hall: A Space for People"  
Baewon Suh, "Revitalization of Open Space of High Rise Apartment Complex"

- George H. Cook Senior Thesis Advisor**
- 2020: Amanda Leifer, "Kibbutzim and Moshavim: Exploring Communities and Their Relationships with the Agricultural Landscape in Israel and the West Bank"
  - 2020: Katherine Rodriguez, "Rutgers University Golf Course: Moving Closer to a Sustainable Stormwater and Landscape Management" (Co-Advisor with JeanMarie Hartman)
  - 2018: Erika Schellick, "Creating Ecological Connections Across Rutgers University Busch & Livingston Campuses" (with Christina Kaunzinger)
  - 2018: Andrew Malkinski, "Rutgers Ecological Golf Course Site Analysis" (with Christina Kaunzinger)
  - 2016: Breanna Robles: "A Place to Call Home: A Courtyard Design for Ebbets Field Apartments"
  - 2015: Theresa Hyslop: "Creating a Framework for Living Labs on Cook Douglass Campus"
  - 2014: Rebecca Cook, "Designing with Water: An Exploration for Stormwater Management Practices for Rutgers University's Cook Douglass Campus"
  - Michelle Hartmann, "Sustainable Socialspace: The Understanding & Application of Socialspace on Cook Douglass Campus"
  - Jessie Woods, "Sustainable Transportation Strategies & Their Application in University Design"
- FIGS Advisor**
- 2018: Landscape Architecture Student Advisor for Amanda Leifer
- Student Presentations**
- 2019: Sophia Trinidad and Sanja Martic: "Exploring Fourth Nature Along Re-purposed Transportation Arteries of the Emerging East Coast Greenway", Fabos Conference on Landscapes and Greenway Planning, University of Massachusetts, Amherst, March.
  - Sophia Trinidad and Sanja Martic: "Exploring Fourth Nature Along Re-purposed Transportation Arteries of the Emerging East Coast Greenway", Mid Atlantic Greenways and Trails Summit, University of Pennsylvania, Philadelphia, April.
  - 2016: Megan Pilla: CELA, 2016: "An Exploration of the Use of Social Media for Public Participation in Ecological Planning and Design Process"
  - Andrew Schlesinger: CELA, 2016: "Designing for Modular Composting at the Community Scale"
  - Theodore Aretakis: Urban Environmental Stewardship Conference, 2015: "Investigating New Farming Typologies"
- Student Independent Projects**
- 2019: -Urban Ag Garden, Martin Hall (Katherine Rodriguez, Jessica MacPhee, Tiffany Nguyen, Aliyah Williams)
  - LA Student Club: Pollinator Garden, Buccleuch Park, New Brunswick (collaboration with Lower Raritan Watershed Partnership)
  - 2018: -Blake Hall Accreditation Garden (Jason Cincotta, Alexis Lo, Green Team, student volunteers)
  - Martin Hall Garden (Joe Tidona, Edwin Gano, student volunteers)
  - Culinary Herb Garden, IFNH (Byrne Seminar with Arianna Lindberg; sophomore studio designs—Professors Arianna Lindberg, Richard Alomar)
  - Culture of Health Academy Nursery School Mobile Vegetable Garden (Byrne Seminar with Arianna Lindberg)
  - Design Internship Grant: Metuchen Greenway Extension (with Brandon Younie, Sophia Trinidad, Wolfram Hoefer, in collaboration with NJASLA, NPS Rivers, Trails, and Conservation Program, Metuchen Planning Department)
  - Universal Institute Rehabilitation and Living Center Garden (Emily Otterbine and Universal staff)
  - Everas Community Services Community Garden (Kayla Weiss, Everas staff, and Laura Lawson)
  - 2017: Amber Betances & Mai Thy Bui, Deiner Park topographic model
  - CUES--Emily Otterbine, Devin Fields, Anna Erickson: Emscher-genossenschaft Concept Designs
  - Barbra Walker, Blackwells Mills Causeway Design and Design Application & Approval Process (in collaboration with NJDOT, Millstone Valley Preservation Coalition and Christina Kaunzinger)



*Nelson . Weiss Inc.*

**HOLLY GRACE NELSON**

*Landscape Architect*

2016: Muzi Li, Landscape of Life Healing Garden (NJ Sharing Network, New Providence, NJ)

**Student Exhibitions**

PARKing Day, (Rutgers Student Chapter of the ASLA), 2014-17  
Jennifer Burkhalter: SIGHT/SITE, Rutgers Art Library (in collaboration with Kate Higgins), 2013  
Ag Fair, St. Croix, USVI, 2011—student projects for Marine Research & Education Center (with Christine Rung)  
St. Croix NPS Visitor Contact Station, Salt River Bay National Historical Park & Ecological Preserve: Student Designs for Marine Research & Education Center: public exhibition, 2011 (with Sarah Nitchman, NPS STX Internship); also Senior Studio benthic/terrestrial topographic model  
NOFA Winter Conference, 2012, Princeton University: Farm Maps (by colloquium students: Christopher Jurgensen, Erin Greenwood, Kevin Perry, Brian Curry, Adam Cesanek)  
Terhune Orchards, Princeton NJ, 2012: Farm Maps (see above)  
Rutgers Garden-- Ecological Literacy Arbors: PRAXIS Farm Studio & Intro Environmental Design 2

**Student Internships**

Rutgers Golf Internship, Co-Advisor with Christina Kaunzinger, 2017 to present  
Emscherengenossenschaft Internship, Co-Advisor with Wolfram Hoefer, 2017 to present  
Maplewood Park Internship, 2017-9  
Student Outreach Internship, NPS on St. Croix (2014)  
Ag in the City Internships, summer—Ellen Gallagher, Scott Miller (2014-5)  
Student Outreach internship, NPS on St. Croix (2013)  
Farm Summer Internship (2013)

**Academic Service**

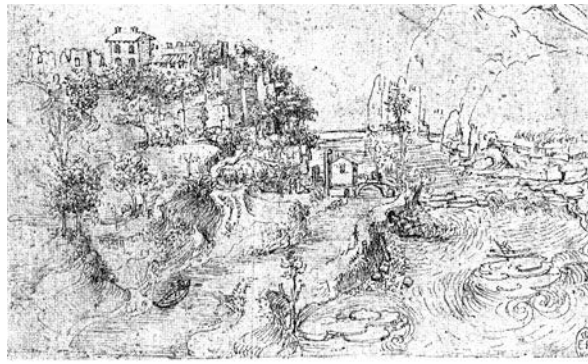
ASLA Education Committee, 2016 to present  
-“John Heinz Urban Wildlife Refuge” diversity video for ASLA and NJASLA, PA/DE ASLA Professional Chapters (shown at 2019 NJASLA Annual Conference, Atlantic City, February, 2019).  
-“4+1 Dual Degree” diversity video for Rutgers Landscape Architecture, NJASLA (shown at 2019 CELA Annual Conference, University of California, Davis, March, 2019 and on LAF Diversity video, 2019).  
Curriculum and Education Policy Committee, 2015 to present  
George H. Cook Committee, 2013 to present  
Landscape Architecture Scholarship Committee, Chair 2010 to present  
Faculty Advisor: Student Chapter of the ASLA; Graduate LA Club, Rutgers, 2012 to present  
Landscape Architecture Undergraduate Committee, 2011, 2012, 2015-16 (Co-Chair)  
NTT Task Force, 2012  
Instructor Search Committees, summer, 2012 to present

**Fall Field Trips**

San Diego ASLA Professional Field Trip, 2019  
Philadelphia ASLA Professional Field Trip, 2018  
New Orleans ASLA Professional Field Trip, 2016  
Chicago ASLA Professional Field Trip, 2015  
Denver ASLA Professional Field Trip, 2014  
Boston ASLA Professional Field Trip, 2013  
Phoenix ASLA Professional Field Trip, 2012  
NYC Practitioner-based Design Tour, 2011 in collaboration with Rich Bartolone

**Byrne Seminars**

“Landscape/Seascape” (2019, with Gary Taghon, Professor and UPD, Program in Marine Sciences)  
“Building a Schoolyard Garden” (2018, with Arianna Lindberg)  
“The Harvest Garden: creating an edible landscape on campus” (2017, with Arianna Lindberg)  
“Urban Landscapes and Democracy” (2016, with Frank Gallagher)



*Nelson . Weiss Inc.*

**HOLLY GRACE NELSON**

*Landscape Architect*

"Art and the Digital Age" (2014, with Kate Higgins)

"Explore NJ Farms" (2013)

**Other  
Grants**

\$ various SEBS Academic Dean for Planting Design Studio Living Lab and garden installations, 2016 to present

\$ 2,500 SEBS Academic Dean for collaborative farm studio video

\$ 500 Rutgers Technology Without Borders Symposium for screening of *King Corn*

\$ 1,000 SEBS Academic Dean for screening of *King Corn*

\$ 1,500 SEBS Academic Dean for lectures by Erle Ellis, UMD on The Anthromes Project

\$ 1,500 SEBS Academic Dean for lecture by Susan Szenazy, *Metropolis* magazine, on sustainable design

\$ 1,500 SEBS Academic Dean for website design workshop by Abby Tovell, T Square Design Studio, Inc.

\$ 750 SEBS Executive Dean for lecture by Eric T Fleisher, Harvard Soils Project

In-kind transportation & lodging by St. Croix NPS & \$6,000 SEBS International Study/ Academic Dean grants