



Senior Studio -- Housing & Open Space

Art, Music & Storytelling - Creating Public Spaces in Red Bank, NJ

The 2023 Advanced Landscape Architecture studio will partner with [CoLAB Arts](#) (based in New Brunswick) and the [Count Basie Center for the Arts](#) in Red Bank, NJ to develop ideas for enhancing the design of public spaces in the city. The studio will use the testimonies shared during CoLAB's storytelling sessions with local stakeholders to inform design and planning proposals which will consider transportation, pedestrian safety, shoreline resilience, and public art interventions. Sites will include the proposed Sunset Park site in west Red Bank as well as the Basie Center's public arts plaza, the Two River Theater plaza, Johnny Jazz Park, as well as other potential sites. These interventions will be informed by the history of arts and music and Red Bank alongside current community histories.

Learning Objectives:

1. Approach a complex design problem, and independently structure complex design problems.
2. Investigate the methodological relationship between survey, analysis, and design decisions.
3. Develop a comprehensive urban design that meets and possibly exceeds professional standards.
4. Design and graphically represent high quality open spaces.

RED BANK, NEW JERSEY

The Red Bank Draft Master Plan

Red Bank blends the best aspects of small-town life with world-class cultural amenities, an extensive and beautiful waterfront, shopping and dining opportunities, a diversity of community and non-profit organizations, distinctive architecture, and important historical resources. Our vision is that Red Bank continues to evolve as a diverse, inclusive, and vibrant place for people of all ages and walks of life to call home as well as visit, embracing creativity and innovation while treasuring the elements that make it such a special and attractive community. Due to Red Bank's geographic location, shape, and historical transportation as well as development patterns, the Borough's built environment organically developed near the Marine Park waterfront south down to Broad Street and surrounding the train station. While the station's rail access is a major asset, the railroad tracks split the Borough in half, creating a physical barrier between the west and east sides. This separation is discussed throughout the Red Bank Today report.

Red Bank first developed with the opening of Joseph Price's Bank Tavern located in today's Marine Park area in the 1600s. This area became the heart of the community, where farmers would transport goods such as wheat and produce to New York City. With the invention of the steamboat, the Red Bank riverfront became a bustling port with accelerated methods of transporting goods and passengers. The central core expanded directly south of Marine Park with businesses constructed along Broad Street in the 1800s. Business owners built their homes in close proximity, just east of Broad Street along Mechanic, Mount, Spring, Wallace, and Washington Streets. The end of the 19th century brought the development of the railroad. In 1875, the New York and Long Branch Railroad built the Red Bank station, later purchased by the Central Railroad of New Jersey, followed by the NJ Transit. Regional connections to Red Bank expanded from New York City to Long Branch, New Jersey. To better connect northern and southern New Jersey, the Garden State Parkway was built between 1946 and 1957. The parkway exits into the Township of Middletown along Newman Springs Road (County Route 520), which leads into Red Bank traveling east. Due to its strategic location as the "Gateway to the Two River Peninsula," Red Bank experiences additional traffic circulation and congestion from visitors as well as drivers to other regional destinations.

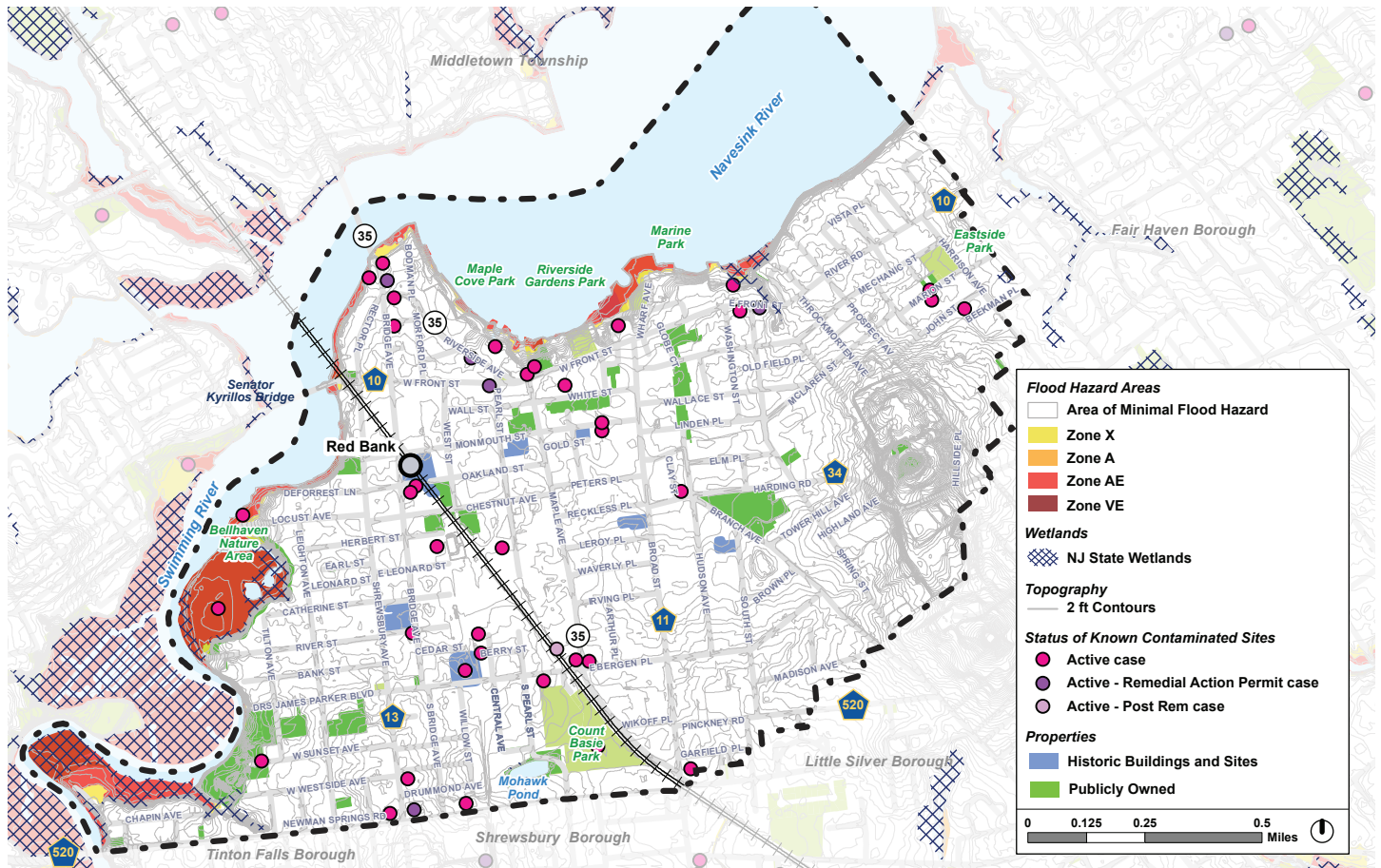


Figure 52 - Environmental Constraints

PROJECT PARTNERS

CoLAB Arts' vision is to create more livable, sustainable, and exciting environments through art. coLAB Arts engages artists, social advocates, and communities to create transformative new work. coLAB Arts facilitates creative conversation through innovative programs and artist infrastructure, connects artists with community partners and mentors, and executes productions that challenge perceptions and inspire action. coLAB Arts generates community-powered projects and seeks to create an art scene using new and established spaces. Its work takes place in community rooms, houses of worship, parking lots, schools, bars, and backyards. A "let's get it done" work ethic and flair for mischief colors coLAB Arts' aesthetic and an emphasis on community engagement and professional development defines its commitment to the arts. coLAB Arts believes that artistic expression is civic engagement and that collaboration is an active and creative process. coLAB Arts draws energy and inspiration from working with emerging artists and finding new platforms and audiences for established creative voices. coLAB Arts engages communities to ask questions, develop relationships, and come together to create new work across socio-economic, ethnic, and generational lines.



The Count Basie Center for the Arts is New Jersey's premier center for the cultural arts, dedicated to fostering powerful, inclusive artistic experiences and creative exchange of ideas. The Basie mission is to inspire, educate and entertain through its distinct and engaging cultural and artistic offerings that embrace and amplify the diversity of the region. As a nonprofit organization, the Basie is committed to enriching the community's quality of life by generating opportunities for participation in the arts, partnering with schools, collaborating with other mission-based organizations and driving regional economic prosperity. The Basie's vision for the future is to evolve as a world-class center for arts education, culture, and the performing arts. This evolution includes our industrious expansion, which will potentially double our amount of performance, educational and cultural offerings, while reaching a wider sector of the community through new partnerships and programs. The Count Basie Center for the Arts board, leadership, management and staff are enthusiastic to be a leading voice, advocate, and destination for arts education and the performing arts in Monmouth County, New Jersey while making a positive impact on the arts regionally, nationally, and globally.



Course Expectations

Except for circumstances truly beyond a student's control, all assignments are due at the dates and times specified. Any work submitted late will be penalized a letter grade for each day past due. Studio sessions, lectures, and the Common Lectures all count as individual class sessions for this course. More than 3 unexcused absences will result in a step reduction in your semester grade. If you encounter any personal circumstances that inhibit your ability to fulfill the requirements of this course, you should contact the Instructor immediately. Submitted drawings, models, photographs, or written papers for any project assigned in Landscape Architecture courses are considered the property of the department. All information in this syllabus and course schedule is subject to change throughout the semester and will be announced during class; it is your responsibility to stay informed!

Homework

Project statements outline the final expectations for each project. In addition, new assignments may be given during the studio and lectures as a way to direct your work. Reading assignments are required homework. Students are expected to become increasingly self-directed, beginning to pace themselves to complete the project deliverables in the allotted timeframe.

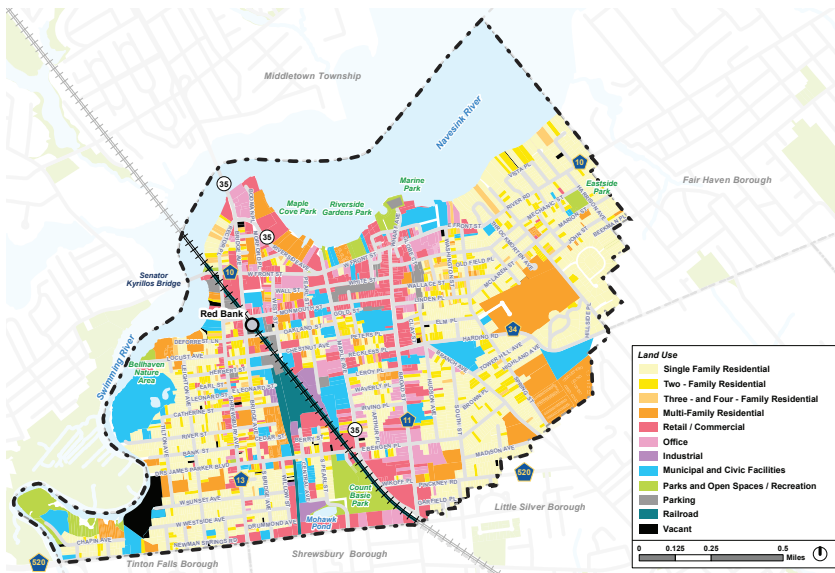


Figure 5 - Land Use

Borough of Red Bank Master Plan

Source: Monmouth County, USGS, NJ Transit, NJDEP, NJDOT, CoreLogic (Exported from Urban Footprint), BFJ Planning.

Main Studio Themes

ENHANCING RESIDENT ACCESS

Connecting residents from the west Red Bank to the amenities at the Basie Center and other areas of town.

DESIGNING NEW HOUSING

Housing provision and open space design near the train station area, as well as landscape design and housing modifications for existing housing in relation to resiliency efforts at areas at risk of storm surge

BEAUTIFICATION / PLANTING DESIGN

Native plants, low maintenance plantings, increasing biodiversity

DOCUMENTING HISTORY

Representing the history and impact of the arts and music in Red Bank

PUBLIC ART

Landscape and open space designs for outdoor public arts plazas and other spaces

TRAFFIC CALMING

Traffic planning in relation to the Crash Density Map (2018-2020) using community narratives to inform where street murals and delineators will be placed.

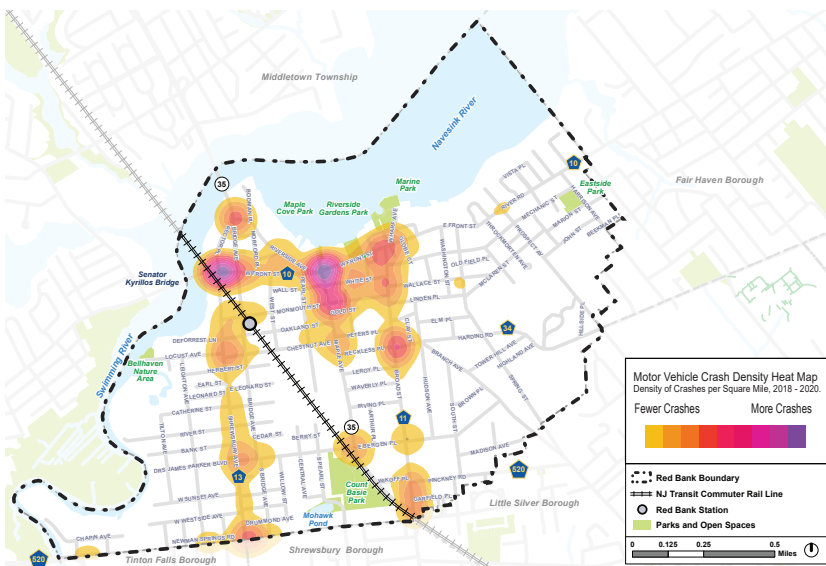


Figure 14 - Crash Density Map (2018-2020)

Borough of Red Bank Master Plan

Source: Monmouth County, USGS, NJ Transit, NJDEP, NJDOT, OpenStreetMap (OSM) Road Network (Exported from Urban Footprint), NJDOT Safety Voyager, BFJ Planning.

Studio Expectations

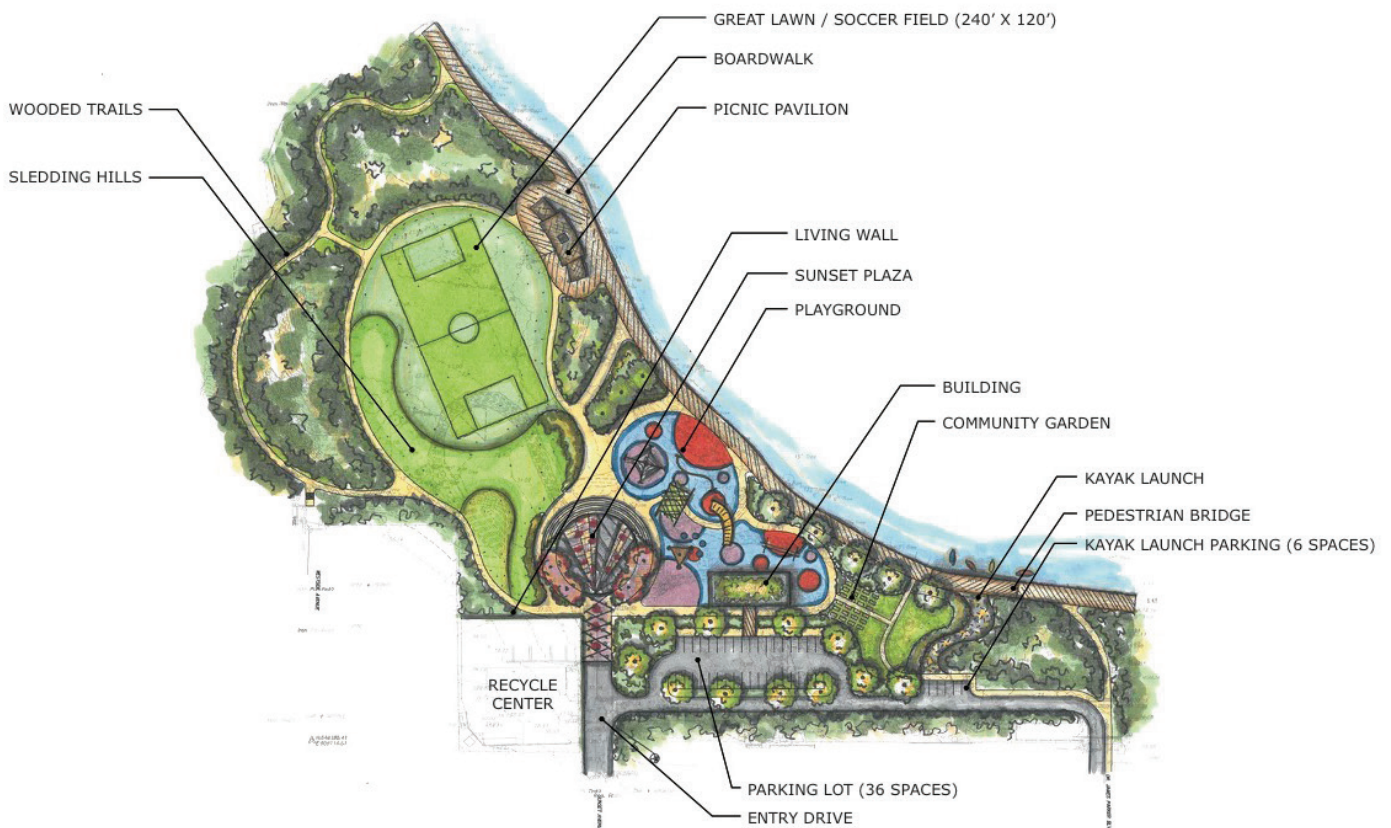
Much of your learning will occur through your active engagement in studio—both during class and while working at your studio desk during non-class time. The distinction between studio as a class and studio as a space and as a community is quickly blurred as you get focused on projects and rely on your peers for perspective and support. You are expected to engage in all activities, including site visits, drawing exercises, projects, pinups, and project reviews. You are expected to contribute to the studio's learning process through conversations and critiques during and outside studio time.

Contact

It is important that all students are given the same updates and information. Most of this will occur during class lectures, but the instructor will also rely on email and announcements to students. You are expected to check your email regularly regarding postings made to Canvas for specific assignments.

Attendance

The Department of Landscape Architecture requires attendance in all of its classes. The individual student's development as a landscape architect is largely dependent upon two aspects of education. First is the exposure to and assimilation of a body of information which relates to the field. Second is the application of this knowledge through studio projects and problem-solving skills developed through critiques, reviews and interactions during each project.



September 2023

Sunday	Monday	Tuesday	Wednesday	Thursday	Friday	Saturday
					1	2
3	4 Labor Day	5 Introduction LECTURE: The Cities We Need	6	7 Red Bank Site Visit / Tour	8	9
WEEK 1						
10 Grandparents Day	11 Patriot Day	12 DUE: Ex.A. Studio Analysis	13	14 Red Bank Site Mapping & Analysis	15	16 Rosh Hashanah
WEEK 2						
17 Constitution Day	18	19 Due: Site Plan #1	20	21 DUE: Ex.B. Precedent Studies LECTURE: A Brief History of Urbanism	22	23 Autumnal equinox
WEEK 3						
24	25 Yom Kippur	26 LECTURE: Access to Healthy Environments	27	28 Grounds for Sculpture Visit / Sketch Day	29	30
WEEK 4						

October 2023

Sunday	Monday	Tuesday	Wednesday	Thursday	Friday	Saturday
1	2	3 Due: GFS Sketch / Collage Inspo MODEL STUDY 1	4	5 Due: Site Plan #2 LECTURE: Land Tenure	6	7
WEEK 5						
8	9 Columbus Day	10 MODEL STUDY 2	11	12 DUE: City Perspective LECTURE: Green Systems	13	14
WEEK 6						
15	16 Boss's Day	17	18	19 MIDTERM REVIEW	20	21 Sweetest Day
WEEK 7						
22	23	24 United Nations Day DUE: Ex.C. Programming Precedent Studies	25	26 DUE: Updated Site Plan (Not Rendered) LECTURE: Housing Typologies & Design	27 ASLA Minneapolis	28
WEEK 8						
29	30	31 Halloween Work Day LECTURE: Multifamily Housing				
WEEK 9						

November 2023

Sunday	Monday	Tuesday	Wednesday	Thursday	Friday	Saturday
WEEK 9			1	2 DUE: Ex.D. Community Program Plan	3	4
5 Daylight Saving WEEK 10	6	7 Makerspace Work Day	8	9 DUE : Initial Enlarged Site Plan & Section MODEL STUDY 3	10	11 Veterans Day
12 WEEK 11	13	14 Work Day	15	16 DUE: Design Development Drawing MODEL STUDY 4	17	18
19 WEEK 12	20	21 DUE: Detail Drawing	22	23 Thanksgiving	24	25
26 WEEK 13	27	28 Work Day	29	30 DUE: Context Diagram		

December 2023

Sunday	Monday	Tuesday	Wednesday	Thursday	Friday	Saturday
					1	2
3 WEEK 14	4	5 DUE: Final Boards Layout / Mockup	6	7 Pearl Harbor Hanukkah begins DUE: 75% complete drawings	8	9
10 WEEK 15	11	12 LAST CLASS FINAL REVIEW	13	14	15 DUE: BOOKLET	16
17 WEEK 16	18	19	20	21	22 Dec. Solstice	23
24 Christmas Eve	25 Christmas Day	26 Kwanzaa begins	27	28	29	30

Advanced Landscape Architecture

Rutgers, The State University of New Jersey
Landscape Architecture 11: 550:431
5 credits

Fall 2023

Tuesday (studio) 2:00 - 5:00
Thursday (lecture) 12:10 - 1:30
Thursday (studio) 2:00 - 5:00

Instructor: Anita Bakshi
ab1332@sebs.rutgers.edu
anita-bakshi.squarespace.com



Course Grading:

Analysis	5%	Design Development	25%
Exercise A – Studio Analysis	2.5 %	Enlarged Site Plan & Section Group	5 %
Exercise B – Precedent Study	2.5 %	Model Study 3	5%
		Design Development Drawing (Ind.)	5%
Design Concepts & Plans	30%	Model Study 4	5%
Site Plan #1	2.5%	Detail Drawing	5%
Site Plan #	2.5%		
Model Study 1	5%	Final Design	27.5%
Model Study 2	5%	Context Diagram (Group)	2.5 %
City Perspectives	5%	Final Boards Layout / Mockup (Group)	2.5 %
MIDTERM	10%	75% Complete Drawings (Individual)	2.5 %
		Final Design Development (Individual)	12.5 %
Community Programs	12.5%	Final Booklet	7.5%
Programming Precedent Study	2.5 %		
Community Program Plan	10 %		